

Archaeological Risk Protocol

James Eogan MIAI, Senior Archaeologist

What is Archaeological Risk?

The risk of encountering previously unidentified archaeologically significant remains during the construction phase of a project.

Why Manage Archaeological Risk?

The unexpected discovery of archaeological remains during a project's construction phase impacts negatively on:



➤ programme



➤ budget

Why Manage Archaeological Risk?

And has the potential to lead to:



*An Roinn
Ealaíon, Oidhreacht agus Gaeltachta*
*Department of
Arts, Heritage and the Gaeltacht*



- regulatory involvement
- negative publicity & protest

Why Manage Archaeological Risk?

- It also has the potential to create uncertainty and erode trust among project partners, statutory bodies, funding agencies, contractors and the public
- This can have consequential implications for future projects

Why Manage Archaeological Risk?

- This principle applies regardless of the scale of the scheme
- The impact of a significant archaeological discovery on a minor or safety scheme can be disproportionate



How Does the NRA Manage Archaeological Risk?

- In-house professional expertise
- ‘Cradle to grave’ approach
- Standardised processes
- Risk protocol
- Close working relationship with the design team

How Does the NRA Manage Archaeological Risk?

- On-going liaison with statutory authorities
- Public dissemination of the results of archaeological work

How Does the NRA Manage Archaeological Risk?

In-house expertise

- The NRA Archaeology Section currently has 13 full-time staff based in Dublin and NRDOs
- Generally NRA Archaeologists are assigned to projects based on their NRDO location. However, the section does advise on projects where there is no locally-based NRA Archaeologist.

How Does the NRA Manage Archaeological Risk?

'Cradle to Grave' approach

- Archaeological implications of / for scheme assessed from preliminary design onwards
- Common approach adopted regardless of scale of project
- Cost-effective assessment methodologies deployed where appropriate e.g. geophysics

Archaeological Assessment



How Does the NRA Manage Archaeological Risk?

Standardised Processes

- Suite of standardised contract documents developed in accordance with the CWMF
- Archaeology fully integrated into NRA-PMG
- Archaeological risk addressed in the standard forms of construction contract currently in use i.e. PPP, D & B

How Does the NRA Manage Archaeological Risk?

Risk protocol

- *Dealing with Archaeological Risk at Construction Stage*
- Developed in the context of the NRA funded Minor & Safety Improvement Schemes
- Schemes procured using i.e. PW-CF3 & PW-CF5 or constructed by direct labour

Risk Protocol

Archaeology Protocol v2- NRA funded Safety & Minor Improvement Schemes (October 2011)

Dealing with Archaeological Risk at Construction Stage-

NRA funded Minor & Safety Improvement Schemes

1. Introduction

This document provides an internal protocol for dealing with archaeological risk on minor and safety improvement schemes the construction of which is tendered and addresses the matter of how to deal with archaeological risk at construction stage on such schemes¹.

2. Background

Under PPP and D&B contracts there is an established mechanism for addressing any archaeological risk at Construction Stage that may remain following any Advance Works Archaeological Contracts. This involves transfer of risk to the Contractor and the process of dealing with archaeological discovery during construction is well laid out in the tender/contract process.

Under current forms of contract for minor schemes² there is no established detailed process for dealing with any residual archaeological risk at Construction Stage (other than its classification as a Delay and/or Compensation Event). This document addresses this.

3. Basic Principles on dealing with Archaeology on Minor & Safety Improvement Schemes

1. All designs should be assessed at the earliest possible stage by NRA Archaeologists so as to determine the level of archaeological risk and appropriate mitigation strategies required, if any. This should be carried out as part of the business appraisal process³;
2. If risk is deemed to warrant it, in order to remove/reduce risk to Construction Contracts in terms of delay and cost, it should always be the intention to carry out Advance Works archaeological mitigation before construction contracts go to tender/commence on the ground;
3. In all instances Archaeological Requirements should be detailed in an Appendix to the construction tender documents (see sample Appendix B);
4. The risk of dealing with archaeology encountered at construction stage is to be met by the Contractor, through either a Scheduled Delay and/or Compensation Event⁴ who must engage a Contractor's Archaeologist to carry out any required archaeological mitigation;
5. The 'Project Archaeologist' shall be the NRA Archaeologist (see Definitions in Appendix B to this document);
6. In all instances, irrespective of level of Advance Works Archaeological Contract, an Appendix of Archaeological Requirements must be included in the construction tender/contract documents to detail what happens in the event of discovery of archaeology (see Appendix B).

¹ Where schemes are being constructed by Direct Labour, archaeological requirements still apply-consultation with NRA Archaeologist shall be needed- see Appendix C

² PW-CFS - Public Works Contract for Civil Engineering Works designed by the Employer PW-CFS - Contract for Minor Building & Civil Engineering works designed by the Employer

³ Some schemes may require no Advance Works Archaeological investigation due to low potential for discovery- NRA Archaeologist to advise

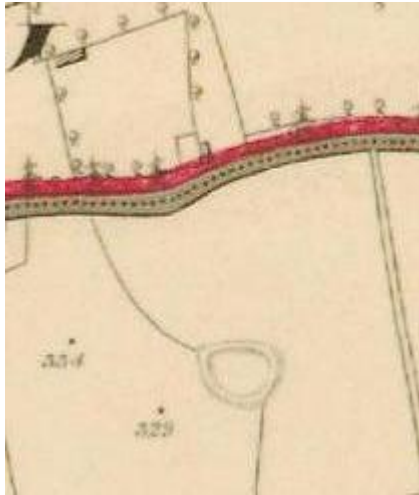
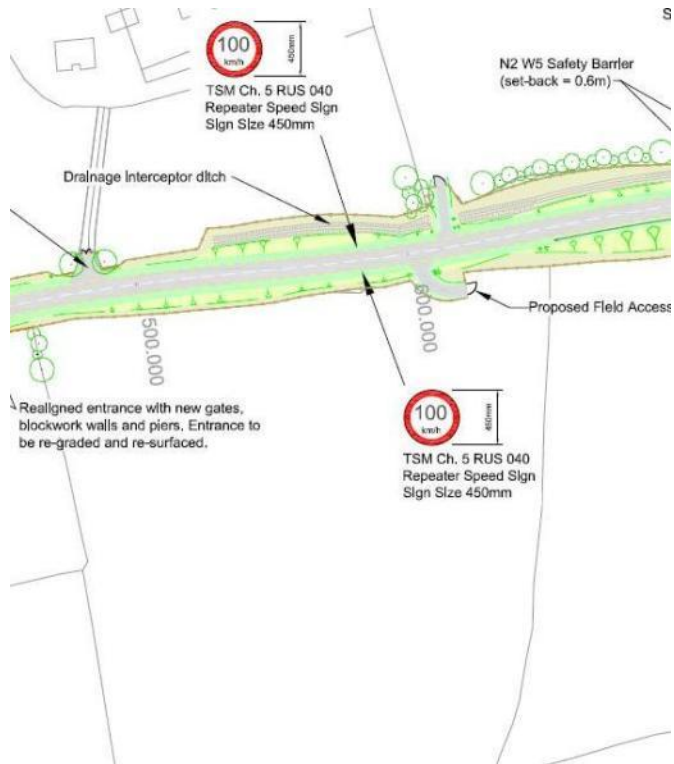
⁴ As of Sept 2011 Archaeology is classed as a Delay event only on PW-CFS contracts and as both a Delay & a Compensation Event on PW-CFS contracts

Available from
the NRA
Archaeology
Section

Risk Protocol

- To remove/reduce risk to construction contracts in terms of delay and cost, commission archaeological mitigation before construction contracts go to tender/commence on the ground
- Archaeological requirements must be detailed in an **Appendix** to the construction tender documents

Risk Protocol



Risk Protocol

- The risk of dealing with archaeology at construction stage is transferred to the **Contractor** (scheduled delay and/or compensation event)
- Where necessary the Contractor should be required to engage a **Contractor's Archaeologist**
- The **Project Archaeologist** shall be the NRA Archaeologist

Risk Protocol

Residual Risk

	Low	Medium	High
All lands assessed and mitigation complete	Green		
Lands assessed & mitigation on-going		Orange	
Client unable to assess all the lands, transfer to contractor			Red

Communicating information

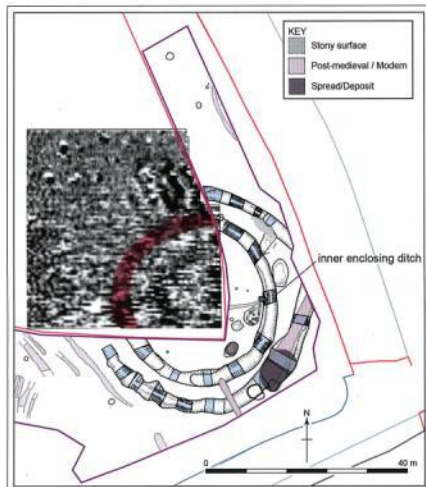
Public dissemination

- The NRA has an excellent record in disseminating the results of the archaeological work we commission
- This meets our statutory obligations; there are also good ‘corporate’ reasons
- Safety & minor schemes are no different

Communicating information

CUMANN SEANDÁLAÍOCHTA
IS STAIRE CHIARRAÍ

JOURNAL OF THE KERRY ARCHAEOLOGICAL AND HISTORICAL SOCIETY



Series 2, Vol. 12, 2012.

New Discoveries near Kilflynn, Co. Kerry

Patricia Long

Introduction

A proposed realignment of the N69 Tralee to Listowel road between the townlands of Rae and Tullig to the south-east of Kilflynn village (Figure 1) required that the area be examined for archaeological remains. Rubicon Heritage Services Ltd carried out archaeological test trenching of the route in two stages between August and October 2011, on behalf of Kerry County Council and the National Roads Authority. During these investigations, three small archaeological sites were identified and fully excavated in October 2011. Though not substantial in size, these sites provided interesting results and shed new light on Early Bronze Age and medieval activity in the vicinity of Kilflynn.

Prior to the investigations for the N69 realignment, the known archaeology in the immediate vicinity of Kilflynn was concentrated on the north side of the river Brick. Prehistoric occupation of the landscape

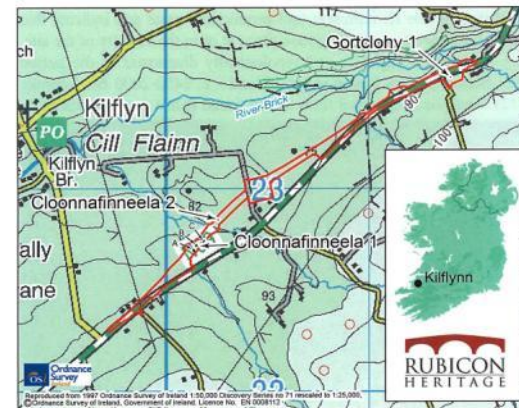


Figure 1. Location map.

Conclusions

- The NRA's Archaeological Risk Protocol sets out a simple process & methodology for assessing & mitigating archaeological risk in the context of safety and minor projects
- Its successful implementation is based on partnership between NRA Archaeologists, design engineers and local authorities

Some Archaeological Do's & Don'ts



➤ Don't be afraid of it ...



➤ Don't ignore it ...



➤ Do make contact with the NRA
Archaeology Section



➤ Don't leave it to the last minute ...

Thank you for your attention and safe journey home.

James Eogan



jeogan@nra.ie



www.nra.ie/archaeology/