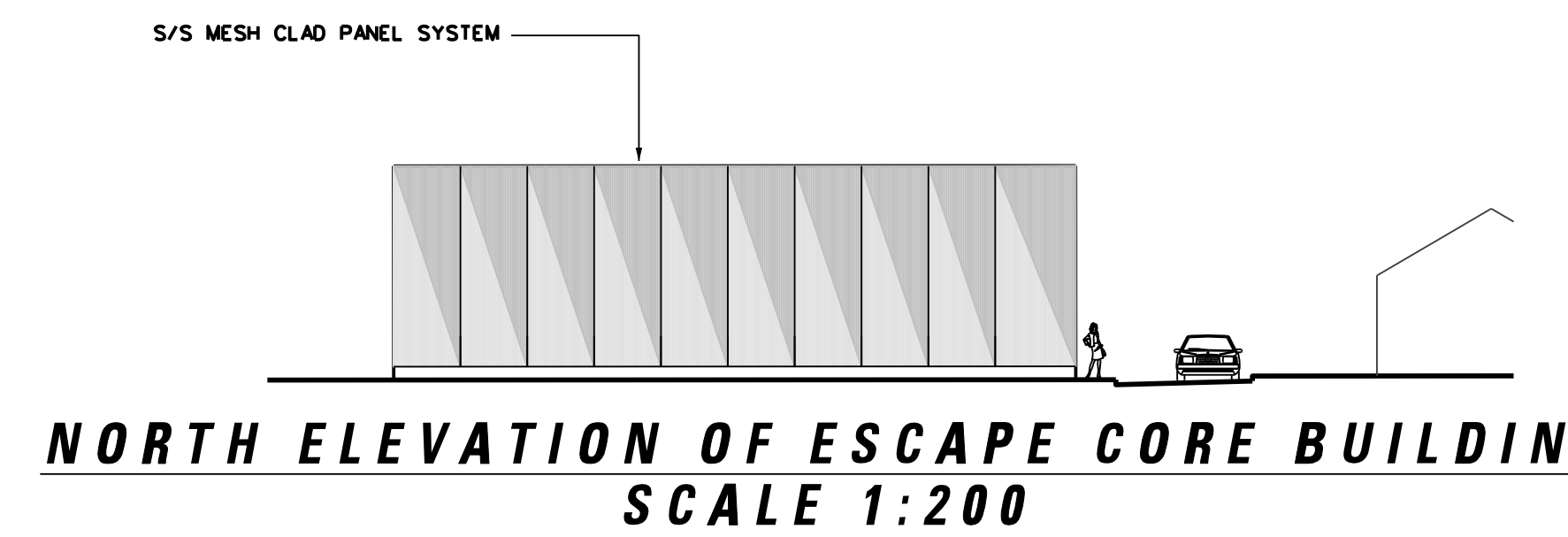
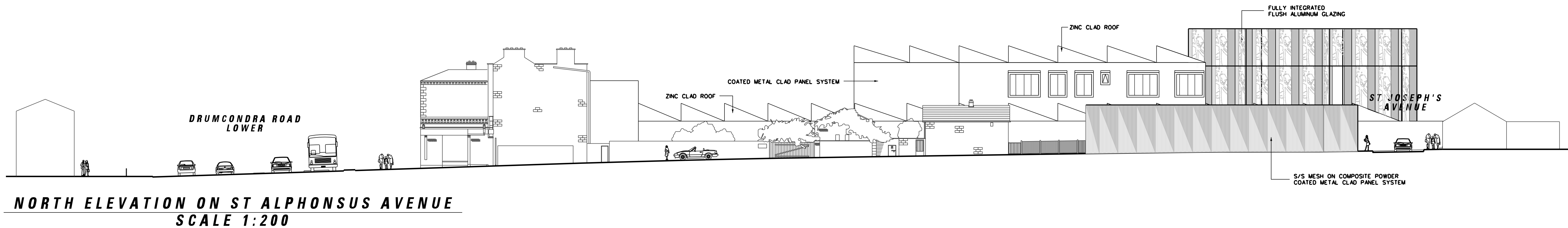




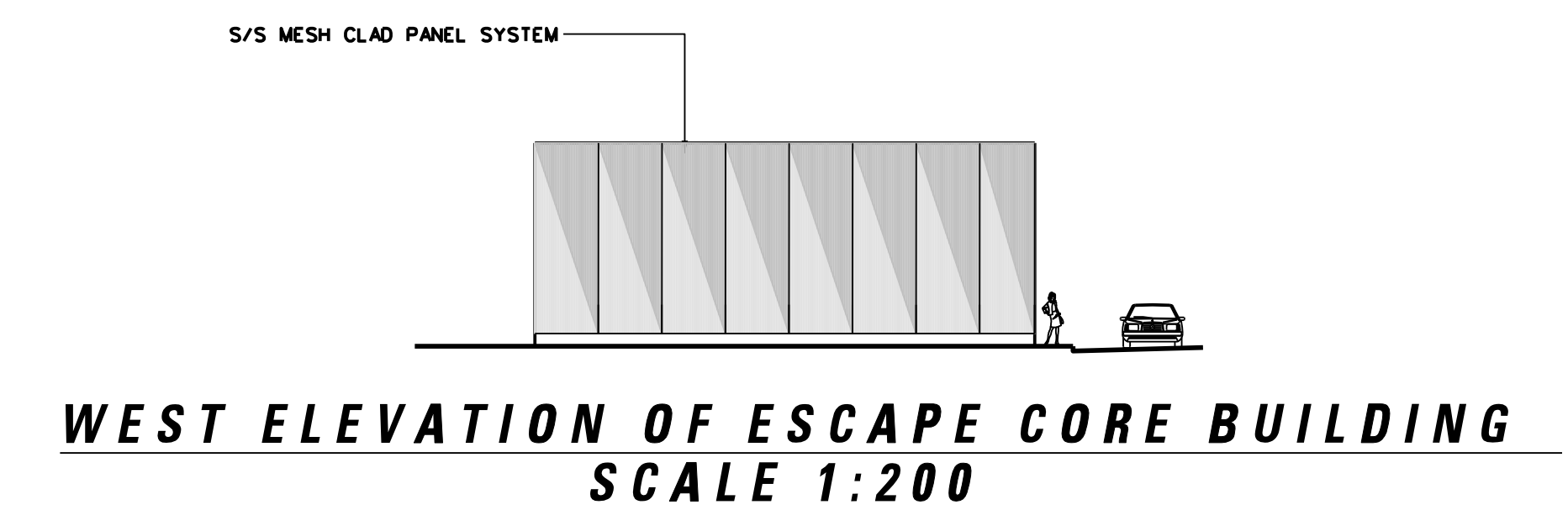
SOUTH ELEVATION ON ST ALPHONSUS AVENUE
SCALE 1:200



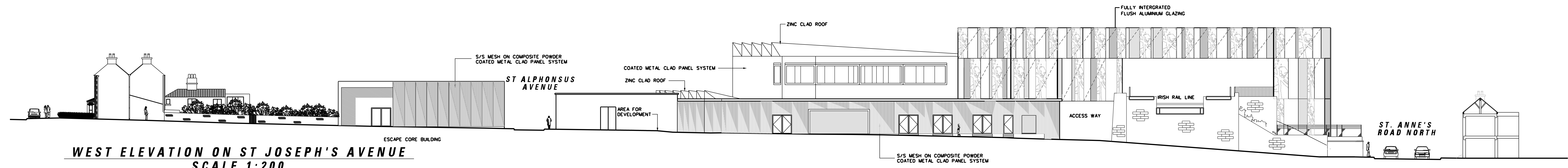
NORTH ELEVATION OF ESCAPE CORE BUILDING
SCALE 1:200



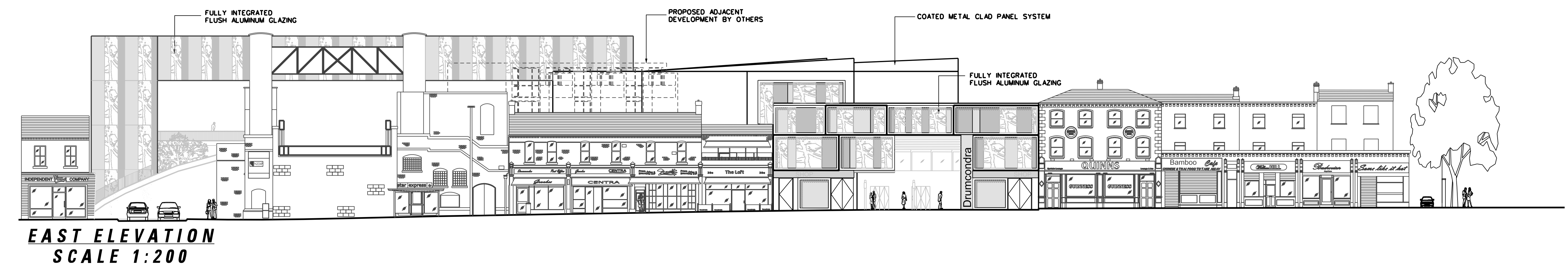
NORTH ELEVATION ON ST ALPHONSUS AVENUE
SCALE 1:200



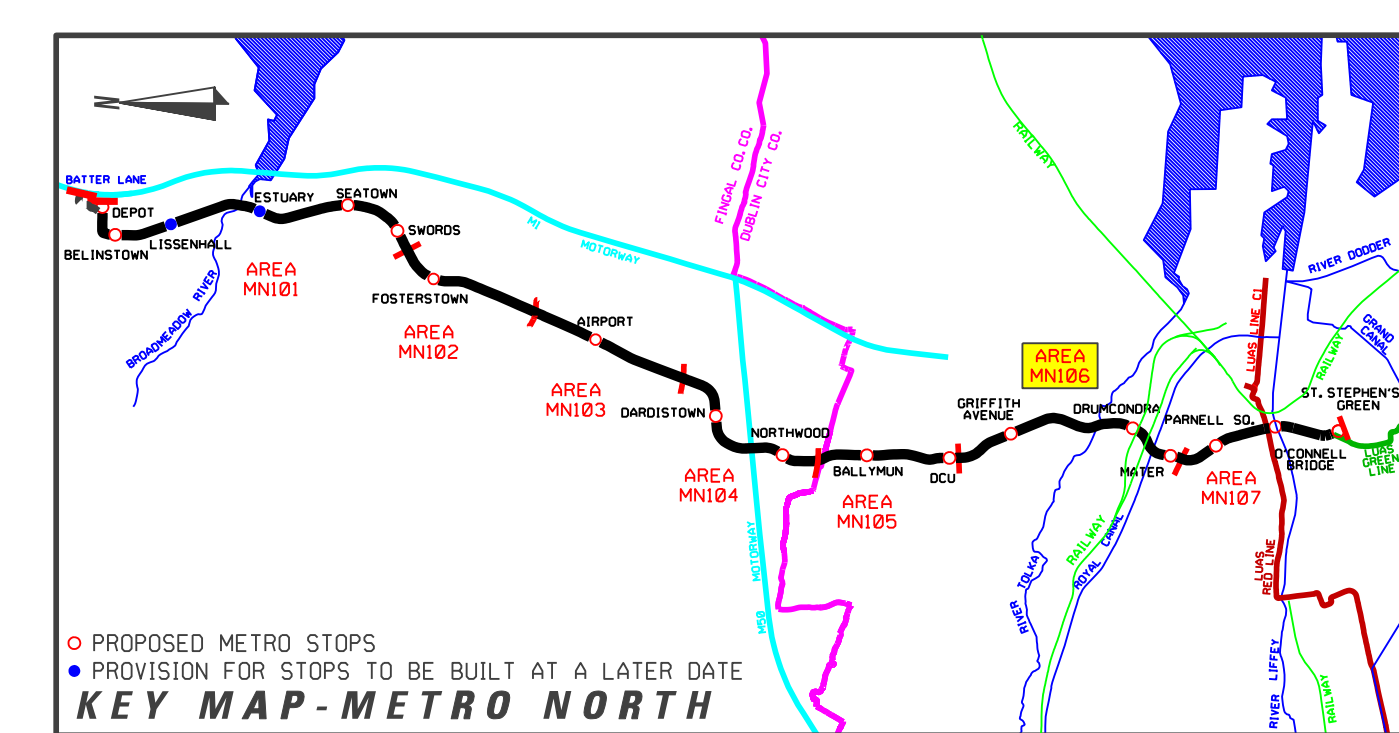
WEST ELEVATION OF ESCAPE CORE BUILDING
SCALE 1:200



WEST ELEVATION ON ST JOSEPH'S AVENUE
SCALE 1:200



EAST ELEVATION
SCALE 1:200



PROPOSED METRO STOPS
PROVISION FOR STOPS TO BE BUILT AT A LATER DATE
KEY MAP - METRO NORTH

REFERENCE RELATED DRAWINGS

FOR 1:500 PLAN DRAWING SEE RAIL ORDER PLAN No.
MN-RO 106 E-F(L/MN/000/GA/106006/A)

- AND ALSO SEE
- DRUMCONDRA STOP - SITE LOCATION PLAN
 - DRUMCONDRA STOP - IARNROD EIREANN TICKET HALL PLAN
 - DRUMCONDRA STOP - STREET LEVEL PLAN(ST. JOSEPH'S AVENUE)
 - DRUMCONDRA STOP - STREET LEVEL PLAN(DRUMCONDRA ROAD LOWER)
 - DRUMCONDRA STOP - CONCOURSE PLAN
 - DRUMCONDRA STOP - MEZZANINE AND PLATFORM PLANS
 - DRUMCONDRA STOP - SECTIONS A-A & B-B
 - DRUMCONDRA STOP - SECTIONS C-C & D-D

- MN-ST 106 E-F1(L/MN/000/TO/106008/A)
- MN-ST 106 E-F2(L/MN/000/TO/106009/A)
- MN-ST 106 E-F3(L/MN/000/TO/106010/A)
- MN-ST 106 E-F4(L/MN/000/TO/106011/A)
- MN-ST 106 E-F5(L/MN/000/TO/106012/A)
- MN-ST 106 E-F6(L/MN/000/TO/106013/A)
- MN-ST 106 E-F8(L/MN/000/TO/106015/A)
- MN-ST 106 E-F9(L/MN/000/TO/106016/A)

Copyright Railway Procurement Agency
This drawing is confidential and the copyright in it is owned by the RPA. This drawing must not be either issued, copied or otherwise reproduced in whole or in part or used for any purpose without the prior permission of the RPA.
All U.S. data used for plans is generated from U.S. digitized maps and was printed under Ordnance Survey permit no. 05-8817

INTERNAL DOCUMENT NUMBER	STAGE	LINE	CONTRACT	ELEMENT	DPW NO.	DPW REV.
	L	MN	000	TO	106014	A

REVISION	DATE	MODIFICATION	STATUS	CHECKED/APPROVED



RPA
Railway Procurement Agency



METRO
Railway Procurement Agency

RAILWAY WORKS
LINE MN - STRUCTURES
DRUMCONDRA STOP
ELEVATIONS

PREPARED: RPA OFFICE	CHECKED: GEOFFREY FEATHERSTONE
SCALE(S): 1:200	APPROVED: ROBY O'DONOR
DATE: AUGUST 2008	

AREA NO. 106	PLAN NO. MN-ST 106 E-F7	SUBJECT: RAIL ORDER
------------------------	-----------------------------------	-------------------------------