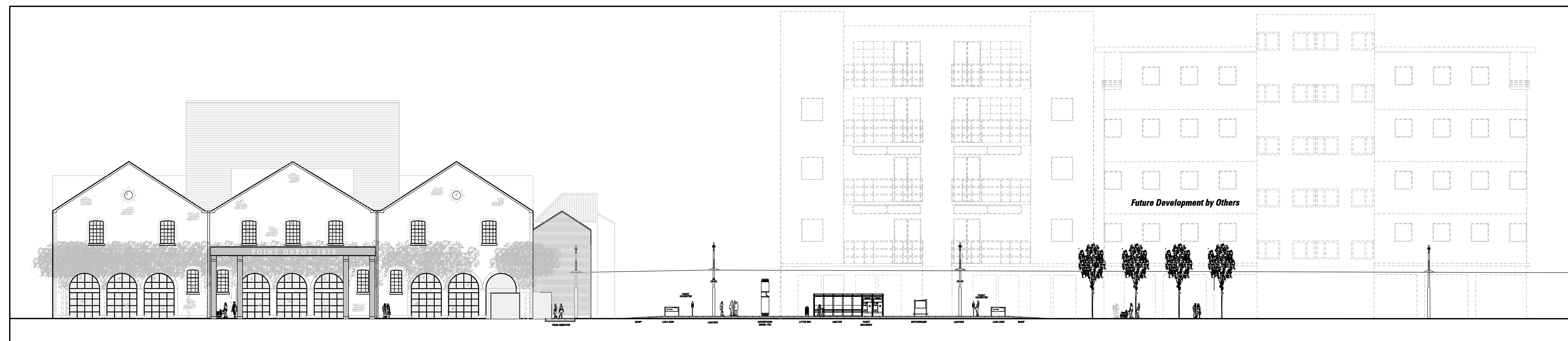


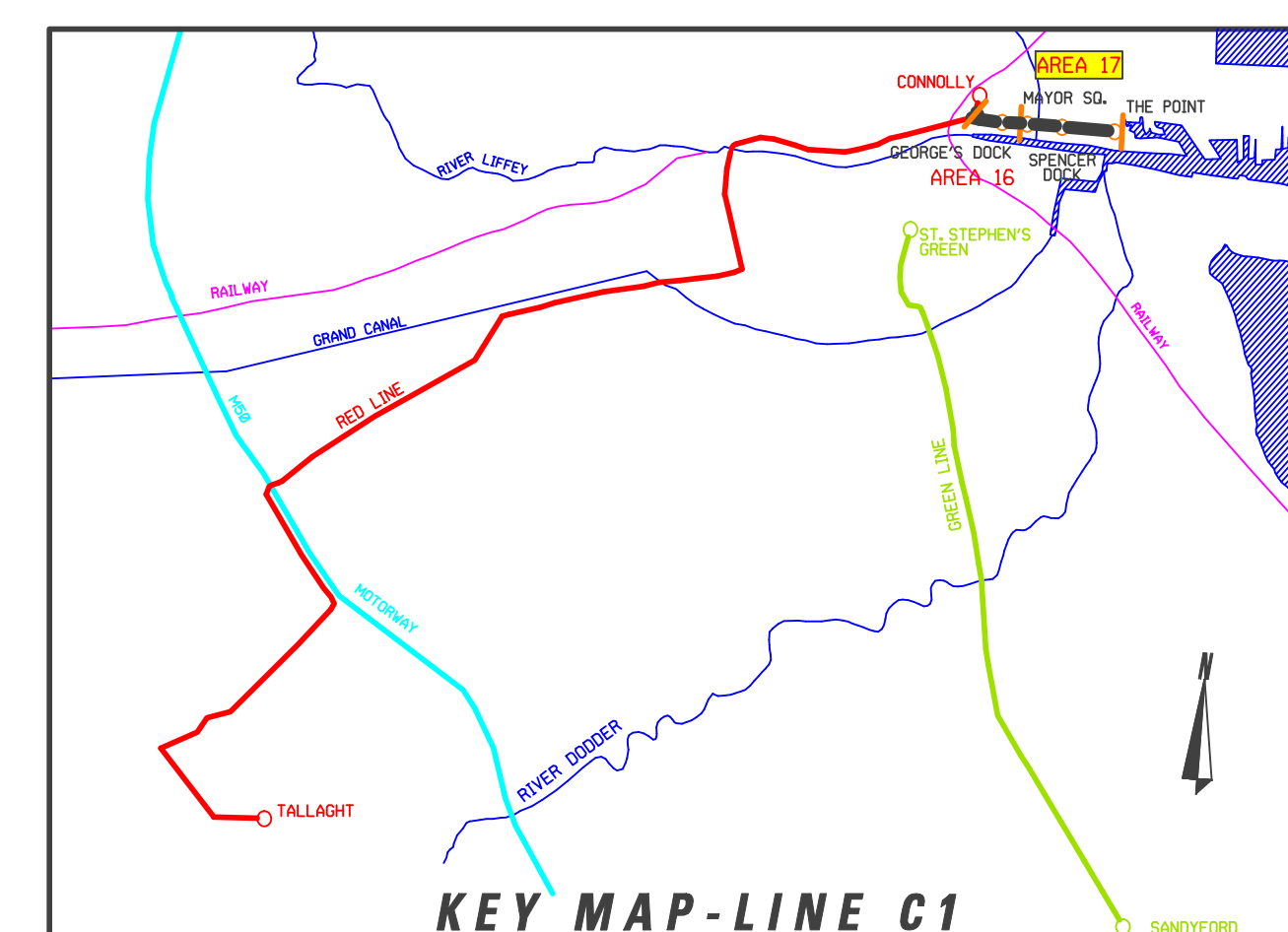
PLAN LAYOUT SCALE 1:100



SECTIONAL ELEVATION AA SCALE 1:200

NOTE:
FOR 1:500 PLAN DRAWING SEE RAIL ORDER
PLAN NO C1-RD 17 A-0 (L/C1000/GA17002A)

All O.S. data used for plans is generated from
O.S. digitalised maps and are printed under
Ordnance Survey permit no. O.S. 6417



LEGEND

	EXISTING TREE		IMPRINTED COLOURED CONCRETE (TRACK-BED)
	EXISTING TREE REMOVED		GRANITE COBBLES ROUGH HEWN (100 X 100 X 100mm) (TRACK-BED)
	NEW TREE		BUSH HAMMERED GRANITE COBBLES (100 X 100 X 100mm) (PEDESTRIAN COSSING)
	LOW LYING GROUND COVER		CORDUROY PAVING (400 X 400mm)
	GRANITE PAVING (400 X 400mm)		TRACK SHOULDER STRIP
	GRANITE BUSH HAMMERED PAVING (400 X 600mm)		EXISTING KERB REMOVED
	DESERT PAVING (200 X 200mm)		EXISTING BUILDING LINE
	ASPHALT ROAD SURFACE		STRUCTURES TO BE REMOVED
			SWEEP PATH EDGE
			SUPPORT CABLE FOR ELECTRIFIED CABLE ANCHORED TO BUILDING
			POLE SUPPORT
			DIRECTION OF TRAFFIC FLOW

INTERNAL DOCUMENT NUMBER	STAGE	LINE	CONTRACT	ELEMENT	DRW NO.	DRW REV.
	L	C1	000	T0	17005	A

REVISION	DATE	MODIFICATION	STATUS	CHECKED/APPROVED
----------	------	--------------	--------	------------------

RPA Railway Procurement Agency

LUAS

Office: 100 Park Street, Dublin 8, Ireland. Phone: +353 1 468 3888. Fax: +353 1 468 3891. www.rpa.ie

LIGHT RAILWAY WORKS
LINE C1 - STRUCTURES
THE POINT STOP - SHEET 1 OF 2

PREPARED: RPA OFFICE	CHECKED: JIM QUINLAN
SCALE: 1:200 1:100	APPROVED: PAT O'DONOGHUE
DATE: OCTOBER 2005	

AREA NO. 17	PLAN NO. C1-ST 17 A-01	SUBJECT: RAIL ORDER
--------------------	-------------------------------	----------------------------