

© Copyright 2007 - 2011 Railway Procurement Agency. All rights reserved. Any information provided herein by RPA shall be treated as private and confidential. This drawing must not be loaned, altered, copied or otherwise reproduced in whole or in part or used for any purpose without the prior written permission of the RPA. All OS data used for plans are printed under Ordnance Survey No. OS 6417.

Note: map must be read in conjunction with the Material Assets: Archaeology, Architectural and Cultural Heritage chapter of the EIS (Chapter 23)

- Proposed Metro North Dardistown Depot
 - Granted Metro North Alignment
 - Proposed Metro West Alignment
 - Study Area
 - Park & Ride
 - Waterbody
 - Townland Boundary (outside study area)
-
- | Boundary | Site | Baseline Rating |
|----------|------|-----------------|
| — | — | Very Low (VL) |
| — | — | Low (L) |
| — | — | Medium (M) |
| — | — | High (H) |
| — | — | Very High (VH) |

METRO

Chernivcecht
Uile Fhailéiread
Párlaiminteach
Dúlaire, Éirinn
Ri. Nu. 252 1 562 3420
Fón Nu. 252 1 562 3420
www.rpa.ie

PREPARED: CTL REVIEWED: FS APPROVED: GF
 CHECKED: MCH DATE: April 2011
 SCALE: 1:10,000

LOCATION: Dardistown

SPECIALIST TOPIC: **Material Assets: Architectural and Cultural Heritage Baseline**

AREA NO. PLAN NO. SUBJECT: EIS

Sheet 1 of 1

Fig. 17: Archaeological Heritage Baseline map for Metro North Depot.

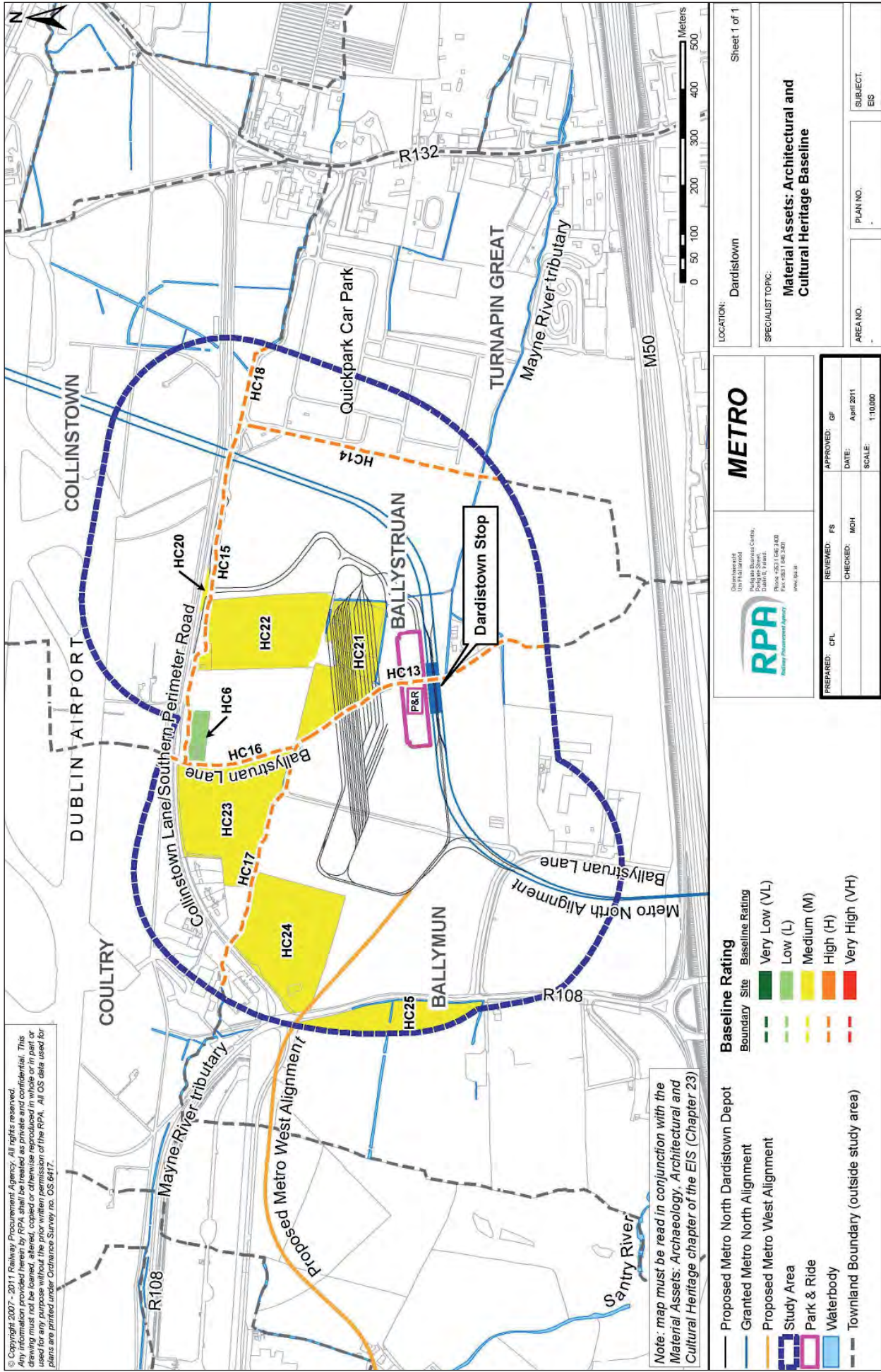


Fig. 18: Architectural and Cultural Heritage baseline map for Metro North Depot.



Fig. 19: Metro West geotechnical trial pit and borehole locations.

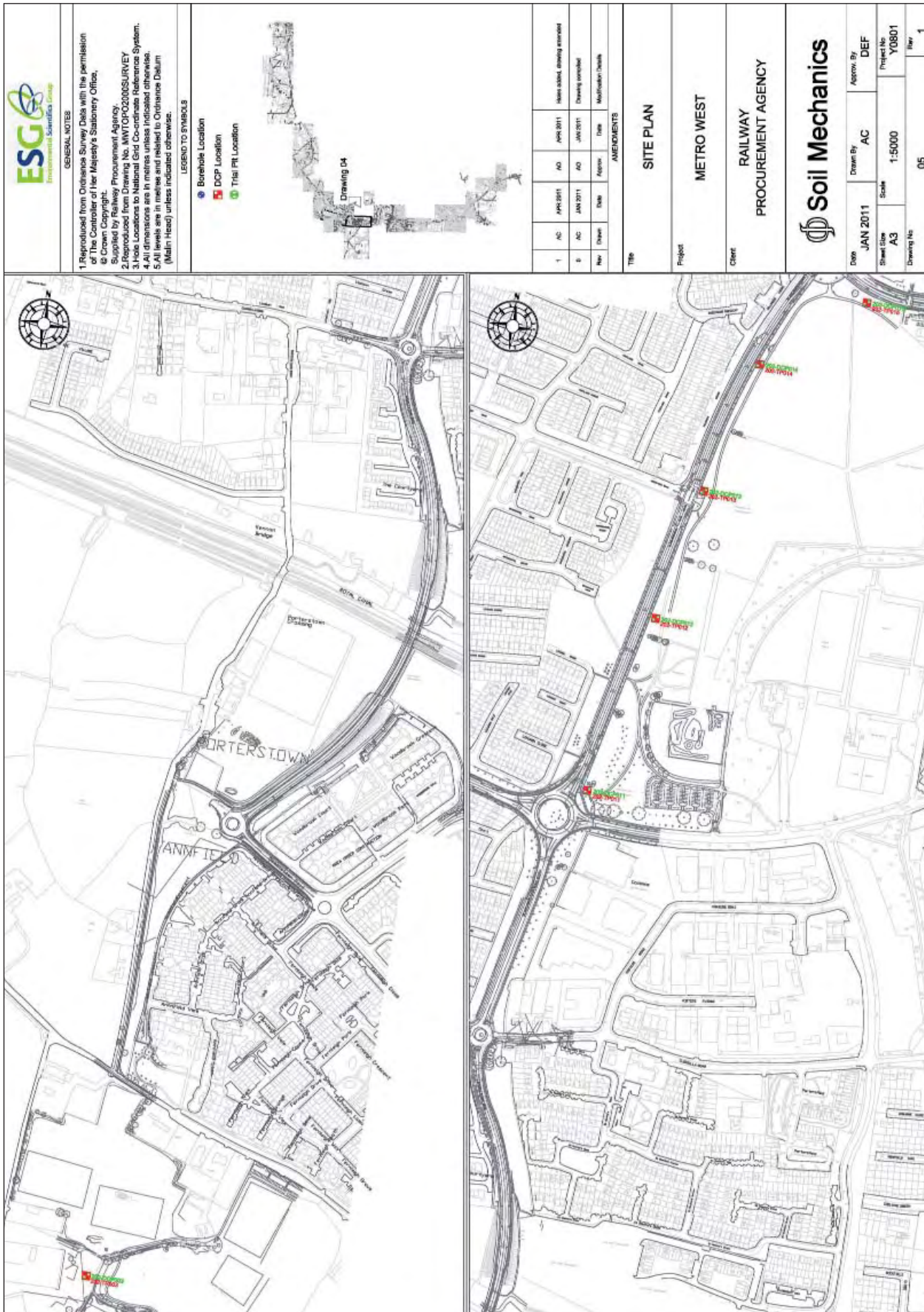


Fig. 20: Metro West geotechnical trial pit and borehole locations.



Fig. 21: Metro West geotechnical trial pit and borehole locations.

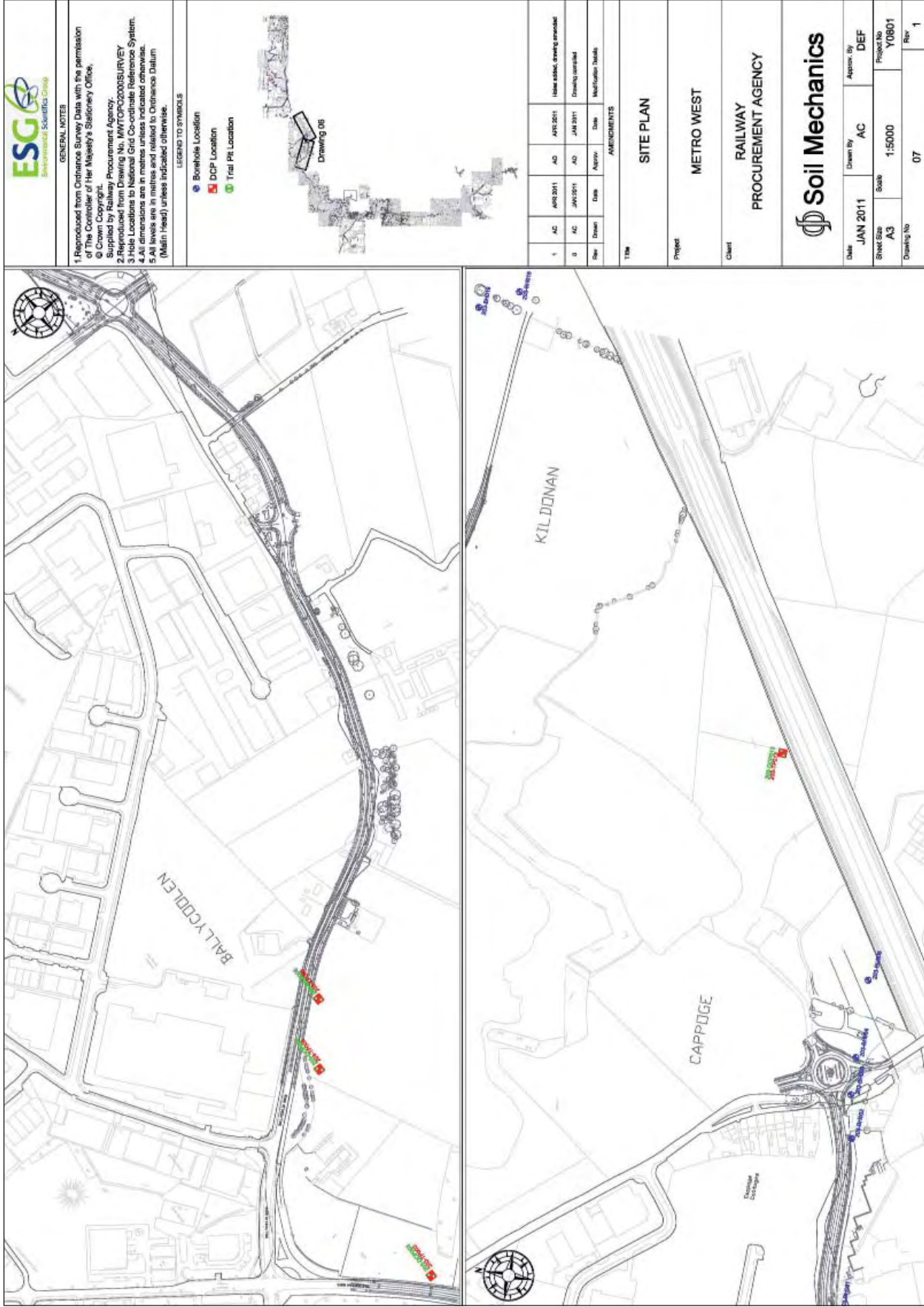


Fig. 22: Metro West geotechnical trial pit and borehole locations.

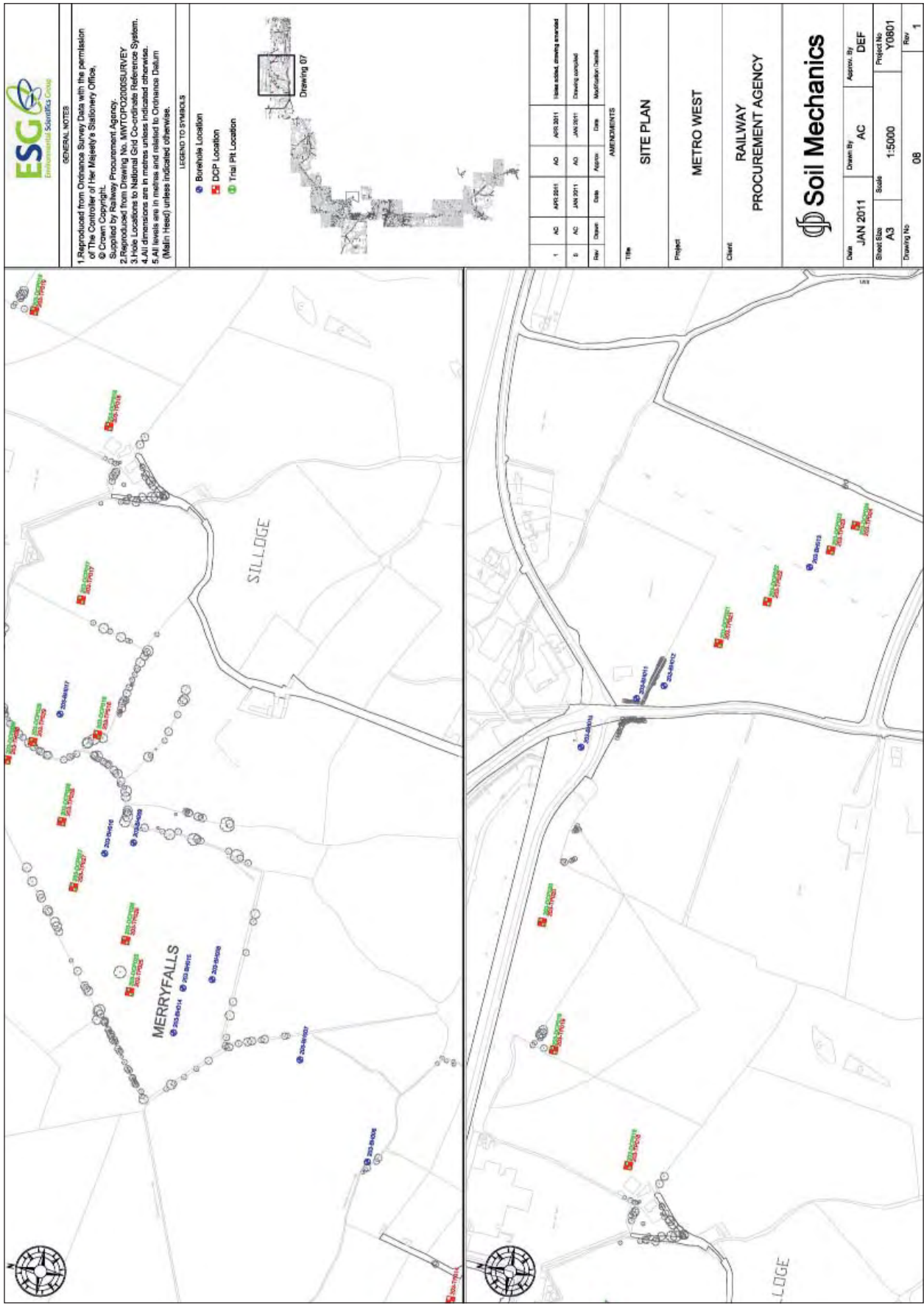


Fig. 23: Metro West geotechnical trial pit and borehole locations.

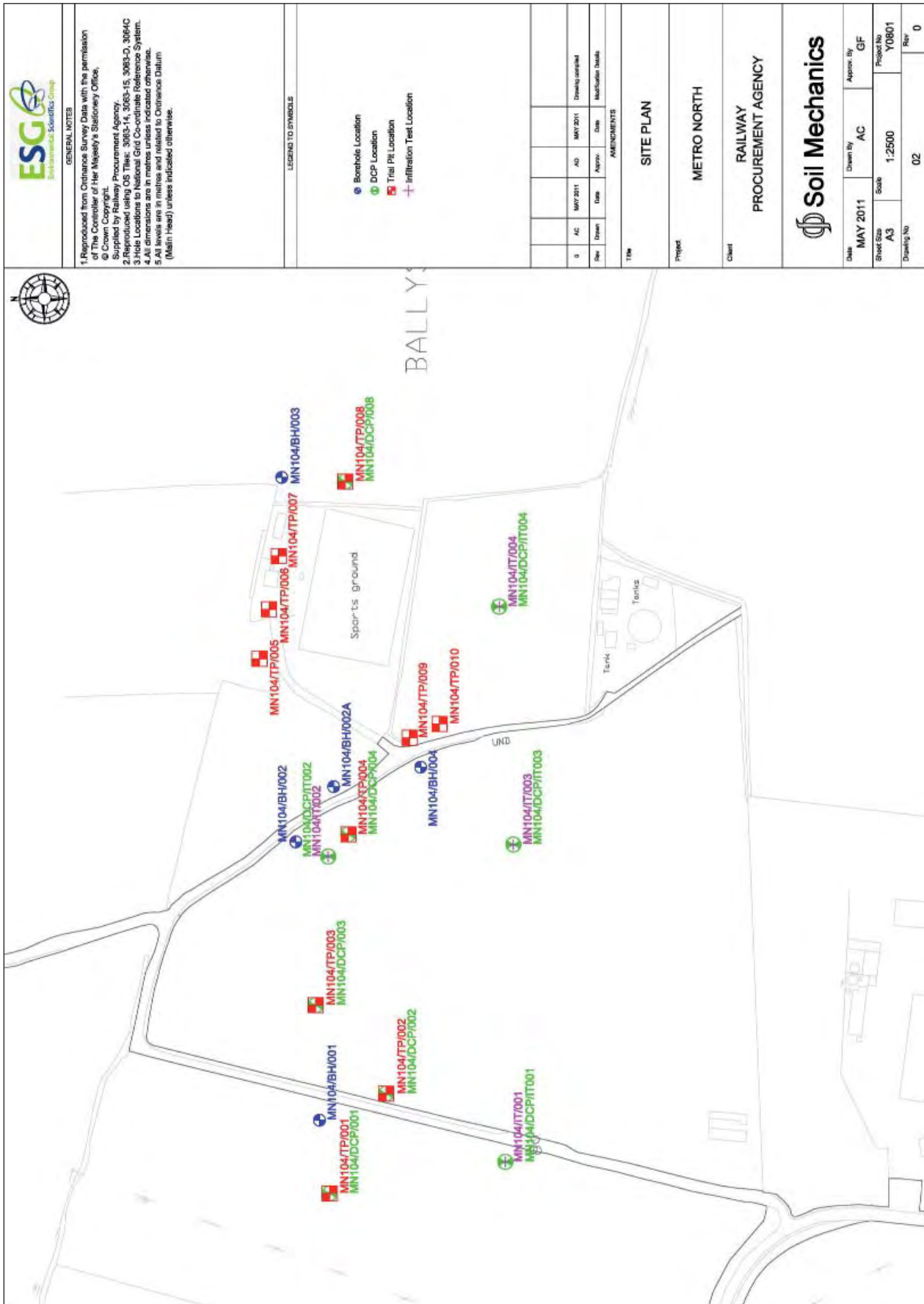


Fig. 24: Metro North Dardinstown Depot geotechnical trial pit and borehole locations.



Plate 1: MW/201/BH/010.



Plate 2: MW/201/TP/018.



Plate 3: MW/201/TP/016.



Plate 4: MW/202/TP/011.



Plate 5: MW/202/TP/012.



Plate 6: MW/202/TP/013.



Plate 7: MW/202/TP/014.



Plate 8: MW/202/TP/015.



Plate 9: MW/202/BH/010.



Plate 10: MW/202/BH/011.



Plate 11: MW/202/BH/012.



Plate 12: MW/202/BH/014.



Plate 13: MW202/TP/021.



Plate 14: MW/203/TP/003.



Plate 15: MW/203/BH/001.



Plate 16: MW/203/BH/005.



Plate 17: MW/203/BH/009.



Plate 18: MW/203/BH/014.



Plate 19: MW/203/BH/015.