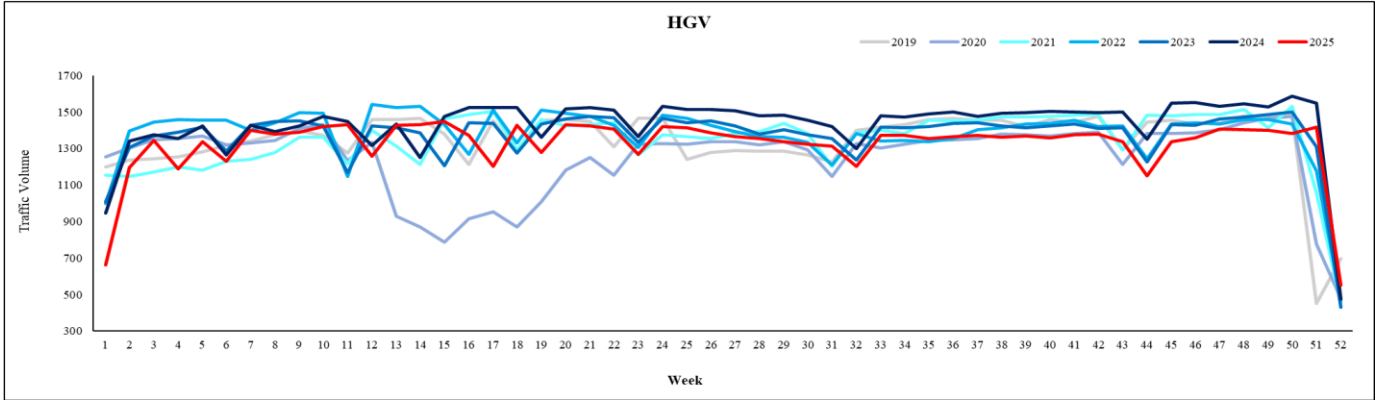
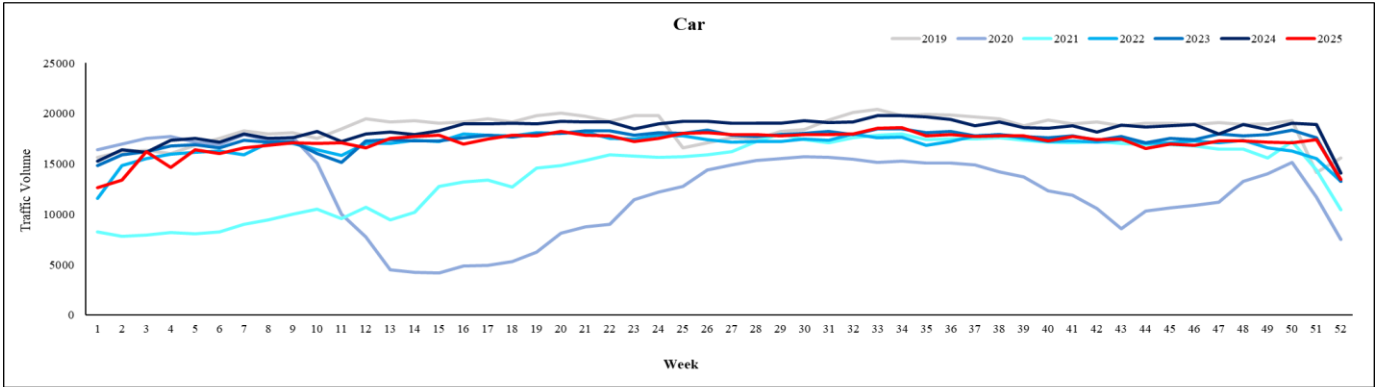
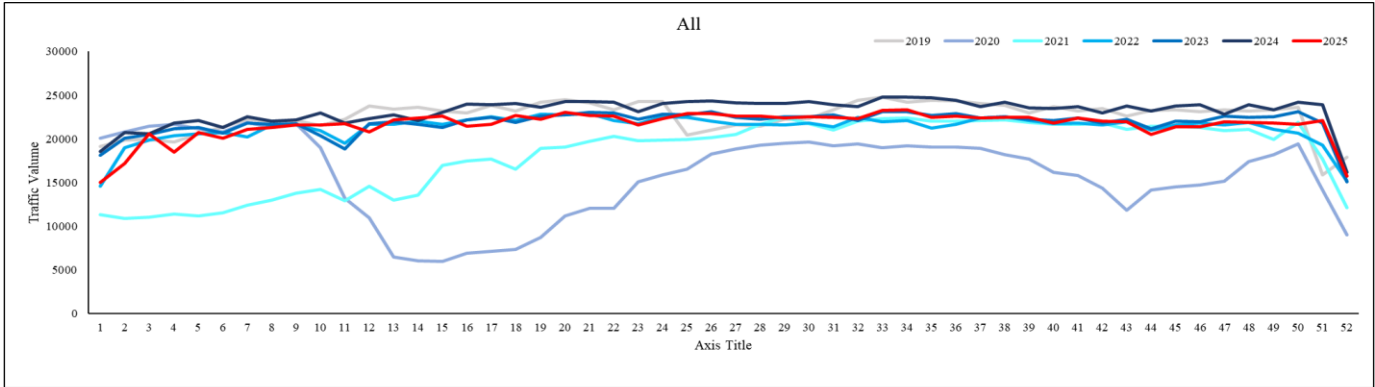


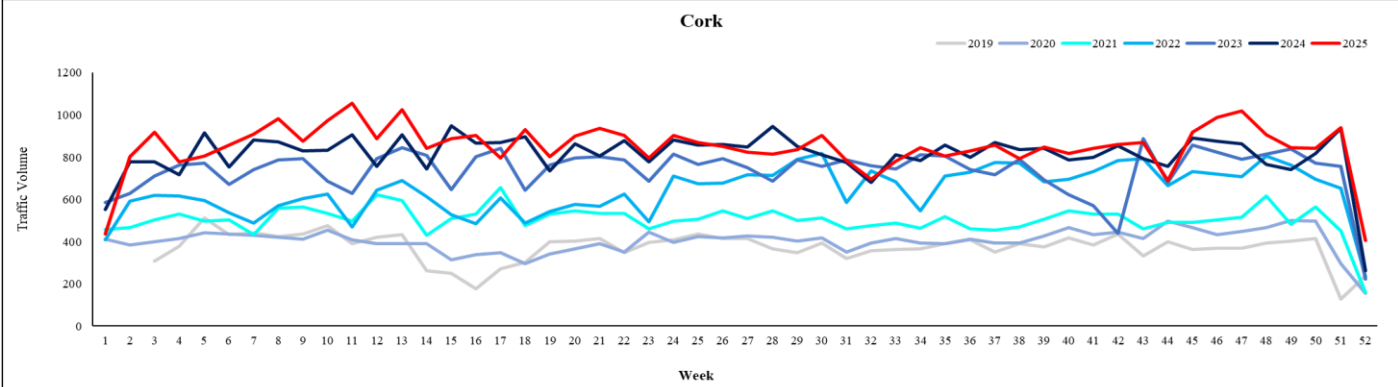
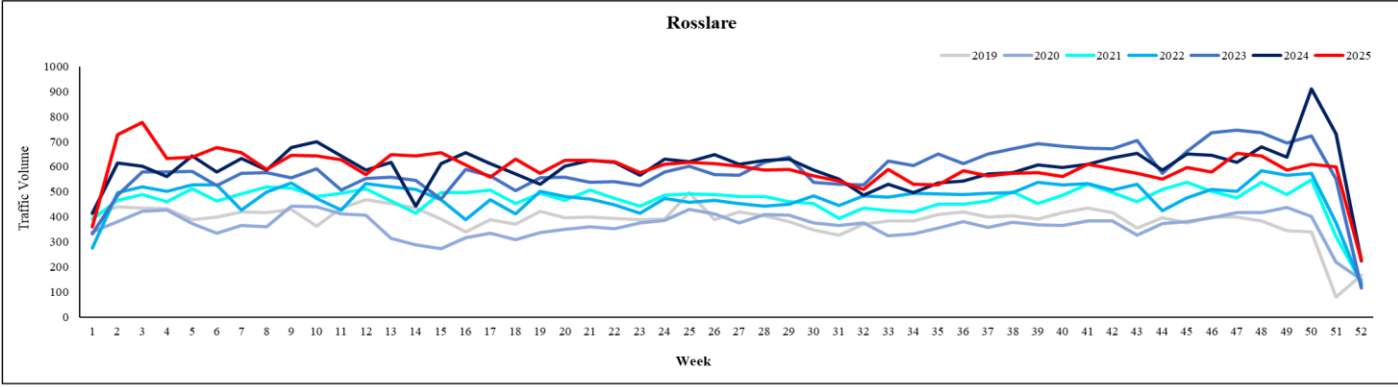
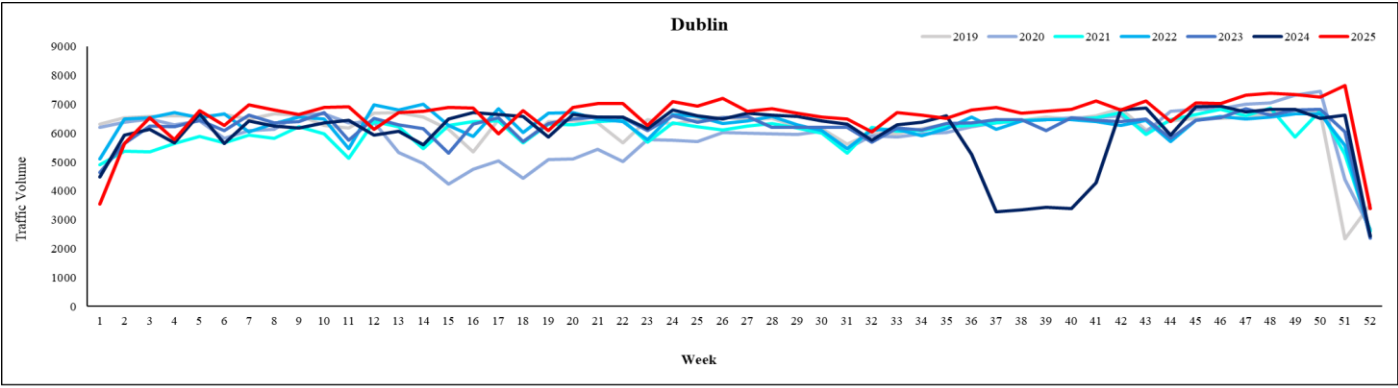
# Traffic Dashboard | Comparison 2019 to 2025



	Last week's average traffic volume						
	2025	% change in 2025 relative to					
		2019	2020	2021	2022	2023	2024
All	15,754	-12%	+75%	+30%	+4%	+4%	-3%
Car	13,474	-13%	+80%	+29%	+2%	+2%	-4%
HGV	552	-21%	+15%	+21%	+17%	+28%	+16%

- These graphs have been prepared using data (available at [trafficdata.tii.ie](https://trafficdata.tii.ie)) from all traffic counters installed on the national road network. The 'Traffic Volume' represents the sum of traffic volumes, from all counters, divided by the number of traffic counting sites.
- These graphs represent the average daily traffic volume per week for All traffic, Cars and HGVs (Articulated and Rigid) for years 2019-2025.
- Please note that several traffic counters lost traffic count data between June and August 2019. Consequently, the traffic counts for that period are likely to vary than what is shown on the graphs.
- Where data gaps occur at an individual site or multiple sites due to technical reasons or site activities, data may be estimated. If data is not estimated, the graphs may show a minor anomaly for the affected date or dates.

# HGV Port Dashboard | Comparison 2019 to 2025



	Last week's average daily traffic volume						
	2025	% change in 2025 relative to					
		2019	2020	2021	2022	2023	2024
Dublin	3,382	-4%	+27%	+30%	+39%	+43%	+39%
Rosslare	228	+35%	+52%	+63%	+77%	+94%	+1%
Cork	405	+71%	+162%	+154%	+72%	+81%	+54%

- These graphs have been prepared using data from the traffic counters at the ports in Dublin, Rosslare and Cork. The graphs represent the average daily traffic volume per week for articulated HGV traffic for the years 2019-2025.
- There was a -56% decrease in overall articulated HGV flow at the ports during the last week of 2025 compared to the previous week, which is associated with the Christmas/New Year period.
- At Dublin and Rosslare ports, the shares between inbound and outbound articulated-HGV traffic were 54% and 46% respectively.
- At Cork Port, the shares between inbound and outbound articulated-HGV flow was nearly equal.