



NRA TA85/13

Guidance on Minor Improvements to National Roads

TA85

Guidance on Minor Improvements to National Roads

- What will be covered
 - Objective of the Preliminary Design Report
 - Where to use TA85
 - Contents of the Design Report
 - Worked Examples
 - Approval Procedure

Objective

- Address and present issues relating to compliance with relevant parts of the NRA DMRB.
- Ensure that the standards to be applied are acceptable and all proposed RELAXATIONS & DEPARTURES are identified.
- The designer already has most of the information required for the preparation of a Preliminary Design Report.

Where to Use TA85

- Minor Improvement Schemes < 2km in length
 - Changes in Horizontal or Vertical Alignment
 - Application of Superelevation
 - Change in Road Cross Section
 - New Junctions
- Road Safety Improvement Scheme specifically targets sections of the network with high collision rates to improve road safety
 - sightline improvements at junctions and accesses
 - sightline improvements on sub-standard horizontal curves

Contents of the Preliminary Design Report

- The need for the proposed scheme
 - safety and/or capacity issues
 - existing pavement condition
 - existing horizontal/ vertical alignment elements
 - existing cross-section
- Specific objectives of the proposed scheme
- Collision History and Records
- Design Speed Calculations



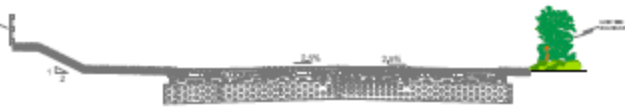
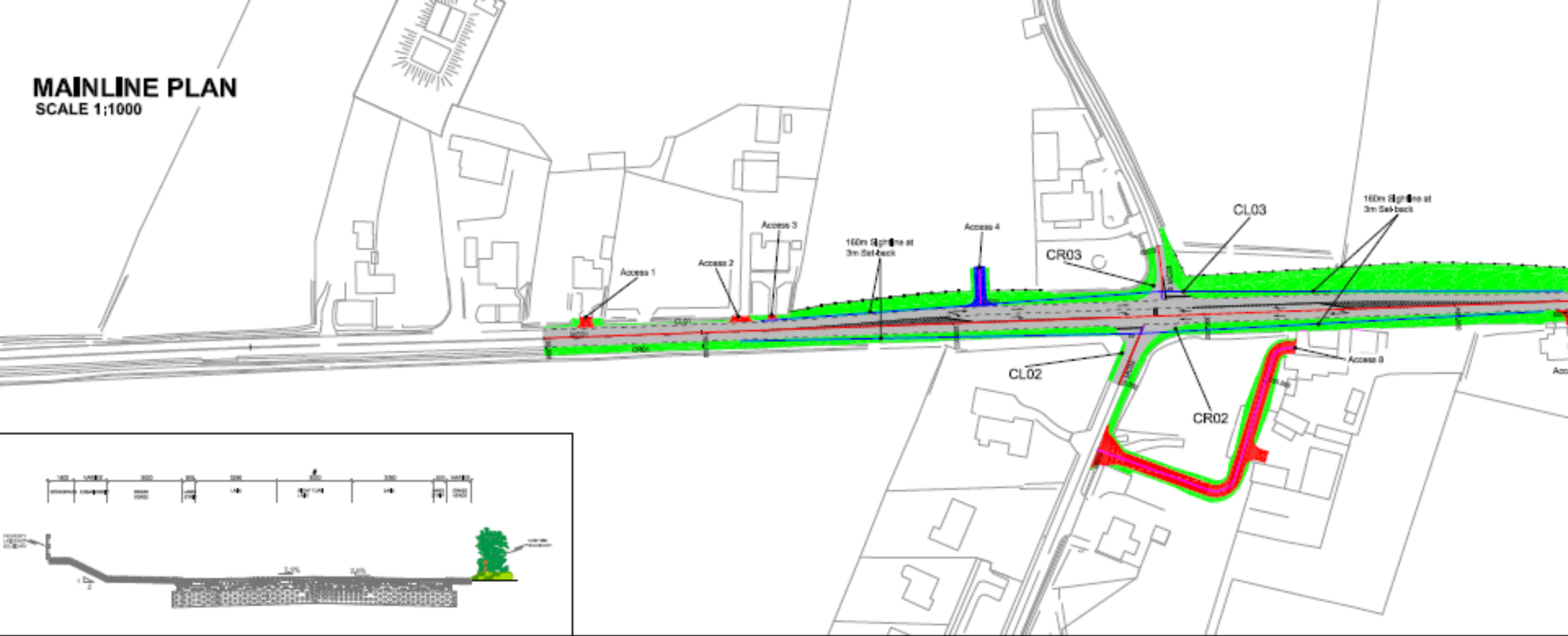
Contents of the Preliminary Design Report

- Options considered
- Constraints (Environmental or Topographical)
- Geometric features
 - Existing and Proposed
 - Horizontal and Vertical Alignment (including gradients)
 - Cross Section (including superelevation and flat spots)
 - Stopping Sight Distance
 - Junction Visibility
- A Safety Barrier Risk

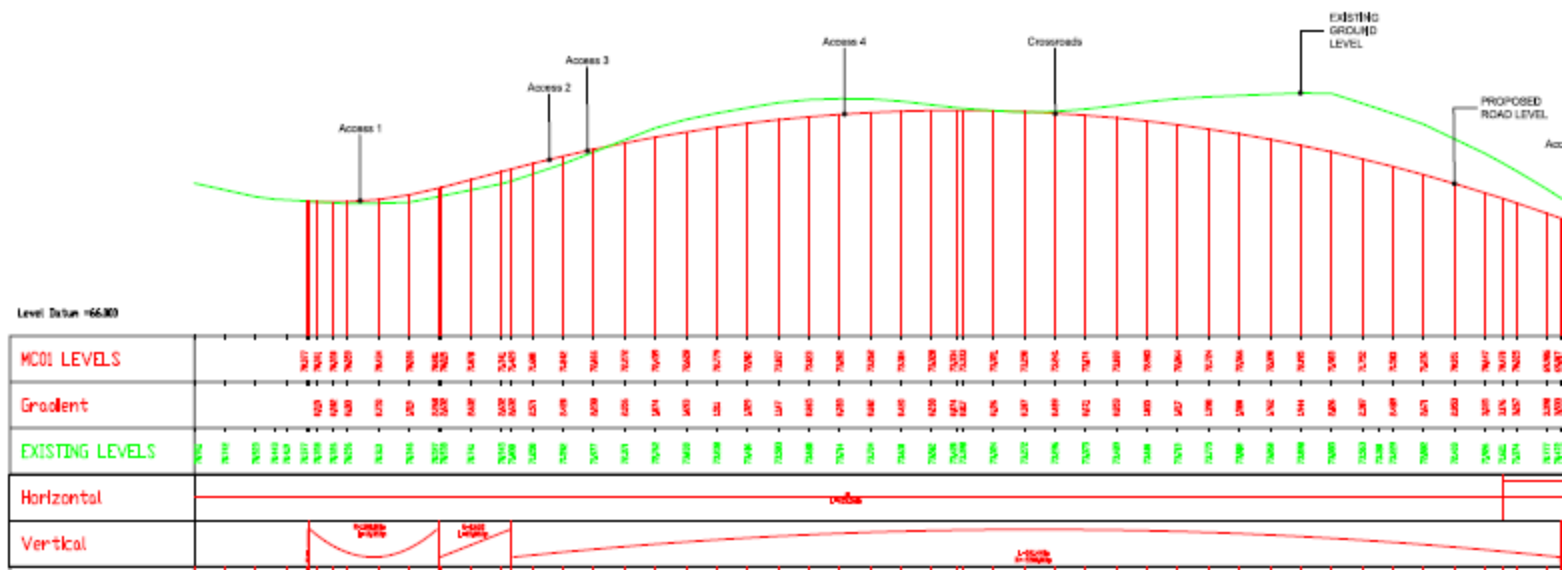
Contents of the Preliminary Design Report

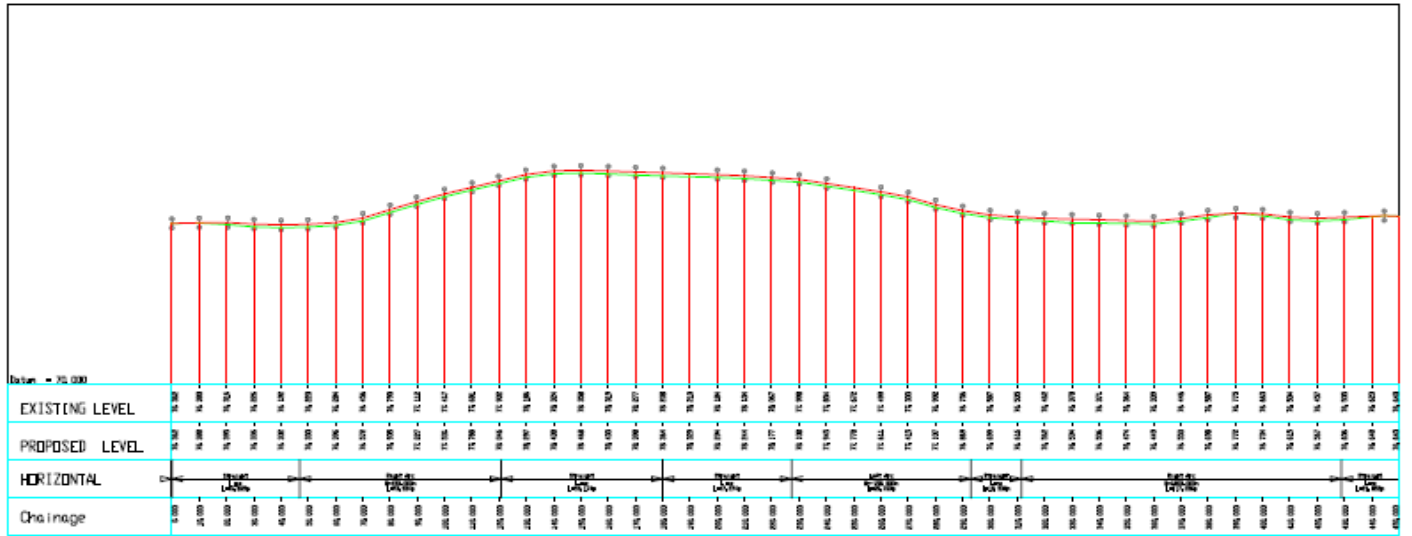
- Drainage requirements
- Traffic Signs and Road Marking requirements
- Junction treatment
- Requirements of Non-Motorised Users
- Relaxations and Departures
- Road Safety Audit (Stage 1&2 Combined)
- Preliminary Design drawings
- Table 2/1 A non-exhaustive list of data required

MAINLINE PLAN
SCALE 1:1000

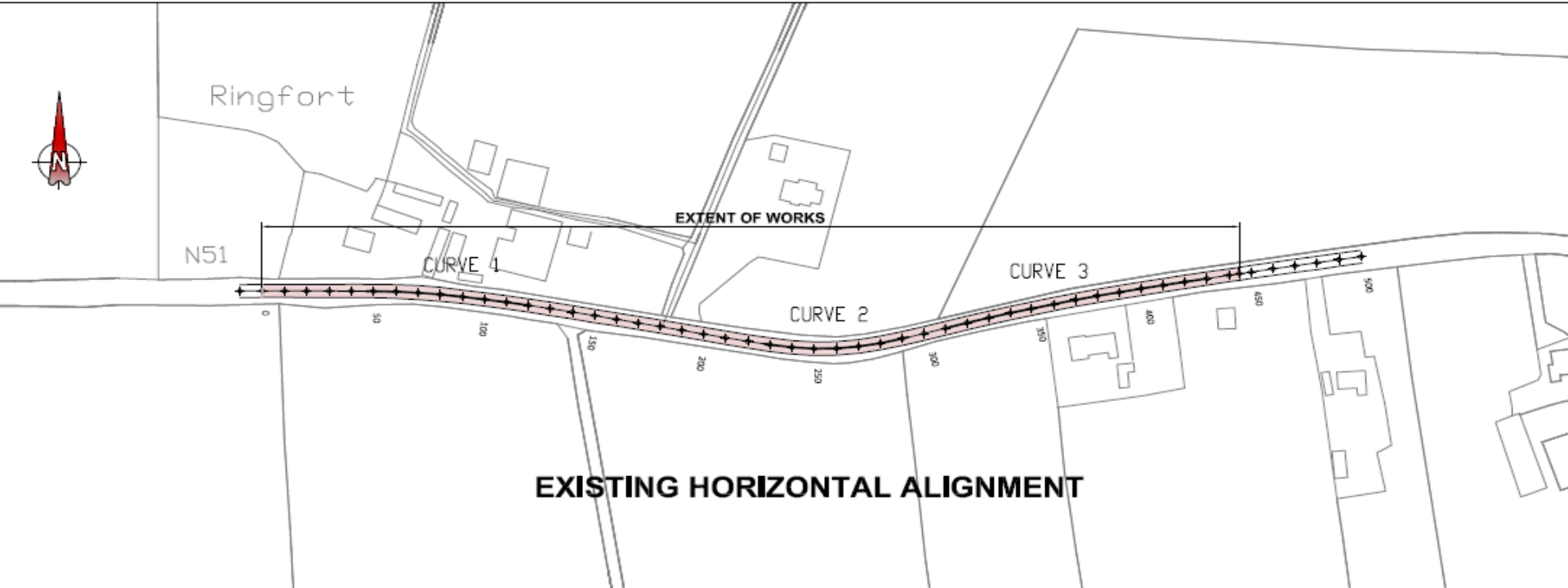


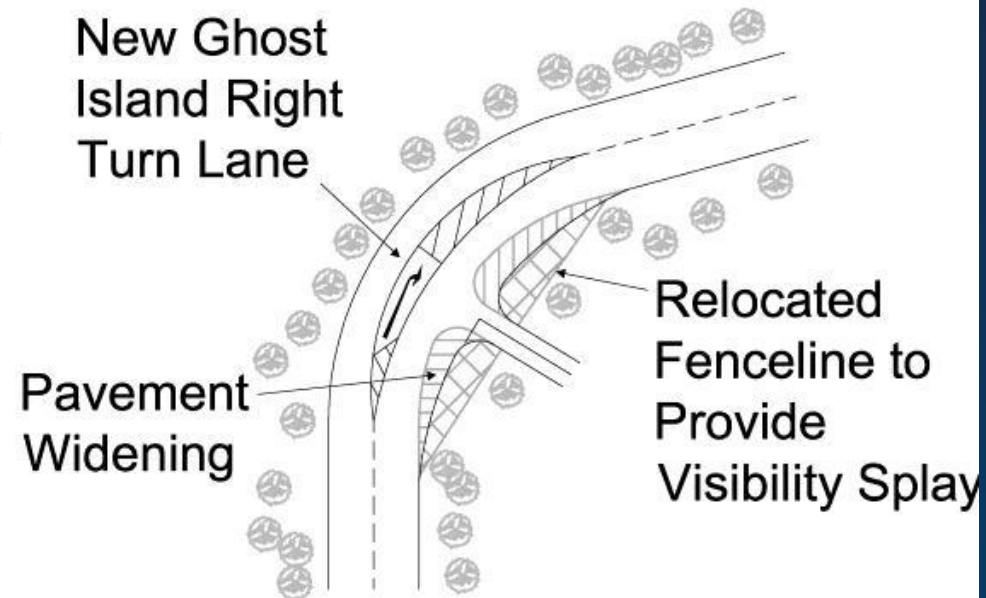
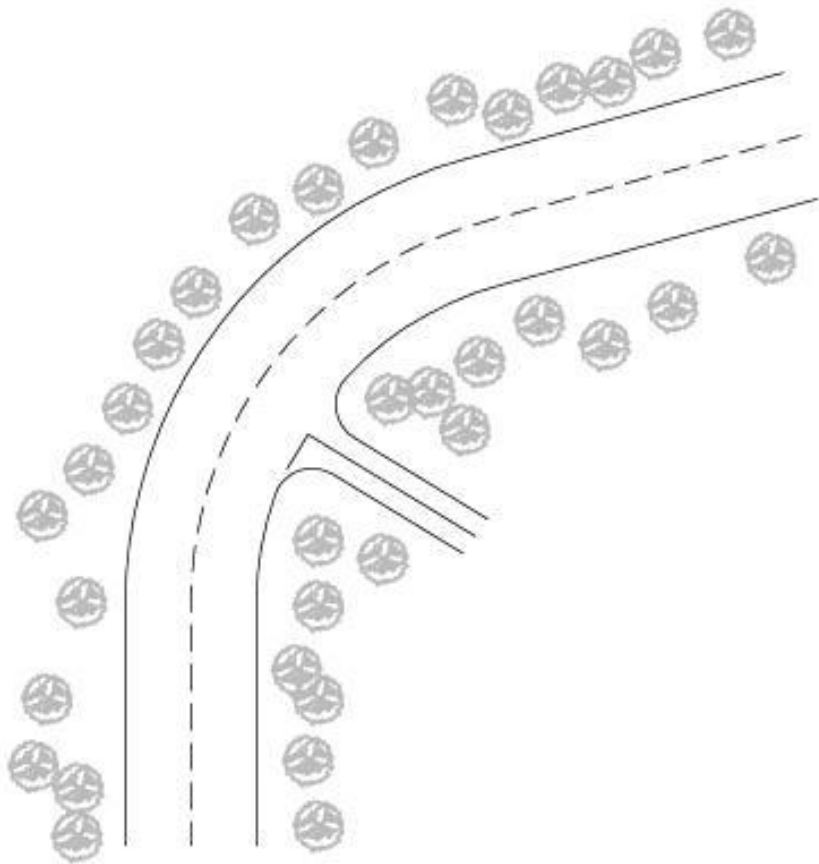
TYPICAL CROSS SECTION
SCALE 1:100





LONGITUDINAL SECTION CHAINAGE 0 TO 445 SCALES HORIZ 1 : 1000 _ VERT 1 : 100.





Road Safety Audit

- Stage 1&2 Combined in Accordance with HD19
- Must be attached to the PDR
- Common Issues
 - Stopping Sight Distance
 - Junction Visibility
 - Encroach on the visibility requirements of adjoining direct accesses or junctions
 - Stagger Distances

Relaxations and Departures

- Shall be recorded in the PDR
- 1 Departure Application will be submitted using the Web-based Departures Database
- This application should include the PDR with all the Departure Applications for the Project contained within it
- Should be submitted a minimum of two months prior to incorporation into the final design, and well in advance of the finalisation of the landtake

THANK YOU FOR YOUR ATTENTION

Name

Direct Line : +353 45 988922
Mobile : +353 87 2533720
E-Mail : bkennedy@kildarenrdo.com

