

2023 Grant Allocations to Local Authorities for National Roads, Active Travel and Greenways

PRS Budget Reference	DOT Budget Reference
B.1.1a	C3.1.2 Capital Investment - Protection & Renewal & Active Travel (AT)
B.1.1b	C3.3 Construction of New Roads
B.1.2	C3.1.1 Current Maintenance - Protection & Renewal
B.1.4	C3.4 PPP Payments
E7	A.4.1 Greenways

Preamble to the Allocations for National Roads and Greenways for 2023

Contents

Preamble to the Allocations for National Roads and Greenways for 2023	1
1. Introduction.....	4
1.1 National Roads Allocations and the NDP	4
1.2 The National Roads Portfolio	4
1.3 Statutory Arrangements for Allocations	5
1.4 Terms and Conditions Set by the Minister.....	5
1.5 Key Points.....	6
2. NDP Funding	7
2.1 Funding 2021-2030	7
2.2 Multi-annual Period 2021-2025	7
2.3 Multi-annual Period 2026-2030	8
3.0 NDP Priorities for National Roads.....	9
3.1 NDP Priorities	9
3.2 National Roads 2040, National Development and Climate Action	9
3.3 Summary of NDP Priorities for National Roads	11
4. The New Roads Programme	13
4.1 New Roads with Planning Approval: M28 Cork to Ringaskiddy.....	13
4.2 New Roads in the Planning Approval Process: N52 Ardee Bypass; N6 Galway City Ring Road; and N21/N69 Limerick Adare Foynes	14
4.3 N/M20 Limerick to Cork.....	17
4.4 TEN-T Route Improvement Donegal	18
4.5 New Roads in Planning Process - GDA Transport Strategy / Cork CMATS.....	18
4.6 New Roads in Planning Process - N11/N25 Oilgate to Rosslare (TEN-T Port Connectivity)	19
4.7 New Roads in Planning Process – Town Bypasses / Compact Growth / Town Centres First	19
4.8 New Roads in Planning Process – Safety Improvement	19
5. Protection and Renewal of National Roads	20
5.1 Overview of Protection and Renewal	20
5.2 Maintenance	20
5.3 Operations and Asset Management	20
5.4 National Secondary Roads	20
5.5 National Roads Active Travel	21
6. Greenways.....	22
6.1 Approving Authority.....	22
6.2 Greenways Strategy	22
6.3 Greenways Delivery	22

7. The Allocations for 2023	24
Appendix.....	25
2023 Allocations	28

1. Introduction

1.1 National Roads Allocations and the NDP

This preamble describes the matters considered for “The 2023 Grant Allocations to Local Authorities for National Roads, Active Travel and Greenways” (the “Allocations”). The Allocations are made by Transport Infrastructure (TII) having regard to the priorities set out in the National Development Plan 2021-2030 (the “NDP”), the objectives of the Climate Action Plan 2023, other national policies, and the terms and conditions set by the Minister for Transport (the “Minister”) pursuant to the Roads Acts 1993 to 2015.

TII is focussed on delivering its statutory duty to secure a safe and efficient network of national roads having regard to the needs of all users. TII is also responsible for overseeing the delivery of a programme of national and regional greenways, pursuant to an agreement between the Minister and the Board of TII.

TII has the function, under the Transport (Railway Infrastructure) Act 2001, to provide, or secure the provision, of light railway and metro infrastructure, on behalf of the National Transport Authority (NTA) or otherwise on behalf of the Minister. To that end, the NTA allocates capital funding to TII for the delivery of Luas projects and the MetroLink project. TII’s light railway and metro functions are not within the scope of coverage of this booklet.

The delivery of the national roads New Roads programme is important for TII’s stakeholders, especially the Local Authorities because it safeguards and improves the performance, reliability and safety of the overall network enabling the mobility of people and goods across the country. Generally, City and County Development Plans, which are statutory plans made by Local Authorities, have key strategic dependencies on the delivery of infrastructure, including national roads New Roads, and Protection and Renewal. For instance, in cities, towns and villages, the reallocation of road space for active travel and Town Centres First improvements, depends on the delivery of bypasses for national roads that currently traverse urban areas.

The Minister has notified TII that the Exchequer Capital Allocation for national roads for 2023 will be €254 million for Asset Protection and Renewal, and €237 million for New Roads. An Exchequer Current Allocation is being provided for national roads maintenance of €34.85 million. A separate Exchequer Capital Allocation is being provided for Greenways of €63 million. TII supplements Exchequer grants through income received from public tolling on the M50 and through revenue share arrangements from PPPs.

The indicative Exchequer Capital Allocation for New Roads in 2024, notified by the Minister to TII, is approximately €145 million.

The amount of the Exchequer Capital Allocation for any given year of the NDP is a key factor in determining the timing of delivery and rate of progress of national roads programmes and projects.

1.2 The National Roads Portfolio

The investment priorities for national roads flow from TII’s statutory duties pursuant to the Roads Acts 1993-2015, namely, to secure a safe and efficient network of national roads having regard to the needs of all users, the objectives of the NDP and CAP, and the terms and conditions set by the Minister in relation to the Exchequer Capital Allocations. National Roads 2040¹ describes TII’s

¹ [NR 2040](#)

portfolio of programmes, projects, and operations (including active travel), which is summarised in Figure 1.

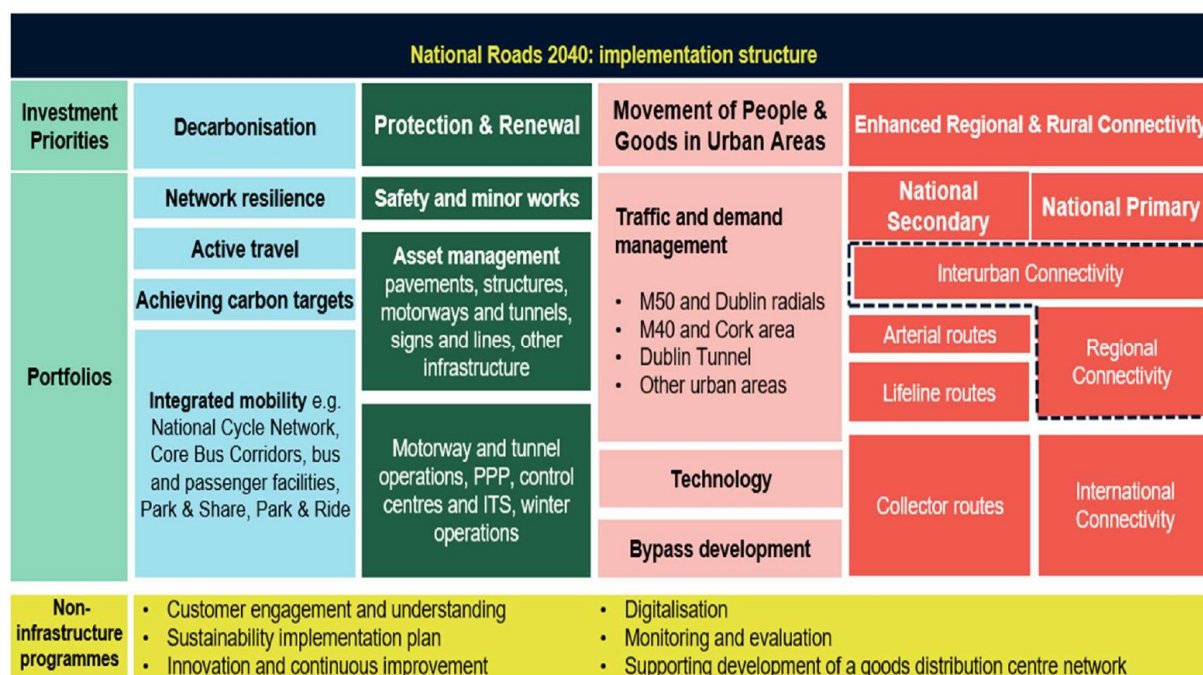


Figure 1 - The National Roads Portfolio

1.3 Statutory Arrangements for Allocations

Further to the general duty of TII to secure the provision of a safe and efficient network of national roads, Section 19 (2) of the Roads Act requires that TII shall, as far as possible, arrange that its functions (including prepare, or arrange for the preparation of, design for construction or improvement works or securing the carrying out of construction works) shall be performed on its behalf by the relevant road authority (i.e., the relevant Local Authority). Therefore, TII provides allocations to Local Authorities on an annual basis, so they can deliver on their road authority functions on behalf of TII in relation to national roads. If for any reason it is not possible to deliver on a particular project or for TII to approve the progression of a project, TII can, and does, reallocate part or all the relevant funding to other national roads programmes, projects, or operations, during the year in question.

Further to a request from the Minister, TII became the Approving Authority for Greenways as of 20 September 2021. The role of Approving Authority is an administrative arrangement specified in the Public Spending Code². The arrangements for delivery of greenways have been incorporated into TII's suite of programme delivery documentation for national roads, so that the systems for delivery of national roads and greenways projects are aligned.

1.4 Terms and Conditions Set by the Minister

The Minister set terms and conditions in relation to the Exchequer Capital Allocations for national roads for 2023, as summarised in this section.

The Exchequer Capital Allocation for New Roads projects is based on the following prioritisation:

² [The Public Spending Code](#) Department of Public Expenditure and Reform, December 2019.

1. Maintenance of existing national road assets, helping to keep them to a safe and robust standard;
2. Progression of projects currently under construction and those close to construction;
3. Progression of the major projects at pre-Decision Gate 2 in the Public Spending Code;
4. For projects further back in the development pipeline, i.e., pre-Decision Gate 1 in the Code, the focus of the remaining funding should be on progressing by-passes and other projects that will contribute to achieving “Town Centre First” objective and “Compact Growth”.

In relation to New Roads, the Exchequer Capital grants to be provided in 2023 under Section 24 of the Roads Acts 1993 to 2015 amount to approximately €237 million, subject to the condition that this funding is allocated toward those projects listed in the Appendix. This is to ensure that key capital projects are advanced to support sustainable transport, including road-based public transport.

1.5 Key Points

Key points to note from this preamble are:

- The Exchequer allocations for national roads and greenways are confined by the funding voted by the Oireachtas and distributed by the Department of Transport (DoT).
- The funding provided to TII is for the purpose of fulfilling TII’s statutory duties and delivering Government policy in connection with national roads and greenways.
- The allocations are an indication of the progress that TII believes is possible on each national roads or greenways project, programme, or operation during 2023, and subject to the terms and conditions specified by the Minister in relation to the Exchequer Capital allocations. The allocations will be used to reimburse the relevant Local Authorities for costs incurred in accordance with national roads and greenways chargeability requirements.
- If the progression of any national roads or greenways project, programme or operation is impeded or priorities change, the funding will be redistributed by TII, in accordance with its statutory remit to other national roads or greenways projects, programmes, or operations.

2. NDP Funding

2.1 Funding 2021-2030

The NDP describes the total funding for the ten-year plan:

“This National Development Plan will incorporate a total public investment of €165 billion over the period 2021-2030. This will bring public investment to 5 per cent of GNI*, well above the EU average. Exchequer funding as approved by the Government and voted by the Oireachtas will account for €136 billion or approximately 80 per cent of the total funding. Non-Exchequer funding by State-backed enterprises and bodies will amount to almost €29 billion or 20 per cent of the total funding.”

(Source: NDP, Section 4.1, page 41)

Over the 2021-2030 period of the NDP, €35 billion is planned to be invested in the transport system, which will transform how people travel and halve Ireland's greenhouse gas emissions by 2030. Public transport is allocated €12 billion in capital funding, with national roads projects allocated €5.1 billion, local and regional roads allocated €675 million, and walking and cycling infrastructure receiving €4 billion.

This funding is further divided into two five-year periods. The NDP notes that funding is indicative (refer to NDP, Section 5.2, page 50). The funding for transport investment is heavily weighted to the second five-year period, i.e., 2026 to 2030. The NDP also provides for a mid-term review in 2025.

The NDP highlights the need for agility to help manage the funding requirements of programmes. Furthermore, the NDP provides for a capital reserve. These are noted in the following excerpt:

“An annual priority reserve is included in the plan and will be allocated each year during the Estimate process. Retaining this element of flexibility is an important principle of efficient public expenditure management. The reserve is not intended as a resource to meet any potential overspends or cost inflation, but rather to maintain the Government’s ability to continue to effectively recalibrate investment plans if priorities develop or change over the course of the Government. It is anticipated that there will be substantial Capital Carryover from 2021 into 2022 on account of the construction restriction in 2021 *[because of Covid]*, adding to the considerable delivery challenge in 2022. The NDP will need to use an agile approach to funding allocations and in-plan reprioritisation of funding, particularly where underspends and policy changes are apparent.”

(Source: NDP, Section 4.5, Page 44)

Because the funding for New Roads is weighted to the period 2026 to 2030 in the NDP, the New Roads programme is likely to progress at a faster pace in the years 2026 to 2030 in comparison with the years 2023, 2024 and 2025.

2.2 Multi-annual Period 2021-2025

From discussions between DoT and TII it is understood that approximately €2,400 million is intended to be allocated by DoT to TII over the period 2021-2025 as follows:

- Protection and Renewal: approximately €1,300 million, and
- New Roads: approximately €1,100 million.

The amounts above do not include TII’s toll income. Separate allocations for PPPs and greenways are provided by DoT to TII. The amounts are indicative.

2.3 Multi-annual Period 2026-2030

From discussions between DoT and TII it is understood that approximately €5,600 million (exclusive of allocations for PPPs and exclusive of toll income) is intended to be allocated by DoT to TII over the period 2026-2030 as follows:

- Protection and Renewal: approximately €1,600 million, and
- New Roads: approximately €4,000 million.

The precise level of funding for 2026-2030 will be determined in a new NDP for the period 2026-2035 following a scheduled review by Government in 2025.

3.0 NDP Priorities for National Roads

3.1 NDP Priorities

The National Strategic Outcomes (NSO) of Project Ireland 2040³ provide clear strategic direction on the role of national roads (Figure 2). Delivery of **NSO 2: Enhanced Regional Accessibility** has a key dependency on the improvement and maintenance of national roads. National roads also have a strong supporting role in the achievement of:

- NSO 1: Compact Growth
- NSO 3: Strengthened Rural Economies and Communities
- NSO 4: Sustainable Mobility
- NSO 6: High Quality International Connectivity
- NSO 8: Transition to a Low Carbon and Climate Resilient Society

There is a need to balance available funding across the national roads programmes, projects and operations having regard to the NDP. The rate of progress on the delivery of national roads investment priorities is dependent on the availability of funding resources on a multi-annual basis.

The NDP funding profile for 2021-2025 means several projects named in the NDP will be progressed during the period 2026-2030 or post-2030, in line with the projected increased funding expected to be available in the 2026-2030 period of the NDP.



Figure 2 - NDP National Strategic Outcomes (NSO)

3.2 National Roads 2040, National Development and Climate Action

The transport sector represents a major source of Ireland's greenhouse gases (GHG) emissions, accounting for approximately 18% in 2021. These emissions are generated from the movement of people and goods on the transport network, driven by emissions from internal combustion vehicles, both private vehicles and freight vehicles as well as the non-electrified public transport fleet. As population and economic growth are linked to travel demand, the transport sector's emissions will continue to grow without interventions as Ireland's population is planned to grow by a million people by 2040.

Beyond addressing the GHG emissions from energy and making energy efficiency improvements, TII is working with delivery partners, stakeholders, and suppliers to reduce the total emissions associated with construction, operation and maintenance of transport infrastructure, and use of TII's transport networks. This includes:

- TII's development of policies, strategies, industry standards and guidelines;
- Working with the supply chain to use more sustainable products and processes for projects; and

³ Project Ireland 2040 comprises (a) the [National Planning Framework](#) and (b) the [National Development Plan](#)

- Encouraging sustainable travel choices through the development of demand management measures and the provision of public transport and active travel infrastructure and services.

National Roads 2040 (NR2040), TII's long-term strategy for planning, operating, and maintaining the National Roads network, aligns with national policy aims set out in the Climate Action Plan 2023 (CAP23)⁴ and the Department of Transport's National Sustainable Mobility policy, as well as the four investment priorities from the National Investment Framework for Transport in Ireland (NIFTI)⁵: decarbonisation, protection and renewal, mobility of people and goods in urban areas, and enhanced regional and rural connectivity (Figure 3).

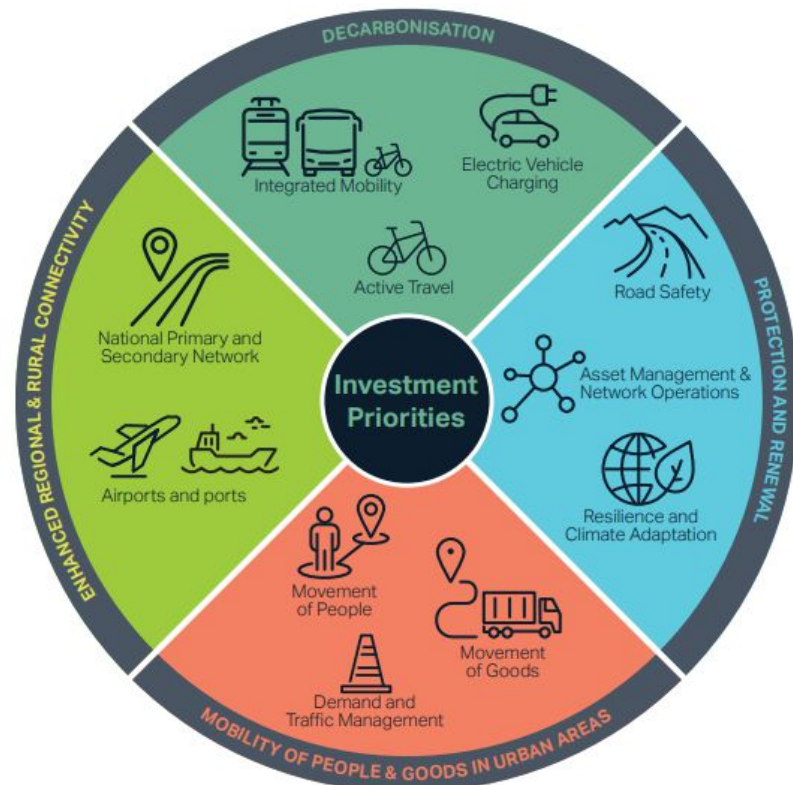


Figure 3 - NR2040 Investment Priorities

Decreasing the transport sector's GHG emissions involves reducing the use of internal combustion vehicles, and enabling public transport, walking, and cycling as the preferred travel options. There are many factors that contribute to individual travel decisions including the availability of high-quality network infrastructure and services, cost, accessibility, safety, convenience, reliability, and distance of travel. Travel on national roads contributed to 35% of total road transport emissions in 2018-2021.

The NCN will act as the core network connecting towns, cities and destinations across Ireland

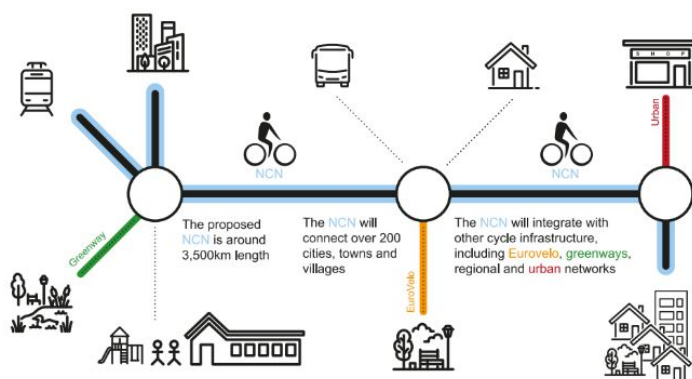


Figure 4 - National Cycle Network

Through the provision of sustainable transport infrastructure and services, including public transport and walking and cycling networks, TII can contribute to encouraging people to make lower carbon travel choices. Ireland's CAP23 contains several transport-focused targets and measures to shift to low energy transport modes such as walking, cycling, and public transport, alongside accelerating the electrification of road

⁴ [Climate Action Plan 2023](#)

⁵ [National Investment Framework for Transport in Ireland \(NIFTI\)](#), Department of Transport, December 2021

transport, reducing private car vehicle kilometres, and increasing the use of biofuels. TII is the lead agency for several of these measures including developing the National Cycling Network Plan (NCN)⁶ and the delivery of greenways (*Figure 4*). TII supports transport sector partners in the planning and delivery of the infrastructure to support the electrification of Ireland's car fleet, reducing the numbers of internal combustion vehicles. TII is progressing several programmes, projects, and studies which will contribute to understanding emissions from travel and supporting sustainable travel choices.

The NR2040 investment priorities are reinforced by a series of commitments which also influence the scope of projects on national roads developed by local authorities or other agencies. These commitments include:

1. **Future Demographic Growth Trends** - TII will continue to analyse possible growth in travel demand, reflecting Project Ireland 2040 population targets.
2. **Decarbonisation** - To reduce emissions, TII will prioritise traffic management investment in freight corridors and where congestion results in high levels of GHG emissions.
3. **Climate Adaptation and Resilience** - TII will enhance resilience of national roads, in particular sections of the rural national secondary road network, that provide lifeline links to individuals and communities.
4. **Sustainability** - TII will work with government agencies and stakeholders to support the CAP23 and government's national climate objective to "transition to a climate resilient, biodiversity rich, environmentally sustainable and climate neutral economy by 2050."
5. **Road Safety** - TII will deliver on its actions in the Government's Road Safety Strategy 2021-2030 'Our Journey towards Vision Zero' and collaborate with partners to deliver on supporting actions.
6. **Movement of People** - TII will support the National Transport Authority's (NTA) Connecting Ireland plan. TII is implementing prioritisation measures such as dedicated bus lanes where such prioritisation results in greater transport efficiency.
7. **Movement of Goods and Services** - TII will work to achieve average inter-urban speeds of 90km/h on National Road corridors between Ireland's five cities (Dublin, Cork, Galway, Limerick, and Waterford) and five regional centres (Letterkenny, Drogheda, Dundalk, Sligo, and Athlone).
8. **Urban Congestion** - TII will promote traffic management interventions that help optimise traffic movement on urban national roads.

3.3 Summary of NDP Priorities for National Roads

In summary, the Allocations seek to achieve the following key outcomes in accordance with the NDP priorities for national roads:

- **Protection and Renewal**
Maximise allocation of funding resources, as close to adequate levels as possible, to Protection and Renewal programmes, projects and operations. Road safety schemes, minor safety improvements projects, bus priority measures, and active travel infrastructure on national roads, are part of Protection and Renewal.

⁶ [National Cycle Network](#)

- **Major Projects in/near Construction (New Roads)**
Allocate sufficient funding resource to Major Projects in construction or commencing construction to meet contractual payment obligations.
- **N/M20 Cork to Limerick (New Roads)**
Allocate sufficient funding to continue planning and design of the N/M20 Cork to Limerick project with a view to achieving approval of its business case and making the application for its planning consent and land acquisition orders in the 2021-2025 period of the NDP. Commencement of main works construction, subject to approvals, expected to commence in the 2026-2030 period of the NDP. Completion of project expected to be post-2030.
- **Connectivity of Ports – Roads with Planning Consent (New Roads)**
Allocate sufficient funding to acquire land and progress advance works contracts for the N28 Cork to Ringaskiddy (planning consent confirmed March 2021) and the N21/N69 Limerick to Adare/Foynes (planning consent subject to confirmation by the courts). Commencement of main works construction of the N28 and N21/N69 projects, subject to approvals from Government, expected to commence in the 2026-2030 period of the NDP.
- **Connectivity of Ports – Roads in Planning (New Roads)**
Allocate sufficient funding to continue planning and design of the N11/N25 Oilgate to Rosslare project with a view to achieving approval of its business case and making the application for its planning consent and land acquisition orders in the period 2021-2025. Commencement of main works construction, subject to approvals by Government, expected to commence in the 2026-2030 period of the NDP.
- **N6 Galway City Ring Road (New Roads)**
Allocate sufficient funding to acquire land and progress advance works contracts for the N6 Galway Ring Road (planning consent remitted by the High Court back to An Bord Pleanála). Commencement of main works construction, subject to approvals by Government, expected to commence in the 2026-2030 period of the NDP.
- **Bypasses in Planning (New Roads)**
Allocate available funding, after meeting other priorities above, to continue planning and design of Major Projects that provide town or village bypasses with a view to supporting Compact Growth and Town Centre First⁷ objectives. Progression of individual projects in the planning consent process will be subject to approvals. A restricted number of projects are expected to commence main works construction, subject to approvals, in the 2026-2030 period of the NDP. Remaining projects are expected to continue progression through planning and/or commence main works construction, subject to approvals, post-2030.
- **Other Major Projects in Planning (New Roads)**
Allocate available funding, consistent with the Section 24 terms and conditions set by the Minister, to other Major Projects, many of which are on the NDP list of national roads projects in planning. Also make provision for funding suspension payments contractually obligated to technical advisers for projects in the planning and design stage that may not be advanced over the 2023-2025 period. Consider allocating funding available to TII, after meeting other priorities above, to other Major Projects proposed by TII or Local Authorities on a case-by-case basis.

⁷ [Town Centre First](#), Department of Rural and Community Development; Department of Housing, Local Government and Heritage, February 2022

4. The New Roads Programme

The components of the New Roads programme for national roads are described in this section.

4.1 New Roads with Planning Approval: M28 Cork to Ringaskiddy

The M28 Cork to Ringaskiddy Project is the upgrade of approximately 12.5km of the N28 National Primary Route from the N40 South Ring Road, at Bloomfield Interchange, to Ringaskiddy, Co. Cork. The N28 corridor is part of the Trans-European Network Transport (TEN-T), accessing the Tier 1 Port at Ringaskiddy. The TEN-T Regulations require that the Port is served by a high-quality road. The planning application for the M28 Cork to Ringaskiddy Project was submitted to An Bord Pleanála in May 2017. An Bord Pleanála approved the planning application with modifications in June 2018. The decision was cleared of all legal challenges in March 2021 and the project has now proceeded to the Advanced Works Stage. These works include land acquisition, site clearance, fencing, utility diversions and archaeology. Land acquisition and advance works commitments arise for all three funding scenarios required by DoT.

The implementation of the Port of Cork Masterplan and the transfer of port activities from the City Docks to new port facilities in Ringaskiddy, has key dependencies on the delivery of the M28 Cork to Ringaskiddy national roads project. The Proposed relocation of Port of Cork activities to lower harbour will leave room for the development of City Docks and Tivoli Docks. The Draft Cork City Development Plan 2022 – 2028 envisages new sustainable, people-centred city neighbourhoods in these locations supporting the NDP objective of Compact Growth.

With the Port of Cork identified as part of the core network in the European TEN-T network (*Figure 5*), land transport access to the new port facilities in Ringaskiddy is a priority. High-quality road access to the port is required to fulfil the port's obligations as a Tier 1 TEN-T port. Currently, container and bulk cargoes are distributed from the port by road to regional and national destinations. The upgrade of the N28 national road as a critical piece of infrastructure is necessary to achieve these requirements.



Figure 5 Trans-European Transport Network (TEN-T)

The [Cork Metropolitan Area Transport Strategy 2040](#) (CMATS) aligns with this

priority stating that “the proposed upgrade of the N28 (to become the M28) is a long- term strategic objective for both Cork City and County Councils” and this has been reiterated in the NDP that identifies it as a national economic priority. The N28 project will enable the relocation of the Port of Cork’s activities to Ringaskiddy.

4.2 New Roads in the Planning Approval Process: N52 Ardee Bypass; N6 Galway City Ring Road; and N21/N69 Limerick Adare Foyes

PROJECT	STATUS
N52 Ardee Bypass	Currently the subject of a judicial review
N6 Galway City Ring Road (N6 GCRR)	Subject of judicial review proceedings and the High Court quashed the planning approval for the scheme and directed it be remitted back to An Bord Pleanála for a new decision
N21/N69 Limerick Adare Foyes	Received planning approval from An Bord Pleanála on 31 August 2022 and is currently the subject of judicial review proceedings of its planning approval

N52 Ardee Bypass

Louth County Council is progressing the N52 Ardee Bypass, which is proposed to pass to the west of Ardee. It is 4.5 km in length from Mandistown crossroads on the N52 west of Ardee, just inside the Meath county boundary, to Glebe townland on the N2 just north of Ardee. It is designed as a single carriageway road and comprises six junctions, including a proposed roundabout on the N2. The scheme includes two river crossings at the River Dee and the River Garra. Currently, the environmental screening decision of An Bord Pleanála is the subject of a challenge through judicial review. TII must fund Louth County Council's participation, as a notice party, in the legal proceedings to protect the integrity of the State's planning process.

Multiple collisions have been recorded along the N52 from Mandistown cross-roads to the N2 and on the N2 from the N52 junction to the N33 roundabout in the assessment years 2008 to 2016 inclusive. A total of 1 fatal, 5 serious and 31 minor accidents have occurred over this eight-year period, resulting in 34 minor casualties, 4 serious casualties and one fatality. These sections of the N52 and N2 consistently have an above or twice above average collision rate when compared to similar categories of road around the country.

The N52 is important for enhancing regional accessibility and improving connectivity to border counties. The bypass of Ardee would provide greater capacity for passenger and freight traffic on the route, which would support economic expansion of the region. In the context of Ardee, this bypass project supports the Compact Growth objective of the NDP and Town Centres First. In addition, the project supports improved road safety, reduced vehicular traffic in the town, better air quality and more active travel opportunities in the town, thereby providing for a better quality of life for local residents.

N6 Galway City Ring Road

Galway County Council (GCC), on behalf of itself and on behalf of Galway City Council, is proposing the N6 Galway City Ring Road (N6 GCRR) around Galway City (Figure 6). An Bord Pleanála's (ABP) approval of the scheme was quashed arising from judicial review proceedings and has been remitted back to ABP for a new planning decision. TII is funding GCC's participation in the State's planning process.



Figure 6 Galway City Ring Road

The N6 GCRR is a key component of the [Galway Transport Strategy](#) (GTS) which realises Galway City and County Council's vision of all elements of transport working together to achieve an integrated sustainable transport solution. The GTS will be reviewed in 2023.

This vision recognises that the West Region has a significant and valuable resource in its natural heritage environment with a wide variety of species and habitats of local, national and international importance, whilst also being conscious of the need to establish effective communication links to ensure that the region continues to thrive and to offer an alternative to the East Coast corridor. To get Galway City and its environs working and functioning in a sustainable manner for the future is key to this vision.

Galway City experiences significant transport problems such as:

- Peak period congestion and journey time unreliability;
- Over-reliance on private cars;
- Lack of alternative transport modes; and
- Lack of road space for the development of Smarter Mobility and Public Transport.

The initial studies for this transport solution were undertaken as part of the N6 [Galway City Transport Project](#) (GCTP). The N6 GCTP recognised that Galway has a transport problem and confirmed that there is a strong need to address the transport issues facing the city and surrounding areas and to underpin future sustainable growth by establishing a long-term strategy for transport to, within and around the city. The studies undertaken for the N6 GCTP confirmed that a new River

Cross-City Link Concept



Figure 7 Cross-City Link Concept

Corrib bridge crossing is possible and identified a preferred location for this crossing. A key benefit of the GCRR is that it will enable the Cross-City Link Concept (Figure 7), which will increase priority of walking, cycling and public transport over private cars in the city centre, and remove motorised traffic whose destination is outside the city. Cross-City Link will create a coherent public space that is attractive with a sense of continuity, identity and provide a safe environment for all.

The necessity and benefit of developing a transportation solution were established

during *Phase 1: Scheme Concept and Feasibility Studies*. A suitable study area within which key constraints were identified, alternatives examined, and feasible solutions developed was identified during *Phase 2 – Route Selection Stage*. A systematic assessment of these options was undertaken which led to the selection of the Emerging Preferred Route Corridor for the road component of the transport vision, the N6 Galway City Ring Road. The Emerging Preferred Route Corridor was published in May 2015. The design was then developed during *Phase 3 – Design*, to a stage where sufficient levels of detail exist to establish land take requirements and to progress the scheme through the statutory processes.

N21/N69 Limerick-Adare-Foynes

An Bord Pleanála (ABP) approved the planning for the N21/N69 Limerick-Adare-Foynes scheme on 30 August 2022. The scheme is currently subject to judicial review proceedings seeking to challenge ABP's approval of the planning for the scheme. The project provides TEN-T (Trans-European Transport Network – Transport) Core Network standard road infrastructure for access to the Shannon-Foynes TEN-T Tier 1 Port at Foynes, Co. Limerick, and TEN-T Comprehensive Network standard road infrastructure on the Limerick to Kerry route, in accordance with the TEN-T Regulations. The proposed project is 35km in length and will provide an upgrade of national roads from Attyflin to Rathkeale, in addition to connecting the Shannon-Foynes Port to the motorway network.

The project consists of:

- Approx.15.6 km dual carriageway from Foynes to Rathkeale (with approx.1.9km single carriageway link road between Ballyclogh and Askeaton)

- Approx. 17.5 km motorway from Rathkeale to the existing motorway network at Attyflin (N21/N20/M20 junction)
- A Service Area for Heavy Goods Vehicles near Foynes Port

This project promotes efficient and effective transport links in the Munster region, improving connectivity between Foynes Port, Limerick and the surrounding areas. The project will improve the urban environment of the heritage town of Adare.

4.3 N/M20 Limerick to Cork

The N/M20 Limerick to Cork project is a priority in Project Ireland 2040 (i.e., the NDP and the National Planning Framework). The route is on the TEN-T comprehensive network.

The planning and design for the project is considering sustainable transport every step of the way. The project includes proposals for improving public transport and maximising use of existing infrastructure, e.g., the preferred route utilises up to 40% of the existing N20 corridor. Options for demand management are also being considered.

The preferred option for the project provides 80 kilometres of active travel infrastructure (walking and cycle), connecting together the communities of Cork, Blarney, Grenagh, Rathduff, Mallow, New Twopothouse, Buttevant, Charleville, Bruere, Banoge, Croom, Patrickswell and Limerick.

The N/M20 Limerick to Cork enhances regional connectivity, providing better connectivity between Ireland's second and third largest cities by improving the quality of the transport network which will also address safety issues associated with the existing N20 route and provide for safer and more efficient journey times, saving 200 fatal / serious injury collisions over the 30-year appraisal period (*Figure 8*).

The project includes recommendations for transport networks in the region, including train services, mobility hubs – multi modal travel, bus route enhancements – tying in with NTA plans, town enhancement via reallocation of road space, which will also facilitate implementation of Town

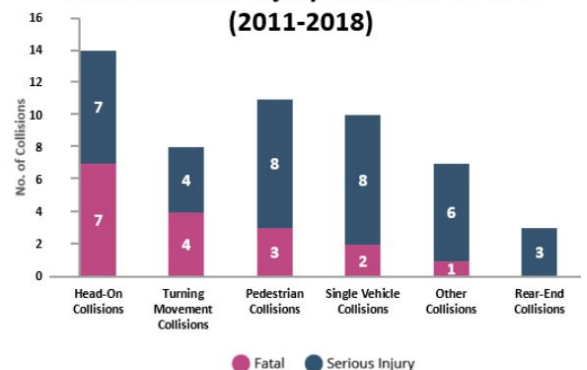
Personal Injury Collision History for N20 (2011-2018)



Total 253 collisions in eight years

● Fatal ● Serious Injury ● Minor Injury

Fatal & Serious Injury Collisions for N20 (2011-2018)



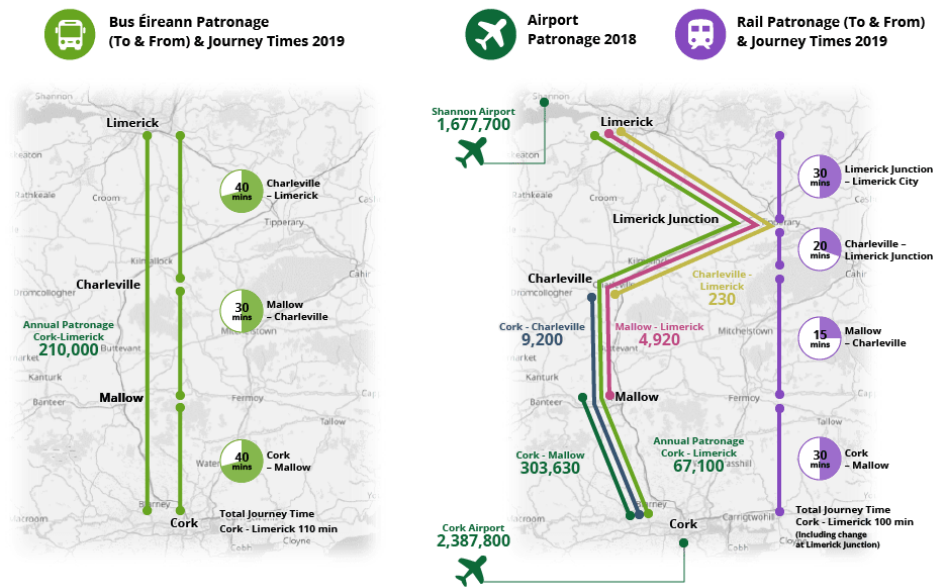
Note: Fatal and serious injury collisions may involve multiple casualties.

Figure 8 N20 Collisions

Centre First and Safe Routes to Schools. This is a transportation and land use planning project, not focused on road-based transportation but on delivering strategic outcomes for the region and Ireland holistically. That is, delivery in accordance with national sustainable mobility policy – integrated mobility / avoid-shift-improve / people focused mobility – and integration with

planned transportation networks in the Limerick and Cork metropolitan areas. The project will also deliver wider benefits by enabling sustainable and effective spatial strategy facilitating regional population growth and associated needs by enhancing transport, access to services and greater opportunities for employment.

BUS, AIR & RAIL PATRONAGE



4.4 TEN-T Route Improvement Donegal

The objective of this project is to improve the national roads network in County Donegal designated part of the TEN-T comprehensive network so that it complies with the TEN-T Regulations and deliver transport and wider economic and society benefits. The project is highlighted in Project Ireland 2040 and is important for addressing disparities between the North-West and the rest of Ireland, which have been exacerbated in recent years by Brexit. The north and west of Ireland has been downgraded to a “lagging region” by the European Commission after becoming significantly poorer relative to the European average over recent years.

The project will improve connectivity within the county as well as regional and national accessibility to and from Donegal and the North-West. The project will also enhance network resilience, necessary for climate adaptation. Currently on the routes, casualties of approximately 6 fatal, 19 serious and 354 slight injuries have occurred, suggesting the scheme will have a highly positive impact on safety.

4.5 New Roads in Planning Process - GDA Transport Strategy / Cork CMATS

These projects are contained in the [Greater Dublin Area \(GDA\) Transport Strategy](#), and the Cork Metropolitan Area Transport Study (CMATS). In general, these projects have the objective to facilitate local movements, enabling active travel and supporting Town Centres First, improving regional accessibility and connectivity, integration with planned transportation networks including by provision of bus priority measures, reducing bottlenecks, and addressing safety issues.

4.6 New Roads in Planning Process - N11/N25 Oilgate to Rosslare (TEN-T Port Connectivity)

The N11/N25 Oilgate to Rosslare is part of the TEN-T comprehensive network. This route also forms part of the European Designated E01 Route and provides a direct link to both mainland Europe and the United Kingdom via Rosslare Europort.

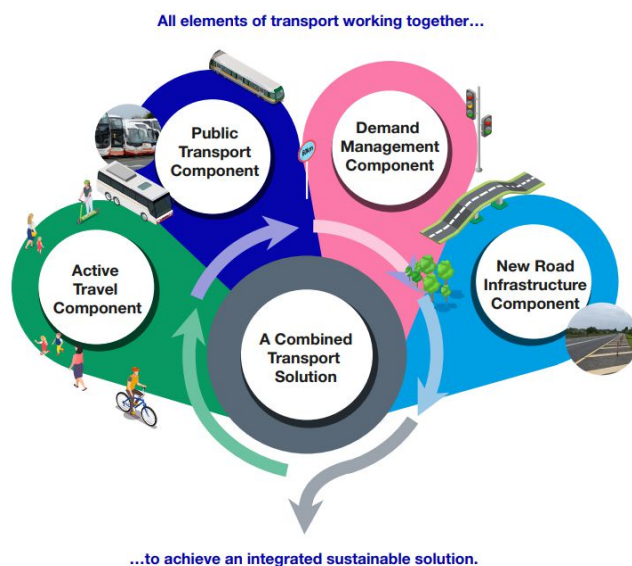
There are very significant additional increases in freight volumes through the Port since the end of the Brexit transition period (over 460% in first half of 2021). This project aims to secure the future resilience of this international land-sea corridor by delivering a safe, sustainable, high quality and cost-effective transport connection with Rosslare Europort enhancing regional, national and international connectivity, and facilitating economic growth of Ireland.

The project will improve the connectivity of transport infrastructure and services, including public transport and active travel, thereby delivering more accessible and equitable mobility options, particularly for vulnerable groups. The planning and design of options being examined all maximise use of the existing corridor.



4.7 New Roads in Planning Process – Town Bypasses / Compact Growth / Town Centres First

This component of the New Roads programme comprises town bypasses or relief roads, which particularly contribute to the NDP objective of Compact Growth in towns and support the national policy Town Centres First.



In general, each town bypass project is listed in Project Ireland 2040. The benefits of the projects include improving connectivity within their counties as well as improving regional and national accessibility to and from their region. In each case, town enhancement via reallocation of road space is planned to follow implementation supporting Town Centres First, Safe Routes to Schools, and integration with mobility hubs, parking controls, active travel and bus enhancement projects. The result is all elements of transport working together to achieve an integrated sustainable solution.

4.8 New Roads in Planning Process – Safety Improvement

This component of the New Roads programme comprises improvements to sections of the national roads network with safety issues significantly above the national average. These projects also provide other significant transport benefits, including enhancing regional accessibility and thereby supporting balanced regional development.

5. Protection and Renewal of National Roads

5.1 Overview of Protection and Renewal

Protection and Renewal includes asset management to maintain the national roads network in an acceptable steady-state condition, Minor Safety Improvement Projects, the National Secondary Roads programme, the Safety Programme, operations and maintenance of motorways and tunnels, Intelligent Transport Systems (ITS), minor projects for active travel, bus priority improvements, and operation of the M50 managed motorway system of variable speed limits and incident management.

5.2 Maintenance

There is a separate Maintenance allocation from the Exchequer that is Current funding. In recent years the Exchequer allocation for Maintenance has been approximately €35 million per year, which is materially below the de minimis amount required for adequate maintenance. TII provides grants to Local Authorities from the Maintenance (Current Funding) budget heading as a contribution to routine maintenance of national roads not otherwise maintained through the Motorway Maintenance and Renewal Contracts (MMARC). The Maintenance (Current) budget heading is materially underfunded with respect to actual routine maintenance requirements and when benchmarked against the budgets for maintenance in other European countries. Therefore, maintenance activity must be supplemented with asset management and rehabilitation programmes through the Protection and Renewal programme (Capital Funding).

5.3 Operations and Asset Management

Protection and Renewal also includes tolling operations, network management, oversight of national roads PPPs, PPP operational and availability payments, intelligent transport systems (ITS), and other TII enterprise costs (excluding pay and rent for TII offices, which comes under the Administration heading of Current expenditure). These are generally paid directly by TII through contractual arrangements between TII and its operations contractors.

The Steady State part of the Protection and Renewal programme consists of various programmes and projects for delivery of asset management and network rehabilitation. This includes pavement rehabilitation, minor safety schemes, winter maintenance, motorway operations and maintenance, tunnel operations and maintenance, bridge maintenance, and other asset management activity essential for securing the safety and upkeep of the national roads network.

5.4 National Secondary Roads

National Roads 2040 sets out TII's long term strategy for the planning, operation, and maintenance of the national roads network. As part of the strategy, the National Secondary Road (NSR) network has been classified into several sub-divisions based on role and function to assist in the identification of future intervention needs. Consistent with the Strategy, National Secondary programmes have been included under Protection and Renewal in 2023 to target interventions on National Secondary Roads: NSR Lifeline Routes, NSR Bypasses, and NSR Resilience.

NSR Lifeline Routes

These routes have high relative importance, provide connections to critical services and facilities, and are often the only acceptable route available being located in coastal and/or mountainous terrain. These projects support regional accessibility, improved safety, and provide lifeline access (i.e., where loss of a section of the road would necessitate very lengthy detours for local people).

NSR Bypasses

The NDP, Town Centre First, and CAP23 support compact growth, the removal of through-traffic from town centres and the reallocation of road-space to active travel. Consistent with these policies this new programme aims to identify and delivery several National Secondary bypasses and urban regeneration projects through the planning and design stage for implementation in the future.

NSR Resilience

The objective of this programme is to secure adequate infrastructure for both the NSR arterial and collector routes. National Secondary Arterial Routes are high demand routes close to large urban settlements. They provide a similar role to National Primary Routes and users are reliant on these routes to access essential services and jobs. National Secondary Collector Routes are normal travel routes, connecting settlements on the most direct lines but with some level of redundancy though alternative routes.

5.5 National Roads Active Travel

TII has a key role in the development of standards and technical guidance relating to active travel and in project delivery. TII's responsibilities include the development of greenway and active travel standards; advancing a programme of major rural active travel schemes; and developing a coherent and connected national cycle network strategy on behalf of DoT. The National Roads Active Travel programme generally comprises minor projects and typically involves the retrofitting of walking and cycling infrastructure to existing sections of national roads.

6. Greenways

6.1 Approving Authority

Following communication from the Minister for Transport in May 2021, TII was identified as Approving Authority with responsibility for the national and regional greenway programme, commencing 20th September 2021. Following this identification, significant engagement between TII and the DoT was necessary to ensure seamless transfer of responsibilities and programme continuity. Moreover, during the handover period, amendments to TII processes, procedures, and standards were enacted or extended to apply to the advancement of the national and regional greenway programme.

6.2 Greenways Strategy

The objective of the Greenways Strategy⁸ is to assist develop nationally and regionally significant Greenways in appropriate locations constructed to an appropriate standard to deliver a quality experience for all Greenway users. The strategy also aims to increase the number and geographical spread of Greenways of scale and quality around the country over the next ten years with a consequent significant increase in the number of people using Greenways as a visitor experience and as a recreational amenity.

Greenways are required to meet the following criteria:

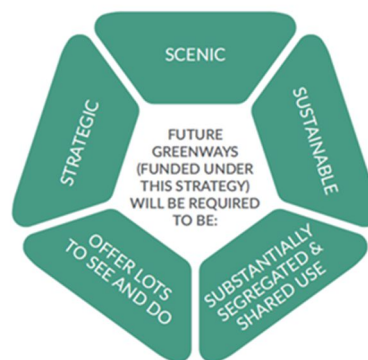
Strategic: National Greenways should be at least 100km long, while Regional Greenways should be at least 20km long, preferably closer to 40km, or else can be extended to connect to a longer strategic route. A Greenway should provide a strategic link to other activities and locations e.g., Walkways, Blueways, and Peatways.

Sustainable: contribute to the economic growth of rural areas, development of tourism and activity-based holidays which helps to promote National & Regional attractiveness as a tourist destination.

Scenic: provide access to/through areas of natural beauty.

Substantially Segregated: from vehicular traffic and shared use by pedestrians, cyclists, and a range of different users.

Offer lots to See & Do: provide access to other facilities i.e., historic sites, tourist attractions and other outdoor activities.



6.3 Greenways Delivery

Feasibility, planning, and development works are continuing a range of national and regional greenway projects as identified under the Strategy for the Future Development of Regional and National Greenways⁹. Regional and national greenway projects cumulatively total approximately 900 kilometres.

⁸ [Strategy for the Future Development of National and Regional Greenways](#)

⁹ [Strategy for the Future Development of National and Regional Greenways](#)

The Greenways Programme comprises Greenways Protection and Renewal, and New Greenways. Most greenways projects are relatively straight-forward in engineering terms with some exceptions, such as the bridge in Athlone crossing the Shannon, as shown in Figure 9.



Figure 9 - Dublin Galway Greenway: Athlone Bridge Lift (September 2022)

For 2023 it is anticipated that approximately half of the total allocation for greenways will be spent on projects at or starting construction, while the remainder will mostly be spent on projects at various stages of planning.

7. The Allocations for 2023

In accordance with the Roads Acts 1993 to 2015, it is the general duty of TII to secure the provision of a safe and efficient network of national roads and for that purpose TII has overall responsibility for the planning and supervision of works for the construction and maintenance of national roads. Pursuant to its statutory duty for national roads, and its agreement with the Minister for greenways, TII allocates the Exchequer Capital Allocation for 2023 to Local Authorities for national roads and greenways.

For each Local Authority the allocation for national roads is made under two main headings:

- Improvement: Allocated to specific projects, programmes, and/or operations.
- Maintenance: Separate allocations for national primary and national secondary routes, and further sub-divided across ordinary maintenance, route lighting, and winter maintenance.

In keeping with current practice and procedures, TII and Local Authorities will continue to monitor progress on the planning, design and delivery of programmes, projects and operations set out in the Allocations through established Management Advisory Committees and related reporting and management processes.

Appendix

In relation to New Roads, the Minister has made it a condition, under Section 24 of the Roads Acts 1993 to 2015, that the Exchequer Capital grants to be provided by DoT to TII for 2023 are allocated towards those projects listed in the table below.

Name	Next PSC Decision Gate	Proposed Allocation - 2023	COMMENTS
CLOSE OUT AND COMMITTED LAND COSTS			
Naas Newbridge Bypass Upgrade	N/A	€460,000	Outstanding committed payments
Collooney to Castlebaldwin	N/A	€1,900,000	Outstanding committed payments
N13 Letterkenny Roundabout	N/A	€50,000	Close out of construction costs
N56 Mountcharles to Inver	N/A	€20,000	Outstanding committed land payments
Tralee to An Daingean	N/A	€300,000	Outstanding committed land payments
Cashel/Mitchelstown	N/A	€25,000	Outstanding committed land payments
Westport to Mulranny	N/A	€300,000	Outstanding committed land payments
Clifden to Oughterard	N/A	€400,000	Outstanding committed land payments
N56 Drumbeigh to Inver	N/A	€50,000	Close out of construction costs
N56 Kilkenny to Letterilly	N/A	€230,000	Close out of construction costs
CONSTRUCTION COMMITMENTS			
Ballyvourney to Macroom	N/A	€39,000,000	Committed construction, supervision and land payments required for progression. Includes provision for claims raised by contractor.
Dunkettle Interchange	N/A	€1,500,000	Dunkettle supervision staff employed through Cork County Council.
Int Maj - Dunkettle Interchange Upgrade	N/A	€40,000,000	Committed construction, supervision, and land payments.
Moycullen Bypass	N/A	€25,000,000	Commitment required for construction, land, and supervision. Conciliation to take place in early November, if resolved in 2022 then there could be a potential reduction in commitment required in 2023.
Listowel Bypass	N/A	€22,000,000	Committed construction, supervision, and land payments.
Westport to Turlough	N/A	€39,000,000	Committed construction, supervision and land payments required for progression. Includes provision for claims raised by contractor.
Ballaghaderreen to Scramoge	N/A	€12,000,000	Government decision and approval given to proceed with this contract. Date for tender return is February 24 th , 2023.
N56 Dungloe to Glenties	N/A	€140,000	Committed land costs
N56 Kilkenny to Letterilly	N/A	€230,000	Committed construction costs

N56 Letterilly to Kilraine Junction	N/A	€4,000,000	Committed construction costs
N56 Dungleoe to Cloghbolie	N/A	€400,000	Committed construction costs
N56 Letterilly to Kilraine Road Scheme	N/A	€1,000,000	Committed construction costs
WITH PLANNING APPROVAL			
Cork to Ringaskiddy	DG2	€19,000,000	Proceeding to Decision Gate 2. This is a TEN-T Core Route and Port Access project. Funding in 2023 will allow for progression and preparation of tender documentation.
IN PLANNING APPROVAL PROCESS			
Ardee By-Pass (N52)	DG2	€350,000	Judicial review underway, this is to account for legal costs.
Galway City By-Pass	DG2	€3,000,000	Committed land payments and costs associated with dealing with the decision of the Board and further environmental analysis
Foynes Limerick	DG2	€2,000,000	Currently the subject of applications for Judicial Review of the decision to grant planning permission. Allocation for 2023 is to cover legal costs.
PRIORITY PROJECTS			
NDP - M20 Limerick to Cork	DG1	€5,000,000	Allocation for 2023 covers committed technical advisor fees associated with the planning and design of the preferred route.
TEN T /REGIONAL ACCESS/PORT ACCESS			
TEN-T Route Improvement Donegal	DG1	€1,500,000	Committed funding under existing technical advisor contract. Preparing for Decision Gate 1 approval.
IN PLANNING PROCESS (GDA & CMATS STRATEGIES)			
NDP - N3 M50 to Clonee (inc bus priority)	DG1	€500,000	Funding in 2023 will meet current project commitments, then reviewed to prioritise buses and cycle ways.
NDP - N2 Rath Roundabout to Kilmoon Cross	DG1	€750,000	Funding in 2023 will meet current project commitments.
NDP - N4 Maynooth to Leixlip (inc bus priority)	DG1	€0	This project will be funded as part of the Minors Programme €0.65m (P&R Budget) The Minister wishes to see prioritisation afforded to the Bus Priority measures on M4.
NDP - N11/M11 Junction 4 to Junction 14 (inc bus priority)	DG1	€0	This project will be funded as part of the Minors Programme €2m (P&R Budget). The Minister wishes to see prioritisation afforded to the Section A and Section C Bus Priority measures on M11.
Cork City Northern Transport Project Ring Road (SAR submitted)	DG0	€100,000	Funding in 2023 will meet current project commitments.
PORT CONNECTIVITY			

N11/N25 Oilgate to Rosslare	DG1	€1,150,000	Funding provided to match TEN-T grant from EU for planning and design.
BYPASSES			
N22 Farranfore to Killarney (safety project and bypass of Farranfore)	DG1	€100,000	Funding in 2023 will meet current project commitments.
N3 Virginia Bypass	DG1	€2,000,000	The Minister wishes to see prioritisation afforded to the provision of the bypass and the provision of a concurrent Traffic Management Plan for Town centre
N4 Carrick-on-Shannon to Dromod (bypass of Carrick On Shannon)	DG1	€2,500,000	The Minister wishes to see prioritisation afforded to the provision of the bypass and the provision of a concurrent Traffic Management Plan for Town centre
N21 Newcastle West Relief Road	DG1	€1,450,000	The Minister wishes to see prioritisation afforded to the provision of the bypass and the provision of a concurrent Traffic Management Plan for Town centre
N21 Abbeyfeale Relief Road	DG1	€1,450,000	The Minister wishes to see prioritisation afforded to the provision of the bypass and the provision of a concurrent Traffic Management Plan for Town centre.
N72/73 Mallow Relief Road	DG1	€100,000	Funding in 2023 will meet current project commitments.
N2 Slane Bypass and Public Realm Enhancement Scheme	DG1	€350,000	Funding in 2023 allows the further progression of this project
N24 Cahir to Limerick Junction (Tipperary Bypass)	DG1	€1,000,000	Funding in 2023 allows the further progression of this project
N58 Foxford Bypass (*not in NDP)	DG1	€250,000	Funding in 2023 allows the further progression of this project
Midleton to Youghal - bypasses Castlemartyr and Killeagh (*Not in NDP)	DG0	€800,000	Funding in 2023 allows the further progression of this project
UPGRADES			
N2 Ardee to South of Castleblaney Bypass	DG1	€600,000	Funding in 2023 will meet current project commitments.
N17 Knock to Collooney	DG1	€400,000	Funding in 2023 will meet current project commitments.
N4 Mullingar to Longford	DG1	€200,000	Funding in 2023 will meet current project commitments.
N24 Waterford to Cahir	DG1	€2,000,000	Funding in 2023 allows the completion of route selection.
N2 Clontibret to the Border	DG1	€2,500,000	Funding provided to match TEN-T grant from EU for planning and design.
Total		€237,055,000	

2023 Allocations



High-level Overview

TII - 2023 Grant Allocation to Local Authorities for National Roads and Greenways

Grant Allocation Overview per Budget Classification

Payee	Capital Investment - Protection & Renewal & Active Travel (AT)	Construction of New Roads	Current Maintenance - Protection & Renewal	Greenways	PPP Payments	Total
Carlow County Council	1,798,000		230,898	60,000		2,088,898
Cavan County Council	21,445,000	2,000,000	499,512	550,000		24,494,512
Clare County Council	3,137,800		602,040	2,130,000		5,869,840
Cork City Council	3,874,000	100,000	418,208			4,392,208
Cork County Council	18,073,000	60,400,000	1,290,093	3,850,000		83,613,093
Donegal County Council	13,818,000	7,390,000	1,095,799	2,090,000		24,393,799
Dun Laoghaire Rathdown County Council			458,599			458,599
Fingal County Council	50,000	500,000	342,000	500,000		1,392,000
Galway City Council	450,000		197,989			647,989
Galway County Council	10,443,060	28,400,000	1,048,358	4,650,000	25,000	44,566,418
Kerry County Council	15,060,220	22,400,000	1,074,888	6,450,000		44,985,108
Kildare County Council	10,910,000	460,000	410,377	4,100,000		15,880,377
Kilkenny County Council	9,278,650	2,000,000	616,633	100,000		11,995,283
Laois County Council	4,800,000		474,158			5,274,158
Leitrim County Council	2,513,000	2,500,000	335,230	1,750,000		7,098,230
Limerick City and County Council	12,710,000	9,900,000	680,901	3,400,000		26,690,901
Longford County Council	5,875,000		413,790	372,000		6,660,790
Louth County Council	1,035,000	350,000	268,638	700,000		2,353,638
Mayo County Council	22,154,462	39,550,000	1,276,467	2,320,000		65,300,929
Meath County Council	6,146,000	1,100,000	529,967	1,364,000		9,139,967
Monaghan County Council	8,495,000	3,100,000	508,463	2,150,000		14,253,463
Offaly County Council	4,475,000		406,012	3,880,000		8,761,012
Roscommon County Council	7,488,105	12,000,000	764,037	1,580,000		21,832,142
Sligo County Council	15,778,000	2,300,000	770,685	790,000		19,638,685
South Dublin County Council			550,320	950,000		1,500,320
Tipperary County Council	6,616,000	1,025,000	836,084	1,400,000		9,877,084
Waterford City and County Council	4,550,123		351,367	700,000		5,601,490
Westmeath County Council	4,899,700	200,000	594,389	8,620,000		14,314,089
Wexford County Council	4,380,958	1,150,000	553,294	3,350,000		9,434,252
Wicklow County Council	4,330,000		297,126	2,800,000		7,427,126
Total	224,584,078	196,825,000	17,896,322	60,606,000	25,000	499,936,400

TII - Grant Allocation to Local Authorities for National Roads and Greenways

Capital Investment - Protection & Renewal & Active Travel (AT)

Classification		Both NP/NS						National Primary						National Secondary						Capital Investment		
Payee		Bridge Rehabilitation 1a - Nat	HD15 and HD17 Minor Works 1a - Nat	LA Eng Support - B.1.1a - Nat	Minor Works 1a - Nat	Pavement 1a - Nat	Classification Sub-total	AT: Minor Works 1a - Nat	HD15 and HD17 Minor Works 1a - Nat	LA Eng Support - B.1.1a - Nat	Major Scheme 1a - Nat	Minor Works 1a - Nat	Pavement 1a - Nat	Classification Sub-total	AT: Minor Works 1a - Nat	Bridge Rehabilitation 1a - Nat	HD15 and HD17 Minor Works 1a - Nat	Minor Works 1a - Nat	Pavement 1a - Nat	Classification Sub-total	- Protection & Renewal & Active Travel (AT) - Total	
Carlow County Council			10,000	110,000			120,000										125,000		1,553,000	1,678,000	1,798,000	
Cavan County Council			20,000	550,000			570,000		305,000			100,000	3,735,000	4,140,000			200,000	10,350,000	6,185,000	16,735,000	21,445,000	
Clare County Council				220,000			220,000	25,000				500,000		525,000			255,000	50,000	2,087,800	2,392,800	3,137,800	
Cork City Council				200,000			200,000				2,000,000		1,674,000	3,674,000							3,874,000	
Cork County Council			25,000	2,800,000			2,825,000	450,000	13,000			100,000	750,000	1,313,000	650,000		1,835,000	6,340,000	5,110,000	13,935,000	18,073,000	
Donegal County Council		250,000		3,370,000		150,000	3,770,000		1,220,000			1,550,000	1,100,000	3,870,000	500,000		1,103,000	350,000	4,225,000	6,178,000	13,818,000	
Fingal County Council												50,000		50,000							50,000	
Galway City Council				50,000			50,000					400,000		400,000							450,000	
Galway County Council		250,000	20,000	2,005,560			2,275,560					300,000		300,000	665,000	1,000,000	1,742,500	950,000	3,510,000	7,867,500	10,443,060	
Kerry County Council		1,755,000	100,000	2,550,000			4,405,000		72,000			200,000	1,400,000	1,672,000	1,450,000		510,000	3,800,000	3,223,220	8,983,220	15,060,220	
Kildare County Council		7,260,000		2,750,000			10,010,000					630,000		630,000		100,000	20,000		150,000	270,000	10,910,000	
Kilkenny County Council			25,000	230,000			255,000		5,000,000			100,000		5,100,000			30,000	750,000	3,143,650	3,923,650	9,278,650	
Laois County Council				100,000			100,000												4,700,000	4,700,000	4,800,000	
Leitrim County Council			50,000	213,000			263,000		300,000			750,000	1,200,000	2,250,000							2,513,000	
Limerick City and County Council			25,000	2,355,000		50,000	2,430,000		2,130,000			2,550,000	2,000,000	6,680,000			1,100,000		2,500,000	3,600,000	12,710,000	
Longford County Council				213,000			213,000		7,000					7,000			1,025,000	500,000	4,130,000	5,655,000	5,875,000	
Louth County Council				128,000			128,000		75,000				90,000	165,000				500,000	242,000	742,000	1,035,000	
Mayo County Council		1,750,000		2,074,738			3,824,738		1,319,724			1,100,000	800,000	3,219,724	800,000		435,000	8,375,000	5,500,000	15,110,000	22,154,462	
Meath County Council			1,000,000	500,000			1,500,000	200,000	235,000					435,000			476,000	3,000,000	735,000	4,211,000	6,146,000	
Monaghan County Council			50,000	320,000			370,000	760,000	60,000			25,000	6,250,000	7,095,000		500,000	20,000	500,000	10,000	1,030,000	8,495,000	
Offaly County Council				275,000			275,000												4,000,000		4,200,000	4,475,000
Roscommon County Council				2,183,105			2,183,105	540,000	220,000				1,600,000	2,360,000			175,000	750,000	2,020,000	2,945,000	7,488,105	
Sligo County Council				213,000			213,000	550,000	10,000	1,360,000		10,350,000	840,000	13,110,000			5,000		2,450,000	2,455,000	15,778,000	
Tipperary County Council		250,000		350,000			600,000		1,710,000				1,200,000	2,910,000			906,000	500,000	1,700,000	3,106,000	6,616,000	
Waterford City and County Council			5,000	2,580,000			2,585,000		205,123			50,000	10,000	265,123					1,700,000	1,700,000	4,550,123	
Westmeath County Council				2,023,000	10,000		2,033,000						811,200	811,200			20,000	760,000	1,275,500	2,055,500	4,899,700	
Wexford County Council			20,000	100,000		50,000	170,000		500,958			500,000	1,610,000	2,610,958					1,600,000	1,600,000	4,380,958	
Wicklow County Council			10,000	350,000			360,000	750,000	465,000			2,000,000		3,215,000			55,000	200,000	500,000	755,000	4,330,000	
Total		11,515,000	1,360,000	28,813,403	10,000	250,000	41,948,403	3,275,000	13,847,805	1,360,000	2,000,000	21,255,000	25,070,200	66,808,005	4,065,000	1,600,000	10,037,500	37,875,000	62,250,170	115,827,670	224,584,078	

TII - Grant Allocation to Local Authorities for National Roads and Greenways

Construction of New Roads



Classification	National Primary		National Secondary		Construction of New Roads - Total
Payee	Major Scheme 1b - Nat	Classification Sub-total	Major Scheme 1b - Nat	Classification Sub-total	
▲					
Cavan County Council	2,000,000	2,000,000			2,000,000
Cork City Council	100,000	100,000			100,000
Cork County Council	60,300,000	60,300,000	100,000	100,000	60,400,000
Donegal County Council	1,550,000	1,550,000	5,840,000	5,840,000	7,390,000
Fingal County Council	500,000	500,000			500,000
Galway County Council	3,000,000	3,000,000	25,400,000	25,400,000	28,400,000
Kerry County Council	100,000	100,000	22,300,000	22,300,000	22,400,000
Kildare County Council	460,000	460,000			460,000
Kilkenny County Council	2,000,000	2,000,000			2,000,000
Leitrim County Council	2,500,000	2,500,000			2,500,000
Limerick City and County Council	9,900,000	9,900,000			9,900,000
Louth County Council			350,000	350,000	350,000
Mayo County Council	39,000,000	39,000,000	550,000	550,000	39,550,000
Meath County Council	1,100,000	1,100,000			1,100,000
Monaghan County Council	3,100,000	3,100,000			3,100,000
Roscommon County Council	12,000,000	12,000,000			12,000,000
Sligo County Council	2,300,000	2,300,000			2,300,000
Tipperary County Council	1,025,000	1,025,000			1,025,000
Westmeath County Council	200,000	200,000			200,000
Wexford County Council	1,150,000	1,150,000			1,150,000
Total	142,285,000	142,285,000	54,540,000	54,540,000	196,825,000

TII - Grant Allocation to Local Authorities for National Roads and Greenways

Current Maintenance - Protection & Renewal

Payee ▲	Both NP/NS	National Primary	National Secondary	Current Maintenance - Protection & Renewal - Total
Carlow County Council	20,300	40,000	170,598	230,898
Cavan County Council	47,700	276,583	175,229	499,512
Clare County Council	24,200	119,123	458,717	602,040
Cork City Council	38,200	380,008		418,208
Cork County Council	93,000	556,563	640,530	1,290,093
Donegal County Council	76,600	605,298	413,901	1,095,799
Dun Laoghaire Rathdown County Council	10,000	448,599		458,599
Fingal County Council		342,000		342,000
Galway City Council	12,800	146,499	38,690	197,989
Galway County Council	62,000	316,807	669,551	1,048,358
Kerry County Council	78,200	298,560	698,128	1,074,888
Kildare County Council	10,000	328,675	71,702	410,377
Kilkenny County Council	43,000	320,835	252,798	616,633
Laois County Council	39,200	96,581	338,377	474,158
Leitrim County Council	35,800	299,430		335,230
Limerick City and County Council	47,400	496,316	137,185	680,901
Longford County Council	40,700	185,636	187,454	413,790
Louth County Council	35,200	142,671	90,767	268,638
Mayo County Council	86,600	534,776	655,091	1,276,467
Meath County Council	46,400	252,485	231,082	529,967
Monaghan County Council	35,200	359,148	114,115	508,463
Offaly County Council	21,800	9,117	375,095	406,012
Roscommon County Council	57,300	338,350	368,387	764,037
Sligo County Council	70,900	573,168	126,617	770,685
South Dublin County Council	14,500	427,500	108,320	550,320
Tipperary County Council	88,300	362,456	385,328	836,084
Waterford City and County Council	49,800	217,397	84,170	351,367
Westmeath County Council	35,000	235,454	323,935	594,389
Wexford County Council	28,000	491,624	33,670	553,294
Wicklow County Council	32,800	115,941	148,385	297,126
Total	1,280,900	9,317,600	7,297,822	17,896,322



TII - Grant Allocation to Local Authorities for National Roads and Greenways

PPP Payments



Classification	National Primary	PPP Payments - Total
Payee	Major B.1.4 - Nat	
Galway County Council	25,000	25,000
Total	25,000	25,000

TII - Grant Allocation to Local Authorities for National Roads and Greenways

Greenways

Payee ▲	Greenway - Nat	LA Eng Support - E7 - Nat	Greenways - Total
Carlow County Council	60,000		60,000
Cavan County Council	400,000	150,000	550,000
Clare County Council	2,030,000	100,000	2,130,000
Cork County Council	3,600,000	250,000	3,850,000
Donegal County Council	1,800,000	290,000	2,090,000
Fingal County Council	400,000	100,000	500,000
Galway County Council	4,200,000	450,000	4,650,000
Kerry County Council	6,200,000	250,000	6,450,000
Kildare County Council	3,900,000	200,000	4,100,000
Kilkenny County Council	100,000		100,000
Leitrim County Council	1,500,000	250,000	1,750,000
Limerick City and County Council	3,150,000	250,000	3,400,000
Longford County Council	372,000		372,000
Louth County Council	700,000		700,000
Mayo County Council	2,050,000	270,000	2,320,000
Meath County Council	1,164,000	200,000	1,364,000
Monaghan County Council	2,000,000	150,000	2,150,000
Offaly County Council	3,880,000		3,880,000
Roscommon County Council	1,300,000	280,000	1,580,000
Sligo County Council	400,000	390,000	790,000
South Dublin County Council	800,000	150,000	950,000
Tipperary County Council	1,150,000	250,000	1,400,000
Waterford City and County Council	500,000	200,000	700,000
Westmeath County Council	8,250,000	370,000	8,620,000
Wexford County Council	3,150,000	200,000	3,350,000
Wicklow County Council	2,550,000	250,000	2,800,000
Total	55,606,000	5,000,000	60,606,000



Overview per Local Authority

Carlow County Council

Total Allocation

2,088,898

C3.1.2 Allocation

1,798,000

Capital Investment - Protection & Renewal & Active Travel (AT)

Classification	PRS Type	Name	Route No:	Allocation (€)
Both NP/NS	HD15 and HD17 Minor Works 1a - Nat	Fencing Retrofit 2023 CW	-	10,000
	LA Eng Support - B.1.1a - Nat	Local Authority Support (Improvement) 2023 CW	-	110,000
National Secondary	HD15 and HD17 Minor Works 1a - Nat	N80CW O'Brien Road RSIS	80	5,000
		N80CW_Leagh Bends	80	120,000
	Pavement 1a - Nat	N80 Clonmacshane to Ballykealey	80	633,000
		N81 Bough to County Boundary	81	920,000
C3.1.2 Capital Investment - Protection & Renewal & Active Travel (AT) Total				1,798,000

Carlow County Council

Current Maintenance - Protection & Renewal

Total Allocation

2,088,898

C3.1.1 Allocation

230,898

Classification	PRS Type	Name	Allocation (€)
Both NP/NS	LA Eng Support - B.1.2	Local Authority Support (Maintenance) 2023 CW	10,300
		Local Authority Support (Winter Maintenance) 2023 CW	10,000
National Primary	Route Lighting	NP Motorway MMarC Lighting 2023 CW	40,000
National Secondary	Ordinary Maintenance	NS Ordinary Maintenance 2023 CW	69,243
	Route Lighting	NS Route Lighting 2023 CW	41,755
	Winter Maintenance	NS Winter Maintenance 2023 CW	59,600
C3.1.1 Current Maintenance - Protection & Renewal Total			230,898

Carlow County Council	Total Allocation	A.4.1 Allocation
Greenways	2,088,898	60,000

PRS Type	Name	Allocation (€)
Greenway - Nat	Barrow Valley - Bagenalstown to Palace East	60,000
A.4.1 Greenways Total		60,000

Cavan County Council

Capital Investment - Protection & Renewal & Active Travel (AT)

Total Allocation

24,494,512

C3.1.2 Allocation

21,445,000

Classification	PRS Type	Name	Route No:	Allocation (€)
Both NP/NS	HD15 and HD17 Minor Works 1a - Nat	Fencing Retrofit 2023 CN	-	20,000
	LA Eng Support - B.1.1a - Nat	Local Authority Support (Improvement) 2023 CN	-	550,000
National Primary	HD15 and HD17 Minor Works 1a - Nat	N03CN Drumsillagh RSIS	3	50,000
		N03CN Lisduff & Edenburt RSIS	3	5,000
		N03CN Virginia Main Street RSIS	3	50,000
		N3 Cavan Crystal Hotel-Kilmore Roundabout Safety Scheme	3	100,000
	Minor Works 1a - Nat	N3 Virginia-Maghera Safety Scheme	3	100,000
		N3 Dublin Road Roundabout (Minor 2016)	3	100,000
		N03 Pollamore to Kilmore Roundabout	3	100,000
	Pavement 1a - Nat	N3 Whitegate to Maghera	3	3,600,000
		NP Pavement Scheme Site Investigations 2023 CN	-	35,000
National Secondary	HD15 and HD17 Minor Works 1a - Nat	N55CN Cashel Cross RSIS	55	200,000
	Minor Works 1a - Nat	N55 Ballinagh Relief Road	55	300,000
		N55 Corduff to South of Killydoon - Section A	55	50,000
		N55 Corduff to South of Killydoon - Section B	55	10,000,000
	Pavement 1a - Nat	N54 Butlers Bridge to Border Phase 1	54	4,400,000
		N55 Cavan / Longford border	55	1,750,000
		NS Pavement Scheme Site Investigations 2023 CN	-	35,000

C3.1.2 Capital Investment - Protection & Renewal & Active Travel (AT) Total

21,445,000

Cavan County Council		Total Allocation 24,494,512	C3.3 Allocation 2,000,000	
Construction of New Roads				
Classification	PRS Type	Name	Route No:	Allocation (€)
National Primary	Major Scheme 1b - Nat	NDP - N3 Virginia Bypass	3	2,000,000
C3.3 Construction of New Roads Total				2,000,000

Cavan County Council

Total Allocation
24,494,512

C3.1.1 Allocation
499,512

Current Maintenance - Protection & Renewal

Classification	PRS Type	Name	Allocation (€)
Both NP/NS	LA Eng Support - B.1.2	Local Authority Support (Maintenance) 2023 CN	37,700
		Local Authority Support (Winter Maintenance) 2023 CN	10,000
National Primary	Ordinary Maintenance	NP Ordinary Maintenance 2023 CN	124,157
	Route Lighting	NP Route Lighting 2023 CN	32,926
	Winter Maintenance	NP Winter Maintenance 2023 CN	119,500
National Secondary	Ordinary Maintenance	NS Ordinary Maintenance 2023 CN	77,156
	Route Lighting	NS Route Lighting 2023 CN	28,473
	Winter Maintenance	NS Winter Maintenance 2023 CN	69,600
C3.1.1 Current Maintenance - Protection & Renewal Total			499,512

Cavan County Council	Total Allocation	A.4.1 Allocation
Greenways	24,494,512	550,000

PRS Type	Name	Allocation (€)
Greenway - Nat	Cavan Railway - Cavan Town UCG - Leitrim G/w at Belturbet	400,000
LA Eng Support - E7 - Nat	Local Authority Greenways Support -2023 CN	150,000
A.4.1 Greenways Total		550,000

Clare County Council



Capital Investment - Protection & Renewal & Active Travel (AT)

Total Allocation

5,869,840

C3.1.2 Allocation

3,137,800

Classification	PRS Type	Name	Route No:	Allocation (€)
Both NP/NS	LA Eng Support - B.1.1a - Nat	Local Authority Support (Improvement) 2023 CL	-	220,000
National Primary	AT: Minor Works 1a - Nat	AT - N18 Cycle/Walkway at Latoon Bridge	18	25,000
	Minor Works 1a - Nat	N19 Shannon Airport Access	19	500,000
National Secondary	HD15 and HD17 Minor Works 1a - Nat	N67CL Minister's Place RSI Implementation	67	200,000
		N67CL RSI Implementation 2022	67	50,000
		N85CL Clareabbey Roundabout pedestrian /cycle crossings RSIS	85	5,000
	Minor Works 1a - Nat	N67/N85 Blake's Corner	67	50,000
	Pavement 1a - Nat	N67 Cloonbony to Rinneen	67	878,200
		N67 Doonbeg	67	820,800
		N67 Lisdoonvarna	67	388,800
C3.1.2 Capital Investment - Protection & Renewal & Active Travel (AT) Total			3,137,800	

Clare County Council

Current Maintenance - Protection & Renewal

Total Allocation

5,869,840

C3.1.1 Allocation

602,040

Classification	PRS Type	Name	Allocation (€)
Both NP/NS	LA Eng Support - B.1.2	Local Authority Support (Maintenance) 2023 CL	14,200
		Local Authority Support (Winter Maintenance) 2023 CL	10,000
National Primary	Route Lighting	NP Motorway MMaRC Lighting 2023 CL	119,123
National Secondary	Ordinary Maintenance	NS Ordinary Maintenance 2023 CL	237,009
	Route Lighting	NS Route Lighting 2023 CL	62,208
	Winter Maintenance	NS Winter Maintenance 2023 CL	159,500
C3.1.1 Current Maintenance - Protection & Renewal Total			602,040

Clare County Council	Total Allocation	A.4.1 Allocation
Greenways	5,869,840	2,130,000

PRS Type	Name	Allocation (€)
Greenway - Nat	Ennis to Ennistymon	300,000
	Ennistymon to Milltown Malbay	100,000
	Limerick to Scarriff - O'Brien's Bridge to Scarriff	780,000
	Milltown Malbay to Moyasta	50,000
	Shannon to Bunratty & Onto Limerick	300,000
	West Clare Railway - Kilrush - Kilkee	500,000
LA Eng Support - E7 - Nat	Local Authority Greenways Support -2023 CL	100,000
A.4.1 Greenways Total		2,130,000

Cork City Council

Total Allocation

4,392,208

C3.1.2 Allocation

3,874,000

Capital Investment - Protection & Renewal & Active Travel (AT)

Classification	PRS Type	Name	Route No:	Allocation (€)
Both NP/NS	LA Eng Support - B.1.1a - Nat	Local Authority Support (Improvement) 2023 CB	-	200,000
National Primary	Major Scheme 1a - Nat	N40 TEN-T Route Improvements (Previously B1.1b CB/22/27492)	40	2,000,000
	Pavement 1a - Nat	N20 Lavitt's Quay to West Link Business Park Phase 1	20	764,000
		N28 Carr's Hill	28	910,000
C3.1.2 Capital Investment - Protection & Renewal & Active Travel (AT) Total				3,874,000

Cork City Council		Total Allocation 4,392,208	C3.3 Allocation 100,000	
Construction of New Roads				
Classification	PRS Type	Name	Route No:	Allocation (€)
National Primary	Major Scheme 1b - Nat	Cork City Northern Transport Project	40	100,000
C3.3 Construction of New Roads Total				100,000

Cork City Council

Current Maintenance - Protection & Renewal

Total Allocation

4,392,208

C3.1.1 Allocation

418,208

Classification	PRS Type	Name	Allocation (€)
Both NP/NS	LA Eng Support - B.1.2	Local Authority Support (Maintenance) 2023 CB	28,200
		Local Authority Support (Winter Maintenance) 2023 CB	10,000
National Primary	Ordinary Maintenance	NP Ordinary Maintenance 2023 CB	105,976
	Route Lighting	NP Motorway MMarC Lighting 2023 CB	73,432
		NP Route Lighting 2023 CB	139,300
	Winter Maintenance	NP Winter Maintenance 2023 CB	61,300
C3.1.1 Current Maintenance - Protection & Renewal Total			418,208

Cork County Council

Total Allocation

83,613,093

C3.1.2 Allocation

18,073,000

Capital Investment - Protection & Renewal & Active Travel (AT)

Classification	PRS Type	Name	Route No:	Allocation (€)	
Both NP/NS	HD15 and HD17 Minor Works 1a - Nat	Fencing Retrofit 2023 CC	-	25,000	
National Primary	LA Eng Support - B.1.1a - Nat	NRO Support (Improvement) 2023 CC	-	2,800,000	
	AT: Minor Works 1a - Nat	AT - M28 Ringaskiddy	28	100,000	
		AT - N22 Baile Bhuirne Macroom Active Travel	22	200,000	
		AT - N8 Dunkettle Waterfront Cycleway from Tivoli to Little Island	8	150,000	
	HD15 and HD17 Minor Works 1a - Nat	N20CC Charleville	20	5,000	
N22CC Ballyvourney ped crossing		22	3,000		
N22CC Castlemore RSIS		22	5,000		
National Secondary	Minor Works 1a - Nat	N25 Carrigtowhill to Midleton Minor scheme	25	100,000	
	Pavement 1a - Nat	N25 Loughaderra Lake - Design	25	50,000	
		N28 Shanbally	28	700,000	
		AT: Minor Works 1a - Nat	AT - N71 Glasslinn Road	71	500,000
	AT - N71 Glengarriff to National Park Cycle/walkway		71	150,000	
	HD15 and HD17 Minor Works 1a - Nat	N72CC Ballymaquirke Junction	72	1,800,000	
		N72CC Fermoy Christchurch	72	5,000	
		N72CC Grange Fermoy	72	30,000	
	Minor Works 1a - Nat	N71 Bandon Bypass Extension	71	150,000	
		N71 Cork Road (Skibbereen) Drainage Upgrade Minor Scheme	71	1,500,000	
		N71 Newmills/Owenahincha	71	150,000	
		N73 Annakisha South Improvement Scheme	73	3,000,000	
		N73 Clogher Cross - Waterdyke Realignment Scheme	73	1,540,000	
		Pavement 1a - Nat	N71 Ballylicky to Dromkeal	71	910,000
			N71 Seafield to Knockroe Pavement Repairs Phase 4 - Design	71	50,000
			N72 Castletownroche	72	1,000,000
			N72 Fermoy Town Phase 1	72	1,000,000
			N72 Kilmagner to Littlegrace Phase 1 - Design	72	50,000
	N72 Lyradown Phase 1		72	50,000	
	N72 Meenskeha		72	1,140,000	
N73 Ballyenaghan	73	910,000			
C3.1.2 Capital Investment - Protection & Renewal & Active Travel (AT) Total				18,073,000	

Cork County Council

Construction of New Roads

Total Allocation

83,613,093

C3.3 Allocation

60,400,000

Classification	PRS Type	Name	Route No:	Allocation (€)
National Primary	Major Scheme 1b - Nat	Ballyvourney to Macroom (bypasses Macroom)	22	39,000,000
		Dunkettle Interchange	40	1,500,000
		Midleton to Youghal - bypasses Castlemartyr (See CC/06/600)	25	800,000
		Ringaskiddy/Cork	28	19,000,000
National Secondary	Major Scheme 1b - Nat	N72/73 Mallow Relief Road	72	100,000
C3.3 Construction of New Roads Total				60,400,000

Cork County Council

Current Maintenance - Protection & Renewal

Total Allocation

83,613,093

C3.1.1 Allocation

1,290,093

Classification	PRS Type	Name	Allocation (€)
Both NP/NS	LA Eng Support - B.1.2	Local Authority Support (Maintenance) 2023 CC	83,000
		Local Authority Support (Winter Maintenance) 2023 CC	10,000
National Primary	Ordinary Maintenance	NP Ordinary Maintenance 2023 CC	243,348
		NP Motorway MMarC Lighting 2023 CC	48,300
	Route Lighting	NP Route Lighting 2023 CC	141,315
		NP Winter Maintenance 2023 CC	123,600
National Secondary	Ordinary Maintenance	NS Ordinary Maintenance 2023 CC	322,330
	Route Lighting	NS Route Lighting 2023 CC	143,700
	Winter Maintenance	NS Winter Maintenance 2023 CC	174,500
C3.1.1 Current Maintenance - Protection & Renewal Total			1,290,093

Cork County Council	Total Allocation	A.4.1 Allocation
Greenways	83,613,093	3,850,000
PRS Type	Name	Allocation (€)
Greenway - Nat	Charleville to Cork	50,000
	Mallow to Dungarvan Greenway	300,000
	Midleton to Youghal G/w - Midleton to Youghal	3,000,000
	Muskerry Greenway (Lee to Sea) - Macroom - Dripsey - Farran	50,000
	South Cork G/W - Cork to Kinsale	100,000
	West Cork G/W - Cork to Schull	100,000
LA Eng Support - E7 - Nat	NRO Regional Greenways Support -2023 CC	250,000
A.4.1 Greenways Total		3,850,000

Donegal County Council

▼

Total Allocation

24,393,799

C3.1.2 Allocation

13,818,000

Capital Investment - Protection & Renewal & Active Travel (AT)▼

Classification	PRS Type	Name	Route No:	Allocation (€)
Both NP/NS	Bridge Rehabilitation 1a - Nat	Donegal/Sligo Rehabilitation	-	250,000
	LA Eng Support - B.1.1a - Nat	Local Authority Support (Improvement) 2023 DL	-	115,000
		NRO Support (Improvement) 2023 DL	-	3,255,000
	Pavement 1a - Nat	Pavement Scheme Site Investigations 2023 DL	-	150,000
National Primary	HD15 and HD17 Minor Works 1a - Nat	N13DL Magherabeg RSIS	13	5,000
		N13DL Magherabeg (SRTS) Pilot	13	20,000
		N14 RSI Improvements (Feddyglass)	14	650,000
		N14DL Doorable RSIS	14	50,000
		N15 Ballybofey HVC Pilot 2022	15	75,000
		N15DL Killygordon Footpath	15	100,000
		N15DL Lough Mourne RSIS	15	70,000
		N15DL_054.0 Laghey Roundabout RSIS	15	150,000
		N3DL Lisschully RSIS	3	100,000
		Minor Works 1a - Nat	N13 Bridgend	13
	N15 Corcam Bends		15	200,000
	N15 McGroary's Brae Improvement Scheme		15	1,000,000
	Pavement 1a - Nat		N14 Tullyrap to Ballyholey	14
	National Secondary	AT: Minor Works 1a - Nat	AT - N56 Letterkenny Urban	56
HD15 and HD17 Minor Works 1a - Nat		HD15: N56 Four-Lane, Letterkenny	56	1,000,000
		N56DL Kilraine RSIS	56	3,000
		N56DL RSI Implementation 2022	56	100,000
Minor Works 1a - Nat		DoT/DCC Letterkenny Traffic Management Project : TII Contribution	56	200,000
		N56 Doonwell to Drumbrick	56	100,000
		N56 Gortahork to Falcarragh	56	50,000
Pavement 1a - Nat		N56 Creeslough Village to Cashelmore	56	1,400,000
		N56 Four-Lane, Letterkenny - Pavement	56	650,000
		N56 Mountain Top to Illistrin - Pavement Scheme	56	1,225,000
	N56 North of Termon	56	950,000	
C3.1.2 Capital Investment - Protection & Renewal & Active Travel (AT) Total				13,818,000

Donegal County Council

Construction of New Roads

Total Allocation
24,393,799

C3.3 Allocation
7,390,000

Classification ▲	PRS Type	Name	Route No:	Allocation (€)
National Primary	Major Scheme 1b - Nat	N13 Letterkenny Roundabout	13	50,000
		TEN-T Route Improvement	13	1,500,000
National Secondary	Major Scheme 1b - Nat	Dungloe to Glenties	56	140,000
		Mountcharles to Inver	56	20,000
		N56 Drumbeigh to Inver	56	50,000
		N56 Dungloe to Cloghbolie	56	400,000
		N56 Kilkenny to Letterilly	56	230,000
		N56 Letterilly to Kilraine Junction	56	4,000,000
		N56 Letterilly to Kilraine Junction Phase 2	56	1,000,000
C3.3 Construction of New Roads Total				7,390,000

Donegal County Council

Current Maintenance - Protection & Renewal

Total Allocation

24,393,799

C3.1.1 Allocation

1,095,799

Classification	PRS Type	Name	Allocation (€)
Both NP/NS	LA Eng Support - B.1.2	Local Authority Support (Maintenance) 2023 DL	66,600
		Local Authority Support (Winter Maintenance) 2023 DL	10,000
National Primary	Ordinary Maintenance	NP Ordinary Maintenance 2023 DL	293,292
	Route Lighting	NP Route Lighting 2023 DL	37,406
	Winter Maintenance	NP Winter Maintenance 2023 DL	274,600
National Secondary	Ordinary Maintenance	NS Ordinary Maintenance 2023 DL	201,895
	Route Lighting	NS Route Lighting 2023 DL	37,406
	Winter Maintenance	NS Winter Maintenance 2023 DL	174,600
C3.1.1 Current Maintenance - Protection & Renewal Total			1,095,799

Donegal County Council

Greenways

Total Allocation

24,393,799

A.4.1 Allocation

2,090,000

PRS Type	Name	Allocation (€)
Greenway - Nat	Barnesmore Gap Greenway	350,000
	Burtonport to Letterkenny Greenway	400,000
	Carrigans to Lifford GW	100,000
	Inishowen - Buncrana - Carndonagh	500,000
	Inishowen G/w - Bridgend to Buncrana & Newtowncunningham	400,000
	Inishowen GW - Three Trees to Cardonagh	50,000
LA Eng Support - E7 - Nat	NRO Regional Greenways Support -2023 DL	290,000
A.4.1 Greenways Total		2,090,000

Dun Laoghaire Rathdown County Council

Total Allocation

C3.1.1 Allocation

458,599

458,599

Current Maintenance - Protection & Renewal

Classification	PRS Type	Name	Allocation (€)
Both NP/NS National Primary	LA Eng Support - B.1.2	Local Authority Support (Winter Maintenance) 2023 DR	10,000
	Ordinary Maintenance	NP Ordinary Maintenance 2023 DR	45,352
	Route Lighting	NP Motorway MMaRC Lighting 2023 DR	368,347
	Winter Maintenance	NP Winter Maintenance 2023 DR	34,900
C3.1.1 Current Maintenance - Protection & Renewal Total			458,599

Fingal County Council

Capital Investment - Protection & Renewal & Active Travel (AT)

Total Allocation

1,392,000

C3.1.2 Allocation

50,000

Classification	PRS Type	Name	Route No:	Allocation (€)
National Primary	Minor Works 1a - Nat	N1 Lissenhall Junction Traffic Study	1	50,000
C3.1.2 Capital Investment - Protection & Renewal & Active Travel (AT) Total				50,000

Fingal County Council		Total Allocation 1,392,000	C3.3 Allocation 500,000	
Construction of New Roads				
Classification	PRS Type	Name	Route No:	Allocation (€)
National Primary	Major Scheme 1b - Nat	NDP - N3 M50 to Clonee	3	500,000
C3.3 Construction of New Roads Total				500,000

Fingal County Council		Total Allocation	C3.1.1 Allocation
Current Maintenance - Protection & Renewal		1,392,000	342,000
Classification	PRS Type	Name	Allocation (€)
National Primary	Route Lighting	NP Motorway MMaRC Lighting 2023 FG	342,000
C3.1.1 Current Maintenance - Protection & Renewal Total			342,000

Fingal County Council	Total Allocation	A.4.1 Allocation
Greenways	1,392,000	500,000

PRS Type	Name	Allocation (€)
Greenway - Nat	Fingal Coastal Way - Donabate - Fingal Co. Bdy N of Balbriggan	400,000
LA Eng Support - E7 - Nat	Local Authority Greenways Support -2023 FG	100,000
A.4.1 Greenways Total		500,000

Galway City Council



Capital Investment - Protection & Renewal & Active Travel (AT)

Total Allocation

647,989

C3.1.2 Allocation

450,000

Classification	PRS Type	Name	Route No:	Allocation (€)
Both NP/NS	LA Eng Support - B.1.1a - Nat	Local Authority Support (Improvement) 2023 GB	-	50,000
National Primary	Minor Works 1a - Nat	N6 Bothar na dTreabh Improvement	6	400,000
C3.1.2 Capital Investment - Protection & Renewal & Active Travel (AT) Total				450,000

Galway City Council

Current Maintenance - Protection & Renewal

Total Allocation

647,989

C3.1.1 Allocation

197,989

Classification	PRS Type	Name	Allocation (€)
Both NP/NS	LA Eng Support - B.1.2	Local Authority Support (Maintenance) 2023 GB	12,800
	Ordinary Maintenance	NP Ordinary Maintenance 2023 GB	80,399
	Route Lighting	NP Route Lighting 2023 GB	31,200
	Winter Maintenance	NP Winter Maintenance 2023 GB	34,900
National Primary	Ordinary Maintenance	NS Ordinary Maintenance 2023 GB	12,490
	Route Lighting	NS Route Lighting 2023 GB	16,200
	Winter Maintenance	NS Winter Maintenance 2023 GB	10,000
C3.1.1 Current Maintenance - Protection & Renewal Total			197,989

Galway County Council

Capital Investment - Protection & Renewal & Active Travel (AT)

Total Allocation

44,566,418

C3.1.2 Allocation

10,443,060

Classification	PRS Type	Name	Route No:	Allocation (€)
Both NP/NS	Bridge Rehabilitation 1a - Nat	Galway Bridge Rehabilitation	-	250,000
	HD15 and HD17 Minor Works 1a - Nat	Fencing Retrofit 2022 GC	-	20,000
	LA Eng Support - B.1.1a - Nat	Local Authority Support (Improvement) 2023 GC	-	284,560
National Primary	Minor Works 1a - Nat	NRO Support (Improvement) 2023 GC	-	1,721,000
		N17 Milltown to Gortnagunnad Realignment (Minor 2016)	17	300,000
National Secondary	AT: Minor Works 1a - Nat	AT - N63 Abbeyknockmoy Village	63	200,000
		AT - N67 Clarinbridge to Oranmore	67	80,000
		AT - N67 Kinvara Village	67	300,000
		AT - N67 South of Ballinderreen Cycleway	67	85,000
		Bridge Rehabilitation 1a - Nat	59	1,000,000
	HD15 and HD17 Minor Works 1a - Nat	N59 Oughterard Bridge	59	250,000
		N59 Pedestrian Crossing in Oughterard (Bridge Controlled Crossings)	59	250,000
		N59GC_295 Kentfield	59	15,000
		N67GC_Carrowmoneash Pedestrian Crossing Feasibility Study	67	37,500
		N83 Claregalway Traffic Calming & Pavement Restoration	83	1,000,000
	Minor Works 1a - Nat	N83GC RSI Implementation 2023	83	100,000
		N83GC_010 Carrowmunnigh Road Widening	83	200,000
		N84 GC RSI Implementation 2022	84	140,000
		N59 Bunnakil to Claremount	59	500,000
		N63 Abbeyknockmoy to Annagh (Part of Gort/Tuam Residual Network)	63	100,000
		N63 Liss to Abbey Realignment (Minor 2016)	63	200,000
		N65 Kilmeen Cross	65	50,000
		N84 Galway to Curraghmore	84	100,000
	Pavement 1a - Nat	N59 Crocknaraw	59	350,000
		N59 Derrynacleigh	59	1,080,000
		N65 Killimor to Ramore Cross	65	880,000
		N83 Claregalway	83	1,200,000

C3.1.2 Capital Investment - Protection & Renewal & Active Travel (AT) Total

10,443,060

Galway County Council

Construction of New Roads

Total Allocation

44,566,418

C3.3 Allocation

28,400,000

Classification	PRS Type	Name	Route No:	Allocation (€)
National Primary	Major Scheme 1b - Nat	Galway City By-Pass	6	3,000,000
National Secondary	Major Scheme 1b - Nat	Clifden to Oughterard	59	400,000
		Moycullen Bypass	59	25,000,000
C3.3 Construction of New Roads Total				28,400,000

Galway County Council

Current Maintenance - Protection & Renewal

Total Allocation

44,566,418

C3.1.1 Allocation

1,048,358

Classification	PRS Type	Name	Allocation (€)
Both NP/NS	LA Eng Support - B.1.2	Local Authority Support (Maintenance) 2023 GC	52,000
		Local Authority Support (Winter Maintenance) 2023 GC	10,000
National Primary	Ordinary Maintenance	NP Ordinary Maintenance 2023 GC	150,716
		NP Motorway MMarCLighting 2023 GC	9,562
	Route Lighting	NP Route Lighting 2023 GC	36,929
		NP Winter Maintenance 2023 GC	119,600
National Secondary	Ordinary Maintenance	NS Ordinary Maintenance 2023 GC	352,777
	Route Lighting	NS Route Lighting 2023 GC	67,174
	Winter Maintenance	NS Winter Maintenance 2023 GC	249,600
C3.1.1 Current Maintenance - Protection & Renewal Total			1,048,358

Galway County Council		Total Allocation		C3.4 Allocation
PPP Payments		44,566,418		25,000
Classification	PRS Type	Name	Route No:	Allocation (€)
▲				
National Primary	Major B.1.4 - Nat	Gort to Tuam	17	25,000
C3.4 PPP Payments Total				25,000

Galway County Council

Greenways

Total Allocation

44,566,418

A.4.1 Allocation

4,650,000

PRS Type	Name	Allocation (€)
Greenway - Nat	Athenry to Milltown	300,000
	Connemara - Clifden to Recess	2,500,000
	Connemara - Derrygimlagh - Clifden - Kylemore Abbey	200,000
	Connemara - Galway to Oughterard	1,200,000
LA Eng Support - E7 - Nat	NCN - Galway to Athlone Cycleway - NRO Support GC	250,000
	NRO Regional Greenways Support -2023 GC	200,000
A.4.1 Greenways Total		4,650,000

Kerry County Council

Total Allocation

44,985,108

C3.1.2 Allocation

15,060,220

Capital Investment - Protection & Renewal & Active Travel (AT)

Classification	PRS Type	Name	Route No:	Allocation (€)	
Both NP/NS	Bridge Rehabilitation 1a - Nat	Kerry and Cork City Bridges VRS and Expansion Joints	-	880,000	
		Kerry Bridge Rehabilitation	-	250,000	
		Kerry Retaining Walls	-	500,000	
		Kerry, Cork and Limerick Bridge Rehabilitation 2021	-	125,000	
	HD15 and HD17 Minor Works 1a - Nat	Fencing Retrofit 2022 KY	-	100,000	
	LA Eng Support - B.1.1a - Nat	Local Authority Support (Improvement) 2023 KY	-	200,000	
		NRO Support (Improvement) 2023 KY	-	2,350,000	
National Primary	HD15 and HD17 Minor Works 1a - Nat	N22KY_087.7 Aghadoe Junction	22	5,000	
		Sfty - N21KY RSI Implementation	21	67,000	
	Minor Works 1a - Nat	N22 Lewis Road Junction	22	200,000	
	Pavement 1a - Nat	N22 Garries Bridge	22	200,000	
		N22 Park Road Roundabout to Ballyspillane	22	1,200,000	
National Secondary	AT: Minor Works 1a - Nat	AT - N70 Parknasilla to Sneem	70	150,000	
		AT - N70 Tinnahaly - Killorglin	70	150,000	
		AT - N71 Dinis to Torc	71	50,000	
		AT - N71 Torc to Muckcross	71	150,000	
		AT - N72 Fossa Killarney	72	500,000	
		AT - N72 Killorglin Approaches (Anglont)	72	450,000	
	HD15 and HD17 Minor Works 1a - Nat	N71KY Killarney Muckcross Rd RSIS	71	10,000	
		N72KY Fossa village RSIS	72	500,000	
	Minor Works 1a - Nat	Blackwater Bridge to Sneem	70	500,000	
		Kilderry Bends Improvement Scheme	70	50,000	
		N70 Brackaharagh	70	100,000	
		N70 Coolroe to Glenbehy	70	100,000	
		N70 Creamery Cross	70	200,000	
		N70 Milltown Castlemaine	70	100,000	
		N70 Waterville to Ballybrack	70	200,000	
		N72 Stagmount	72	50,000	
		N86 Ballynasare & Ballygarret	86	2,500,000	
		Pavement 1a - Nat	N70 Creamery Cross to Kenneigh Phase 1	70	1,150,000
			N72 Killalee	72	350,000
	N72 Killorglin Pavement Improvement Works		72	203,220	
		N86 Dingle Town	86	1,520,000	
C3.1.2 Capital Investment - Protection & Renewal & Active Travel (AT) Total				15,060,220	

Kerry County Council

Construction of New Roads

Total Allocation

44,985,108

C3.3 Allocation

22,400,000

Classification	PRS Type	Name	Route No:	Allocation (€)
National Primary	Major Scheme 1b - Nat	NDP - N22 Farranfore to Killarney (bypasses Farranfore & Killarney)	22	100,000
National Secondary	Major Scheme 1b - Nat	Listowel Bypass	69	22,000,000
		Tralee to An Daingean	86	300,000
C3.3 Construction of New Roads Total				22,400,000

Kerry County Council

Current Maintenance - Protection & Renewal

Total Allocation

44,985,108

C3.1.1 Allocation

1,074,888

Classification	PRS Type	Name	Allocation (€)
Both NP/NS	LA Eng Support - B.1.2	Local Authority Support (Maintenance) 2023 KY	68,200
		Local Authority Support (Winter Maintenance) 2023 KY	10,000
National Primary	Ordinary Maintenance	NP Ordinary Maintenance 2023 KY	178,417
	Route Lighting	NP Route Lighting 2023 KY	45,543
	Winter Maintenance	NP Winter Maintenance 2023 KY	74,600
National Secondary	Ordinary Maintenance	NS Ordinary Maintenance 2023 KY	421,519
	Route Lighting	NS Route Lighting 2023 KY	127,109
	Winter Maintenance	NS Winter Maintenance 2023 KY	149,500
C3.1.1 Current Maintenance - Protection & Renewal Total			1,074,888

Kerry County Council

Greenways

Total Allocation

44,985,108

A.4.1 Allocation

6,450,000

PRS Type	Name	Allocation (€)
Greenway - Nat	Cockleshell Road to The Spa Greenway	400,000
	N Kerry - Listowel to Limerick Border	500,000
	N Kerry - Tralee to Fenit	500,000
	New Greenway Schemes Assessment - KY	50,000
	South Kerry - Stage 1 - Cahirsiveen to Reenard pt	100,000
	South Kerry - Stages 2 & 3 - Glenbeigh to Cahersiveen	4,500,000
	Sth Kerry G/w connection into Nth Kerry G/w	50,000
	Tralee to Listowel	100,000
LA Eng Support - E7 - Nat	NRO Regional Greenways Support -2023 KY	250,000
A.4.1 Greenways Total		6,450,000

Kildare County Council

Capital Investment - Protection & Renewal & Active Travel (AT)

Total Allocation

15,880,377

C3.1.2 Allocation

10,910,000

Classification	PRS Type	Name	Route No:	Allocation (€)
Both NP/NS	Bridge Rehabilitation 1a - Nat	Leinster Bridge Rehabilitation 2020	-	400,000
		Leinster Bridge Rehabilitation 2021	-	1,000,000
		Leinster Bridges Waterproofing and Maintenance Painting Contracts KE	-	4,860,000
		Wexford Bridge Rehabilitation 2020	-	1,000,000
National Primary	LA Eng Support - B.1.1a - Nat	NRO Support (Improvement) 2023 KE	-	2,750,000
	Minor Works 1a - Nat	M4 Bus Priority Measures	4	630,000
National Secondary	Bridge Rehabilitation 1a - Nat	N78 Castlecomer Footbridge	78	100,000
	HD15 and HD17 Minor Works 1a - Nat	N78 Athy RSIS	78	20,000
	Pavement 1a - Nat	N78 Athy Main Street Pavement	78	150,000
C3.1.2 Capital Investment - Protection & Renewal & Active Travel (AT) Total				10,910,000

Kildare County Council		Total Allocation 15,880,377	C3.3 Allocation 460,000	
Construction of New Roads				
Classification	PRS Type	Name	Route No:	Allocation (€)
National Primary	Major Scheme 1b - Nat	Naas Newbridge Bypass Upgrade	7	460,000
C3.3 Construction of New Roads Total				460,000

Kildare County Council

Total Allocation

C3.1.1 Allocation

15,880,377

410,377

Current Maintenance - Protection & Renewal

Classification	PRS Type	Name	Allocation (€)
Both NP/NS	LA Eng Support - B.1.2	Local Authority Support (Winter Maintenance) 2023 KE	10,000
National Primary	Route Lighting	NP Motorway MMaRC Lighting 2023 KE	328,675
National Secondary	Ordinary Maintenance	NS Ordinary Maintenance 2023 KE	22,386
	Route Lighting	NS Route Lighting 2023 KE	9,816
	Winter Maintenance	NS Winter Maintenance 2023 KE	39,500
C3.1.1 Current Maintenance - Protection & Renewal Total			410,377

Kildare County Council	Total Allocation	A.4.1 Allocation
Greenways	15,880,377	4,100,000
PRS Type	Name	Allocation (€)
Greenway - Nat	Grand Canal - Aylmer Bridge to Sallins	3,500,000
	Grand Canal - Sallins Bridge - Clonkeen (Co. Offaly Border)	400,000
LA Eng Support - E7 - Nat	Local Authority Greenways Support -2023 KE	200,000
A.4.1 Greenways Total		4,100,000

Kilkenny County Council

Capital Investment - Protection & Renewal & Active Travel (AT)

Total Allocation

11,995,283

C3.1.2 Allocation

9,278,650

Classification	PRS Type	Name	Route No:	Allocation (€)
Both NP/NS	HD15 and HD17 Minor Works 1a - Nat	Fencing Retrofit 2023 KK	-	25,000
	LA Eng Support - B.1.1a - Nat	Local Authority Support (Improvement) 2023 KK	-	230,000
National Primary	HD15 and HD17 Minor Works 1a - Nat	N24KK_100.0 Tower Road	24	5,000,000
	Minor Works 1a - Nat	N24 Carrick Road Improvement (Minor 2016)	24	100,000
National Secondary	HD15 and HD17 Minor Works 1a - Nat	N78KK Castlecomer RSIS	78	20,000
		N78KK Castlecomer RTL (RSI)	78	10,000
	Minor Works 1a - Nat	N77 Ballyragget Village to Ballynaslee Road Improvement (Minor 2016)	77	750,000
	Pavement 1a - Nat	N76 Callan Bypass	76	2,000,000
		N77 George's Tree to Dunmore West	77	883,000
		N77 Knockroe	77	260,650
C3.1.2 Capital Investment - Protection & Renewal & Active Travel (AT) Total				9,278,650

Kilkenny County Council

Construction of New Roads

Total Allocation
11,995,283

C3.3 Allocation
2,000,000

Classification	PRS Type	Name	Route No:	Allocation (€)
National Primary	Major Scheme 1b - Nat	NDP - N24 Waterford to Cahir	24	2,000,000
C3.3 Construction of New Roads Total				2,000,000

Kilkenny County Council

Current Maintenance - Protection & Renewal

Total Allocation

11,995,283

C3.1.1 Allocation

616,633

Classification	PRS Type	Name	Allocation (€)
Both NP/NS	LA Eng Support - B.1.2	Local Authority Support (Maintenance) 2023 KK	33,000
		Local Authority Support (Winter Maintenance) 2023 KK	10,000
National Primary	Ordinary Maintenance	NP Ordinary Maintenance 2023 KK	105,708
		NP Motorway MMarC Lighting 2023 KK	46,892
	Route Lighting	NP Route Lighting 2023 KK	38,735
		NP Winter Maintenance 2023 KK	129,500
National Secondary	Ordinary Maintenance	NS Ordinary Maintenance 2023 KK	84,962
	Route Lighting	NS Route Lighting 2023 KK	68,336
	Winter Maintenance	NS Winter Maintenance 2023 KK	99,500
C3.1.1 Current Maintenance - Protection & Renewal Total			616,633

Kilkenny County Council	Total Allocation	A.4.1 Allocation
Greenways	11,995,283	100,000

PRS Type	Name	Allocation (€)
Greenway - Nat	Inistioge (Woodstock Estate) to New Ross (South East Greenway)	100,000
A.4.1 Greenways Total		100,000

Laois County Council

Total Allocation

5,274,158

C3.1.2 Allocation

4,800,000

Capital Investment - Protection & Renewal & Active Travel (AT)

Classification	PRS Type	Name	Route No:	Allocation (€)
Both NP/NS	LA Eng Support - B.1.1a - Nat	Local Authority Support (Improvement) 2023 LS	-	100,000
National Secondary	Pavement 1a - Nat	N77 Course to Dunmore	77	300,000
		N77 Portlaoise to M7 Pavement	77	900,000
		N78 Ballylehane Lower to Farnans	78	1,000,000
		N80 Kyletalesha to Mountmellick Phase 2	80	2,500,000
C3.1.2 Capital Investment - Protection & Renewal & Active Travel (AT) Total				4,800,000

Laois County Council

Total Allocation

C3.1.1 Allocation

5,274,158

474,158

Current Maintenance - Protection & Renewal

Classification	PRS Type	Name	Allocation (€)
Both NP/NS	LA Eng Support - B.1.2	Local Authority Support (Maintenance) 2023 LS	29,200
		Local Authority Support (Winter Maintenance) 2023 LS	10,000
National Primary	Route Lighting	NP Motorway MMarC Lighting 2023 LS	96,581
National Secondary	Ordinary Maintenance	NS Ordinary Maintenance 2023 LS	128,967
	Route Lighting	NS Route Lighting 2023 LS	59,910
	Winter Maintenance	NS Winter Maintenance 2023 LS	149,500
C3.1.1 Current Maintenance - Protection & Renewal Total			474,158

Leitrim County Council

Total Allocation

7,098,230

C3.1.2 Allocation

2,513,000

Capital Investment - Protection & Renewal & Active Travel (AT)

Classification	PRS Type	Name	Route No:	Allocation (€)
Both NP/NS	HD15 and HD17 Minor Works 1a - Nat	Fencing Retrofit 2023 LM	-	50,000
	LA Eng Support - B.1.1a - Nat	Local Authority Support (Improvement) 2023 LM	-	213,000
National Primary	HD15 and HD17 Minor Works 1a - Nat	N15 Tullaghan Traffic Calming Type D RSIS	15	200,000
		N16LM Strabrick RSI Implementation	16	100,000
	Minor Works 1a - Nat	N16 Drummahan	16	500,000
		N16 Munakill Realignment (Minor 2016)	16	250,000
	Pavement 1a - Nat	N16 Manorhamilton to Cornacloy Phase 1	16	600,000
		N16 Manorhamilton to Cornacloy Phase 2	16	600,000
C3.1.2 Capital Investment - Protection & Renewal & Active Travel (AT) Total				2,513,000

Leitrim County Council	Total Allocation	C3.3 Allocation
Construction of New Roads	7,098,230	2,500,000

Classification	PRS Type	Name	Route No:	Allocation (€)
National Primary	Major Scheme 1b - Nat	NDP - N4 Carrick-on-Shannon to Dromod (bypasses Drumsna)	4	2,500,000
C3.3 Construction of New Roads Total				2,500,000

Leitrim County Council

Total Allocation

7,098,230

C3.1.1 Allocation

335,230

Current Maintenance - Protection & Renewal

Classification	PRS Type	Name	Allocation (€)
Both NP/NS	LA Eng Support - B.1.2	Local Authority Support (Maintenance) 2023 LM	25,800
		Local Authority Support (Winter Maintenance) 2023 LM	10,000
National Primary	Ordinary Maintenance	NP Ordinary Maintenance 2023 LM	115,507
	Route Lighting	NP Route Lighting 2023 LM	44,423
	Winter Maintenance	NP Winter Maintenance 2023 LM	139,500
C3.1.1 Current Maintenance - Protection & Renewal Total			335,230

Leitrim County Council	Total Allocation	A.4.1 Allocation
Greenways	7,098,230	1,750,000

PRS Type	Name	Allocation (€)
Greenway - Nat	SLNCR - Sligo Town to Blacklion, Co. Cavan	1,500,000
LA Eng Support - E7 - Nat	Local Authority Greenways Support -2023 LM	250,000
A.4.1 Greenways Total		1,750,000

Limerick City and County Council



Capital Investment - Protection & Renewal & Active Travel (AT)

Total Allocation
26,690,901

C3.1.2 Allocation
12,710,000

Classification	PRS Type	Name	Route No:	Allocation (€)
Both NP/NS	HD15 and HD17 Minor Works 1a - Nat	Fencing Retrofit 2023 L	-	25,000
	LA Eng Support - B.1.1a - Nat	Local Authority Support (Improvement) 2023 L	-	30,000
		NRO Support (Improvement) 2023 L	-	2,325,000
		Pavement 1a - Nat	NP/NS Pavement Scheme Site Investigations 2023 L	-
National Primary	HD15 and HD17 Minor Works 1a - Nat	N21L Abbeyfeal RSIS	21	2,000,000
		N21L Murphy's Cross	21	70,000
		N24L Killonan Cross RSIS	24	10,000
		Sfty - N21L RSI Implementation	21	30,000
		Sfty - N21L Wards Cross RSIS	21	20,000
	Minor Works 1a - Nat	M7 Junction 28 Feasibility Study (Minor 2016)	7	50,000
		N20 Rourke's Cross	20	500,000
		N24 Beary's Cross	24	2,000,000
	Pavement 1a - Nat	N21 Abbeyfeale to Mount Mahon Pavement Strengthening	21	1,000,000
		N21 Abbeyfeale Town Pavement	21	1,000,000
National Secondary	HD15 and HD17 Minor Works 1a - Nat	N69L RSI Implemenation 2022	69	100,000
		Sfty - N69L Bolands Cross RSIS	69	500,000
		Sfty - N69L RSI Implementation	69	500,000
	Pavement 1a - Nat	N69 Hegarty's Cross to Askeaton By-Pass. (Phase 2)	69	2,500,000

C3.1.2 Capital Investment - Protection & Renewal & Active Travel (AT) Total 12,710,000

Limerick City and County Council



Total Allocation

26,690,901

C3.3 Allocation

9,900,000

Construction of New Roads



Classification	PRS Type	Name	Route No:	Allocation (€)
National Primary	Major Scheme 1b - Nat	Foynes Limerick	21	2,000,000
		NDP - M20 Limerick to Cork	20	5,000,000
		NDP - N21 Abbeyfeale Relief Road	21	1,450,000
		NDP - N21 Newcastle West Relief Road	21	1,450,000
C3.3 Construction of New Roads Total				9,900,000

Limerick City and County Council

Current Maintenance - Protection & Renewal

Total Allocation

26,690,901

C3.1.1 Allocation

680,901

Classification	PRS Type	Name	Allocation (€)
Both NP/NS	LA Eng Support - B.1.2	Local Authority Support (Maintenance) 2023 L	37,400
		Local Authority Support (Winter Maintenance) 2023 L	10,000
National Primary	Ordinary Maintenance	NP Ordinary Maintenance 2023 L	202,876
		NP Motorway MMarC Lighting 2023 L	55,824
	Route Lighting	NP Route Lighting 2023 L	78,116
		NP Winter Maintenance 2023 L	159,500
National Secondary	Ordinary Maintenance	NS Ordinary Maintenance 2023 L	66,044
	Route Lighting	NS Route Lighting 2023 L	21,641
	Winter Maintenance	NS Winter Maintenance 2023 L	49,500
C3.1.1 Current Maintenance - Protection & Renewal Total			680,901

Limerick City and County Council	Total Allocation	A.4.1 Allocation
Greenways	26,690,901	3,400,000

PRS Type	Name	Allocation (€)
Greenway - Nat	Charleville to Patrickswell	200,000
	Limerick G/W - Patrickswell to Colbert Station	25,000
	Limerick G/w - Rathkeale - Adare - Patrick's Well	25,000
	Limerick Greenway - Rathkeale to Abbeyfeale	2,500,000
	UL Loop - UL to Montpelier via Castleconnell	400,000
LA Eng Support - E7 - Nat	NRO Regional Greenways Support -2023 L	250,000
A.4.1 Greenways Total		3,400,000

Longford County Council

Capital Investment - Protection & Renewal & Active Travel (AT)

Total Allocation

6,660,790

C3.1.2 Allocation

5,875,000

Classification	PRS Type	Name	Route No:	Allocation (€)
Both NP/NS	LA Eng Support - B.1.1a - Nat	Local Authority Support (Improvement) 2023 LD	-	213,000
National Primary	HD15 and HD17 Minor Works 1a - Nat	N4LD Edgewordstown Ped crossing	4	1,000
		N4LD Newtownforbes- Ped Crossing (SRTS)	4	1,000
		N4LD_Sraid RSIS	4	5,000
National Secondary	HD15 and HD17 Minor Works 1a - Nat	N55LD_058.2 Ballymahon-Toome RSIS	55	5,000
		N55LD_Ballymahon RSIS	55	10,000
		N63LD Farranyoogan RSI Implementation	63	10,000
		N63LD_001.9 Majors Well	63	1,000,000
	Minor Works 1a - Nat	N55 Ballymahon Traffic Management	55	500,000
	Pavement 1a - Nat	N55 Ballymahon Street Pavement Strengthening	55	1,000,000
		N55 Edgeworthstown North	55	480,000
		N63 Agnaskea Bridge	63	750,000
		N63 Farranyoogan	63	1,300,000
		N63 Gowlan Pavement	63	600,000

C3.1.2 Capital Investment - Protection & Renewal & Active Travel (AT) Total 5,875,000

Longford County Council

Total Allocation

6,660,790

C3.1.1 Allocation

413,790

Current Maintenance - Protection & Renewal

Classification	PRS Type	Name	Allocation (€)
Both NP/NS	LA Eng Support - B.1.2	Local Authority Support (Maintenance) 2023 LD	30,700
		Local Authority Support (Winter Maintenance) 2023 LD	10,000
National Primary	Ordinary Maintenance	NP Ordinary Maintenance 2023 LD	83,845
	Route Lighting	NP Route Lighting 2023 LD	32,291
	Winter Maintenance	NP Winter Maintenance 2023 LD	69,500
National Secondary	Ordinary Maintenance	NS Ordinary Maintenance 2023 LD	72,318
	Route Lighting	NS Route Lighting 2023 LD	55,636
	Winter Maintenance	NS Winter Maintenance 2023 LD	59,500
C3.1.1 Current Maintenance - Protection & Renewal Total			413,790

Longford County Council	Total Allocation	A.4.1 Allocation
Greenways	6,660,790	372,000

PRS Type	Name	Allocation (€)
Greenway - Nat	Mid Shannon Wilderness - Corlea Bog	50,000
	Mid Shannon Wilderness - Kilnacarrow Br.- Darogue/Ballymacormack	150,000
	Royal Canal Branch Line- Kilashee to Longford Town	172,000
A.4.1 Greenways Total		372,000

Louth County Council

Total Allocation

2,353,638

C3.1.2 Allocation

1,035,000

Capital Investment - Protection & Renewal & Active Travel (AT)

Classification	PRS Type	Name	Route No:	Allocation (€)
Both NP/NS	LA Eng Support - B.1.1a - Nat	Local Authority Support (Improvement) 2023 LH	-	128,000
National Primary	HD15 and HD17 Minor Works 1a - Nat	N02LH Castle Street Ardee	2	5,000
		N2LH Collon RSIS	2	60,000
		N2LH R169 Junction RSIS	2	10,000
		N2 Funshog	2	90,000
National Secondary	Minor Works 1a - Nat	N53 Hackballscross to Rassan (Minor 2016)	53	500,000
	Pavement 1a - Nat	N52 Ballygowan	52	242,000
C3.1.2 Capital Investment - Protection & Renewal & Active Travel (AT) Total				1,035,000

Louth County Council		Total Allocation		C3.3 Allocation	
Construction of New Roads		2,353,638		350,000	
Classification	PRS Type	Name	Route No:	Allocation (€)	
▲					
National Secondary	Major Scheme 1b - Nat	Ardee By-Pass (N52)	52	350,000	
C3.3 Construction of New Roads Total				350,000	

Louth County Council



Total Allocation

2,353,638

C3.1.1 Allocation

268,638

Current Maintenance - Protection & Renewal



Classification	PRS Type	Name	Allocation (€)
Both NP/NS	LA Eng Support - B.1.2	Local Authority Support (Maintenance) 2023 LH	25,200
		Local Authority Support (Winter Maintenance) 2023 LH	10,000
National Primary	Ordinary Maintenance	NP Ordinary Maintenance 2023 LH	58,171
	Route Lighting	NP Route Lighting 2023 LH	15,000
	Winter Maintenance	NP Winter Maintenance 2023 LH	69,500
National Secondary	Ordinary Maintenance	NS Ordinary Maintenance 2023 LH	24,942
	Route Lighting	NS Motorway MMaRC Route Lighting 2023 LH	16,325
		NS Route Lighting 2023 LH	20,000
	Winter Maintenance	NS Winter Maintenance 2023 LH	29,500
C3.1.1 Current Maintenance - Protection & Renewal Total			268,638

Louth County Council	Total Allocation	A.4.1 Allocation
Greenways	2,353,638	700,000

PRS Type	Name	Allocation (€)
Greenway - Nat	Dundalk Bay to Carlingford Lough Greenway	700,000
A.4.1 Greenways Total		700,000

Mayo County Council

Capital Investment - Protection & Renewal & Active Travel (AT)

Total Allocation

65,300,929

C3.1.2 Allocation

22,154,462

Classification	PRS Type	Name	Route No:	Allocation (€)
Both NP/NS	Bridge Rehabilitation 1a - Nat	2020 NW Bridge Rehabilitation Mayo Contract 1	-	250,000
		2020 NW Bridge Rehabilitation Mayo Contract 2	-	1,500,000
	LA Eng Support - B.1.1a - Nat	Local Authority Support (Improvement) 2023 MO	-	478,198
		NRO Support (Improvement) 2023 MO	-	1,596,540
National Primary	HD15 and HD17 Minor Works 1a - Nat	N17MO Kilkelly (Rural Bus Stop)	17	60,000
		N17MO Kilkelly R322 Junction RSIS	17	5,000
		N17MO_068 N17 R320 Junction Claremorris	17	1,254,724
	Minor Works 1a - Nat	N26 - Foxford to Mount Falcon	26	200,000
N26 Ballina Bypass Phase 1		26	500,000	
N26 Cloongullane Bridge		26	400,000	
National Secondary	Pavement 1a - Nat	N05 Knockatemple	5	800,000
	AT: Minor Works 1a - Nat	AT - N60 Castlebar to Breaffy	60	700,000
		AT - N60 Heathlawn to Balla	60	100,000
	HD15 and HD17 Minor Works 1a - Nat	N59MO Carrowbaun RSIS	59	120,000
		N59MO Newport RSIS	59	10,000
		N59MO RSI Implementation	59	100,000
		N60MO_Bekan (Railway Bridge)	60	5,000
	Minor Works 1a - Nat	N84MO Ballinrobe Traffic Signals	84	200,000
		N59 Newfield to Derrada	59	50,000
		N59 Newport to Derrada Realignment	59	2,000,000
		N60 Heathlawn	60	6,000,000
		N60 Lagnamuck	60	5,000
		N60 Manulla Cross	60	300,000
	Pavement 1a - Nat	N84 Kilmaine - Shrule Road Realignment at Gorteens	84	20,000
		N59 Ballina Town	59	500,000
		N59 Bunree	59	500,000
		N59 Carrowkeneddy	59	300,000
		N59 Erriff	59	300,000
		N59 Lecarrow	59	500,000
		N59 Srahanarry	59	800,000
		N59 Srahnamonragh	59	1,000,000
		N60 Claremorris Town	60	500,000
		N83 Tavraun	83	500,000
	N84 Kilmaine Village	84	600,000	

C3.1.2 Capital Investment - Protection & Renewal & Active Travel (AT) Total

22,154,462

Mayo County Council

Construction of New Roads

Total Allocation

65,300,929

C3.3 Allocation

39,550,000

Classification	PRS Type	Name	Route No:	Allocation (€)
National Primary	Major Scheme 1b - Nat	Westport to Turlough	5	39,000,000
National Secondary	Major Scheme 1b - Nat	N58 Foxford Bypass	58	250,000
		Westport to Mulranny	59	300,000
C3.3 Construction of New Roads Total				39,550,000

Mayo County Council		Total Allocation	C3.1.1 Allocation
Current Maintenance - Protection & Renewal		65,300,929	1,276,467
Classification	PRS Type	Name	Allocation (€)
Both NP/NS	LA Eng Support - B.1.2	Local Authority Support (Maintenance) 2023 MO	76,600
		Local Authority Support (Winter Maintenance) 2023 MO	10,000
National Primary	Ordinary Maintenance	NP Ordinary Maintenance 2023 MO	257,408
	Route Lighting	NP Route Lighting 2023 MO	77,768
	Winter Maintenance	NP Winter Maintenance 2023 MO	199,600
National Secondary	Ordinary Maintenance	NS Ordinary Maintenance 2023 MO	327,960
	Route Lighting	NS Route Lighting 2023 MO	97,631
	Winter Maintenance	NS Winter Maintenance 2023 MO	229,500
C3.1.1 Current Maintenance - Protection & Renewal Total			1,276,467

Mayo County Council

Greenways

Total Allocation

65,300,929

A.4.1 Allocation

2,320,000

PRS Type	Name	Allocation (€)
Greenway - Nat	BCWIG - Viaduct Westport - Moy Cycle Br Ballina	200,000
	Clew Bay - Achill Sound & Ext. to Bannacurry	1,500,000
	Clew Bay Belclare to Murrisk	300,000
	Great Western Greenway - Newport Village	50,000
LA Eng Support - E7 - Nat	NRO Regional Greenways Support -2023 MO	270,000
A.4.1 Greenways Total		2,320,000

Meath County Council



Capital Investment - Protection & Renewal & Active Travel (AT)

Total Allocation

9,139,967

C3.1.2 Allocation

6,146,000

Classification	PRS Type	Name	Route No:	Allocation (€)
Both NP/NS	HD15 and HD17 Minor Works 1a - Nat	Rural Bus (Park and Ride) TBC	-	1,000,000
	LA Eng Support - B.1.1a - Nat	AT - Local Authority Support 2023 MH	-	50,000
		Local Authority Support (Improvement) 2023 MH	-	450,000
National Primary	AT: Minor Works 1a - Nat	AT - M3 Links Retrofit	3	200,000
	HD15 and HD17 Minor Works 1a - Nat	N2 Pump Cross (N2 Pavement Scheme) RSIS	2	235,000
National Secondary	HD15 and HD17 Minor Works 1a - Nat	N52MH_034.0 Balrath Cross RSIS	52	476,000
	Minor Works 1a - Nat	N51 Dunmoe Phase 2 (2017 Continuation)	51	2,500,000
		N52 Grange to Clontail (previously N52 Stephenstown to Fringestown Realignment Scheme)	52	500,000
	Pavement 1a - Nat	N51 Slane to County Boundary	51	735,000
C3.1.2 Capital Investment - Protection & Renewal & Active Travel (AT) Total				6,146,000

Meath County Council		Total Allocation		C3.3 Allocation
Construction of New Roads		9,139,967		1,100,000
Classification	PRS Type	Name	Route No:	Allocation (€)
National Primary	Major Scheme 1b - Nat	N2 Slane Bypass and Public Realm Enhancement Scheme	2	350,000
		NDP - N2 Rath Roundabout to Kilmoon Cross	2	750,000
C3.3 Construction of New Roads Total				1,100,000

Meath County Council		Total Allocation	C3.1.1 Allocation
Current Maintenance - Protection & Renewal		9,139,967	529,967
Classification	PRS Type	Name	Allocation (€)
Both NP/NS	LA Eng Support - B.1.2	Local Authority Support (Maintenance) 2023 MH	36,400
		Local Authority Support (Winter Maintenance) 2023 MH	10,000
National Primary	Ordinary Maintenance	NP Ordinary Maintenance 2023 MH	90,972
	Route Lighting	NP Route Lighting 2023 MH	82,013
	Winter Maintenance	NP Winter Maintenance 2023 MH	79,500
National Secondary	Ordinary Maintenance	NS Ordinary Maintenance 2023 MH	99,958
	Route Lighting	NS Route Lighting 2023 MH	51,624
	Winter Maintenance	NS Winter Maintenance 2023 MH	79,500
C3.1.1 Current Maintenance - Protection & Renewal Total			529,967

Meath County Council	Total Allocation	A.4.1 Allocation
Greenways	9,139,967	1,364,000

PRS Type	Name	Allocation (€)
Greenway - Nat	Boyne G/w & Navigation Scheme - Oldbridge Est. Entrance, Navan	100,000
	Boyne Valley to Lakelands	1,000,000
	Boyne Valley to Lakelands: Wilkinstown to Castletown	50,000
	Royal Canal - Meath - Ancilliary Works	14,000
LA Eng Support - E7 - Nat	Local Authority Greenways Support -2023 MH	200,000
A.4.1 Greenways Total		1,364,000

Monaghan County Council

Total Allocation

14,253,463

C3.1.2 Allocation

8,495,000

Capital Investment - Protection & Renewal & Active Travel (AT)

Classification	PRS Type	Name	Route No:	Allocation (€)
Both NP/NS	HD15 and HD17 Minor Works 1a - Nat	Fencing Retrofit 2023 MN	-	50,000
National Primary	LA Eng Support - B.1.1a - Nat	Local Authority Support (Improvement) 2023 MN	-	320,000
	AT: Minor Works 1a - Nat	AT - N2 Cyclepath - Corlat RoB to Collegiate College	2	260,000
		AT - N2 Cyclepath -Ballyalbany Jct to Coolshannagh RoB	2	150,000
		AT - N2 Cyclepath -Upgrade of Hard verge to Cyclepath N2 Ballyalbany to Tydavnet	2	250,000
		AT - N2 Cyclepath - Phase 3 to Emyvale Village	2	100,000
		HD15 and HD17 Minor Works 1a - Nat	N02MN_125.0 Emyvale RSIS	2
	Minor Works 1a - Nat	N2 Monaghan to Emyvale Improvement Phase 3	2	25,000
	Pavement 1a - Nat	N2 Lislansley to Clontibret	2	4,000,000
		N2 Moy to Mullabryan	2	2,240,000
NP Pavement Scheme Site Investigations 2023 MN		-	10,000	
National Secondary	Bridge Rehabilitation 1a - Nat	Ballynacarry New Bridge	53	500,000
	HD15 and HD17 Minor Works 1a - Nat	N54MN RSI Implementation 2023	54	20,000
	Minor Works 1a - Nat	N54 Tullybryan (Minor Works Project)	54	500,000
	Pavement 1a - Nat	NS Pavement Scheme Site Investigations 2023 MN	-	10,000

C3.1.2 Capital Investment - Protection & Renewal & Active Travel (AT) Total

8,495,000

Monaghan County Council

Construction of New Roads

Total Allocation

14,253,463

C3.3 Allocation

3,100,000

Classification	PRS Type	Name	Route No:	Allocation (€)
National Primary	Major Scheme 1b - Nat	NDP - N2 Ardee to South of Castleblaney Bypass	2	600,000
		NDP - N2 Clontibret to the NI Border	2	2,500,000
C3.3 Construction of New Roads Total				3,100,000

Monaghan County Council

Current Maintenance - Protection & Renewal

Total Allocation

14,253,463

C3.1.1 Allocation

508,463

Classification	PRS Type	Name	Allocation (€)
Both NP/NS	LA Eng Support - B.1.2	Local Authority Support (Maintenance) 2023 MN	25,200
		Local Authority Support (Winter Maintenance) 2023 MN	10,000
National Primary	Ordinary Maintenance	NP Ordinary Maintenance 2023 MN	149,648
	Route Lighting	NP Route Lighting 2023 MN	40,000
	Winter Maintenance	NP Winter Maintenance 2023 MN	169,500
National Secondary	Ordinary Maintenance	NS Ordinary Maintenance 2023 MN	44,615
	Route Lighting	NS Route Lighting 2023 MN	30,000
	Winter Maintenance	NS Winter Maintenance 2023 MN	39,500
C3.1.1 Current Maintenance - Protection & Renewal Total			508,463

Monaghan County Council

Greenways

Total Allocation

14,253,463

A.4.1 Allocation

2,150,000

PRS Type	Name	Allocation (€)
Greenway - Nat	Ulster Canal - Smithboro - Clones	1,000,000
	Ulster Canal Greenway- Smithborough to Monaghan	1,000,000
LA Eng Support - E7 - Nat	Local Authority Greenways Support -2023 MN	150,000
A.4.1 Greenways Total		2,150,000

Offaly County Council



Capital Investment - Protection & Renewal & Active Travel (AT)

Total Allocation

8,761,012

C3.1.2 Allocation

4,475,000

Classification	PRS Type	Name	Route No:	Allocation (€)
Both NP/NS	LA Eng Support - B.1.1a - Nat	Local Authority Support (Improvement) 2023 OY	-	275,000
National Secondary	Minor Works 1a - Nat	N62 Crancreagh (Cloghan to Derrinlough)	62	200,000
	Pavement 1a - Nat	N62 Boolinarig Little to Derrinlough	62	3,000,000
		N62 Cloghan to Stonestown	62	1,000,000
C3.1.2 Capital Investment - Protection & Renewal & Active Travel (AT) Total				4,475,000

Offaly County Council

Current Maintenance - Protection & Renewal

Total Allocation

8,761,012

C3.1.1 Allocation

406,012

Classification	PRS Type	Name	Allocation (€)
Both NP/NS	LA Eng Support - B.1.2	Local Authority Support (Maintenance) 2023 OY	11,800
		Local Authority Support (Winter Maintenance) 2023 OY	10,000
National Primary	Route Lighting	NP Motorway MMarC Lighting 2023 OY	9,117
National Secondary	Ordinary Maintenance	NS Ordinary Maintenance 2023 OY	129,194
	Route Lighting	NS Route Lighting 2023 OY	75,901
	Winter Maintenance	NS Winter Maintenance 2023 OY	170,000
C3.1.1 Current Maintenance - Protection & Renewal Total			406,012

Offaly County Council	Total Allocation	A.4.1 Allocation
Greenways	8,761,012	3,880,000

PRS Type	Name	Allocation (€)
Greenway - Nat	Grand Canal - Daingean to Edenderry	1,000,000
	Grand Canal - Daingean to Tullamore & Henesy's Br. to Turraun	200,000
	Grand Canal - Kilbeggan Link	150,000
	Grand Canal - Killina to Killina School	30,000
	Grand Canal - Leabeg to Boora	500,000
	Turraun to Shannon Harbour	2,000,000
A.4.1 Greenways Total		3,880,000

Roscommon County Council

Total Allocation
21,832,142

C3.1.2 Allocation
7,488,105

Capital Investment - Protection & Renewal & Active Travel (AT)

Classification ▲	PRS Type	Name	Route No:	Allocation (€)	
Both NP/NS	LA Eng Support - B.1.1a - Nat	Local Authority Support (Improvement) 2023 RN	-	222,095	
		NRO Support (Improvement) 2023 RN	-	1,961,010	
National Primary	AT: Minor Works 1a - Nat	AT - N5 Bellanagare	5	65,000	
		AT - N5 Frenckpark	5	80,000	
		AT - N5 Strokestown	5	65,000	
		AT - N5 Tulsk	5	100,000	
		AT - N5 Tulsk to Rathcroghan	5	230,000	
		HD15 and HD17 Minor Works 1a - Nat	N04RN Frenchpark RSIS 2022	4	200,000
			N5 RSI Implementmentation	5	20,000
National Secondary	Pavement 1a - Nat	N5 Frenchpark to Bellanagare	5	1,600,000	
	HD15 and HD17 Minor Works 1a - Nat	N61 Boyle RSIS	61	10,000	
		N61RN Castlerea RSIS	61	50,000	
		N61RN_Barrybeg RSIS	61	15,000	
		N63 RSI Implementation	63	100,000	
	Minor Works 1a - Nat	N60 Oran	60	50,000	
		N61 Clashaganny to Tulsk (Minor 2016)	61	100,000	
		N61 Coolteige	61	100,000	
		N61 Gortnacraannagh to Tulsk	61	500,000	
	Pavement 1a - Nat	N63 Athleague to Clonyourish	63	750,000	
		N63 Clonyourish to Ballinagard Road	63	1,270,000	
	C3.1.2 Capital Investment - Protection & Renewal & Active Travel (AT) Total				7,488,105

Roscommon County Council		Total Allocation		C3.3 Allocation
Construction of New Roads		21,832,142		12,000,000
Classification	PRS Type	Name	Route No:	Allocation (€)
National Primary	Major Scheme 1b - Nat	N5 Ballaghaderreen Bypass to Longford	5	12,000,000
C3.3 Construction of New Roads Total				12,000,000

Roscommon County Council

Current Maintenance - Protection & Renewal

Total Allocation

21,832,142

C3.1.1 Allocation

764,037

Classification	PRS Type	Name	Allocation (€)
Both NP/NS	LA Eng Support - B.1.2	Local Authority Support (Maintenance) 2023 RN	47,300
		Local Authority Support (Winter Maintenance) 2023 RN	10,000
National Primary	Ordinary Maintenance	NP Ordinary Maintenance 2023 RN	155,705
		NP Motorway MMaRC Lighting 2023 RN	16,596
	Route Lighting	NP Route Lighting 2023 RN	36,549
		NP Winter Maintenance 2023 RN	129,500
National Secondary	Ordinary Maintenance	NS Ordinary Maintenance 2023 RN	183,838
	Route Lighting	NS Route Lighting 2023 RN	45,049
	Winter Maintenance	NS Winter Maintenance 2023 RN	139,500
C3.1.1 Current Maintenance - Protection & Renewal Total			764,037

Roscommon County Council	Total Allocation	A.4.1 Allocation
Greenways	21,832,142	1,580,000

PRS Type	Name	Allocation (€)
Greenway - Nat	Lough Key to Carrick-on-Shannon	300,000
	Lough Ree - Athlone to Ballyleague/Lanesborough	600,000
	Lough Ree G/w - Ballyleague/Lanesborough to Tarmonbarry/Strokestown/Roosky	400,000
LA Eng Support - E7 - Nat	NCN - Athlone to Galway Cycleway - NRO Support RN	100,000
	NRO Regional Greenways Support -2023 RN	180,000
A.4.1 Greenways Total		1,580,000

Sligo County Council

Capital Investment - Protection & Renewal & Active Travel (AT)

Total Allocation

19,638,685

C3.1.2 Allocation

15,778,000

Classification	PRS Type	Name	Route No:	Allocation (€)
Both NP/NS	LA Eng Support - B.1.1a - Nat	Local Authority Support (Improvement) 2023 SO	-	213,000
National Primary	AT: Minor Works 1a - Nat	AT - N4 Collooney to Castlebaldwin	4	350,000
		AT - N4 Toberbride to Collooney	4	200,000
	HD15 and HD17 Minor Works 1a - Nat	N15_SO RSI Implementation 2023	15	5,000
		N17_SO RSI Implementation 2023	17	5,000
	LA Eng Support - B.1.1a - Nat	N4 and Project Office Support (Improvement) 2023 SO	4	1,360,000
	Minor Works 1a - Nat	N16 Lugatober Realignment	16	10,000,000
		N16 Sligo to Drumkilsellagh	16	100,000
		N4/N15 Sligo Urban Improvement	4	250,000
		Pavement 1a - Nat	N15 Rathcormack South	15
	N16 Lugatober to Co. Bdy		16	210,000
	NP Pavement Scheme Site Investigations 2023 SO		-	30,000
National Secondary	HD15 and HD17 Minor Works 1a - Nat	N59_SO RSI Implemenation 2023	59	5,000
	Pavement 1a - Nat	N59 Owenbeg Phase 3	59	2,000,000
		N59 Tullylin to Fiddaun	59	450,000
C3.1.2 Capital Investment - Protection & Renewal & Active Travel (AT) Total				15,778,000

Sligo County Council		Total Allocation		C3.3 Allocation
Construction of New Roads		19,638,685		2,300,000
Classification	PRS Type	Name	Route No:	Allocation (€)
National Primary	Major Scheme 1b - Nat	Collooney to Castlebaldwin	4	1,900,000
		NDP - N17 Knock to Collooney	17	400,000
C3.3 Construction of New Roads Total				2,300,000

Sligo County Council

Current Maintenance - Protection & Renewal

Total Allocation

19,638,685

C3.1.1 Allocation

770,685

Classification	PRS Type	Name	Allocation (€)
Both NP/NS	LA Eng Support - B.1.2	Local Authority Support (Maintenance) 2023 SO	60,900
		Local Authority Support (Winter Maintenance) 2023 SO	10,000
National Primary	Ordinary Maintenance	NP Ordinary Maintenance 2023 SO	228,430
	Route Lighting	NP Route Lighting 2023 SO	165,238
	Winter Maintenance	NP Winter Maintenance 2023 SO	179,500
National Secondary	Ordinary Maintenance	NS Ordinary Maintenance 2023 SO	60,017
	Route Lighting	NS Route Lighting 2023 SO	17,100
	Winter Maintenance	NS Winter Maintenance 2023 SO	49,500
C3.1.1 Current Maintenance - Protection & Renewal Total			770,685

Sligo County Council	Total Allocation	A.4.1 Allocation
Greenways	19,638,685	790,000

PRS Type	Name	Allocation (€)
Greenway - Nat	Sligo G/w - Bellaghy - Charlestown - Collooney	400,000
LA Eng Support - E7 - Nat	NRO Regional Greenways Support -2023 SO	390,000
A.4.1 Greenways Total		790,000

South Dublin County Council



Total Allocation

1,500,320

C3.1.1 Allocation

550,320

Current Maintenance - Protection & Renewal



Classification	PRS Type	Name	Allocation (€)
Both NP/NS	LA Eng Support - B.1.2	Local Authority Support (Maintenance) 2023 SD	4,500
		Local Authority Support (Winter Maintenance) 2023 SD	10,000
National Primary	Route Lighting	NP Motorway MMarC Lighting 2023 SD	427,500
National Secondary	Ordinary Maintenance	NS Ordinary Maintenance 2023 SD	28,589
	Route Lighting	NS Route Lighting 2023 SD	40,231
	Winter Maintenance	NS Winter Maintenance 2023 SD	39,500
C3.1.1 Current Maintenance - Protection & Renewal Total			550,320

South Dublin County Council	Total Allocation	A.4.1 Allocation
Greenways	1,500,320	950,000

PRS Type	Name	Allocation (€)
Greenway - Nat	Grand Canal - 12th Lock to Hazelhatch Bridge	800,000
LA Eng Support - E7 - Nat	Local Authority Greenways Support -2023 SD	150,000
A.4.1 Greenways Total		950,000

Tipperary County Council

Total Allocation

9,877,084

C3.1.2 Allocation

6,616,000

Capital Investment - Protection & Renewal & Active Travel (AT)

Classification	PRS Type	Name	Route No:	Allocation (€)
Both NP/NS	Bridge Rehabilitation 1a - Nat	Tipperary Bridge Rehabilitation	-	250,000
	LA Eng Support - B.1.1a - Nat	Local Authority Support (Improvement) 2023 T	-	350,000
National Primary	HD15 and HD17 Minor Works 1a - Nat	N24 Knockagh East Realignment RSIS	24	5,000
		N24 Main St & Fr Matthew St Tipp Town HD15 Scheme	24	500,000
		N24T_077.7 Clonmel Town RSIS	24	5,000
		N24T_094 to 096 Carrick-on Suir Pavement and Safety RSIS	24	1,200,000
	Pavement 1a - Nat	N24 Knockagh Roundabout - Pavement Scheme	24	200,000
		N24 Main Street Tipperary Town Pavement Strengthening & N74 Fr. Matthew St. Tipperary Pavement Overlay	24	1,000,000
National Secondary	HD15 and HD17 Minor Works 1a - Nat	N62T_058.0 Roscrea Bypass new road RSIS	62	2,000
		N62T_091.2 Slievenamon Road Thurles RSI Implementation	62	2,000
		N62T_093.0 Turtulla Cross RSIS	62	2,000
		N76 Grangemoekler Village HD15 Scheme	76	900,000
	Minor Works 1a - Nat	N74 Ballyhusty Realignment	74	500,000
	Pavement 1a - Nat	N62 Slievenamon Road Thurles Pavement Strengthening Phase 2	62	250,000
		N65 Carrigahorig Village Pavement Scheme	65	200,000
		N74 Golden to Knockroe	74	800,000
		N75 Liberty Square to Anner Hotel	75	450,000

C3.1.2 Capital Investment - Protection & Renewal & Active Travel (AT) Total

6,616,000

Tipperary County Council

Construction of New Roads

Total Allocation

9,877,084

C3.3 Allocation

1,025,000

Classification	PRS Type	Name	Route No:	Allocation (€)
National Primary	Major Scheme 1b - Nat	Cashel/Mitchelstown	8	25,000
		NDP - N24 Cahir to Limerick Junction	24	1,000,000
C3.3 Construction of New Roads Total				1,025,000

Tipperary County Council

Current Maintenance - Protection & Renewal

Total Allocation

9,877,084

C3.1.1 Allocation

836,084

Classification	PRS Type	Name	Allocation (€)
Both NP/NS	LA Eng Support - B.1.2	Local Authority Support (Maintenance) 2023 T	78,300
		Local Authority Support(Winter Maintenance) 2023 T	10,000
National Primary	Ordinary Maintenance	NP Ordinary Maintenance 2023 T	130,955
		NP Motorway MMarC Lighting 2023 T	45,831
	Route Lighting	NP Route Lighting 2023 T	56,170
		NP Winter Maintenance 2023 T	129,500
National Secondary	Ordinary Maintenance	NS Ordinary Maintenance 2023 T	179,776
	Route Lighting	NS Route Lighting 2023 T	56,052
	Winter Maintenance	NS Winter Maintenance 2023 T	149,500
C3.1.1 Current Maintenance - Protection & Renewal Total			836,084

Tipperary County Council		Total Allocation	A.4.1 Allocation
Greenways		9,877,084	1,400,000
PRs Type			Allocation (€)
Greenway - Nat	Cashel to Cahir G/w - Cashel to Cahir Town		100,000
	East Limerick Greenway (Tipperary)		50,000
	Lough Derg G/w - Ballina to Dromineer		300,000
	Marlfield Blueway Clonmel - Convent Rd to Marlfield		300,000
	Suir Blueway - Gas House Br. - Suir Island, Clonmel		100,000
	Suir Blueway - Marlfield to Cahir - Marlfield Village to Swiss Cottages		150,000
	Suir Blueway - Waterford G/w Link - Carrick on Suir to Kilmeaden		150,000
LA Eng Support - E7 - Nat	Local Authority Greenways Support -2023 T		250,000
A.4.1 Greenways Total			1,400,000

Waterford City and County Council

Total Allocation

5,601,490

C3.1.2 Allocation

4,550,123

Capital Investment - Protection & Renewal & Active Travel (AT)

Classification	PRS Type	Name	Route No:	Allocation (€)
Both NP/NS	HD15 and HD17 Minor Works 1a - Nat	Fencing Retrofit 2022 W	-	5,000
	LA Eng Support - B.1.1a - Nat	Local Authority Support (Improvement) 2023 W	-	80,000
		NRO Support (Improvement) 2023 W	-	2,500,000
National Primary	HD15 and HD17 Minor Works 1a - Nat	N25W Carrolls Cross RSIS	25	83,123
		N25W RSI Implementation 2022	25	10,000
		N25WD_056 Kiely's Cross	25	100,000
		N25WD_082 Lemybrien - Traffic Calming	25	10,000
		N25WD_Newtown Cross (Fleming's Bar) RSIS	25	2,000
		Minor Works 1a - Nat	25	50,000
		Pavement 1a - Nat	25	10,000
	National Secondary	Pavement 1a - Nat	N72 Kilcloher to Carrigeen	72
N72 Lismore			72	100,000
C3.1.2 Capital Investment - Protection & Renewal & Active Travel (AT) Total				4,550,123

Waterford City and County Council

Current Maintenance - Protection & Renewal

Total Allocation

5,601,490

C3.1.1 Allocation

351,367

Classification	PRS Type	Name	Allocation (€)
Both NP/NS	LA Eng Support - B.1.2	Local Authority Support (Maintenance) 2023 W	39,800
		Local Authority Support (Winter Maintenance) 2023 W	10,000
National Primary	Ordinary Maintenance	NP Ordinary Maintenance 2023 W	120,104
	Route Lighting	NP Route Lighting 2023 W	32,793
	Winter Maintenance	NP Winter Maintenance 2023 W	64,500
National Secondary	Ordinary Maintenance	NS Ordinary Maintenance 2023 W	44,814
	Route Lighting	NS Route Lighting 2023 W	9,856
	Winter Maintenance	NS Winter Maintenance 2023 W	29,500
C3.1.1 Current Maintenance - Protection & Renewal Total			351,367

Waterford City and County Council	Total Allocation	A.4.1 Allocation
Greenways	5,601,490	700,000
PRS Type	Name	Allocation (€)
Greenway - Nat	Pathfinder - Youghal to Dungarvan	400,000
	Waterford Greenway (2018 reallocation)	100,000
LA Eng Support - E7 - Nat	NRO Regional Greenways Support -2023 W	200,000
A.4.1 Greenways Total		700,000

Westmeath County Council



Capital Investment - Protection & Renewal & Active Travel (AT)

Total Allocation
14,314,089

C3.1.2 Allocation
4,899,700

Classification	PRS Type	Name	Route No:	Allocation (€)
Both NP/NS	LA Eng Support - B.1.1a - Nat	Local Authority Support (Improvement) 2023 WH	-	213,000
		NRO Support (Improvement) 2023 WH	-	1,810,000
	Minor Works 1a - Nat	Athlone Transportation Study 2021 WH	-	10,000
National Primary	Pavement 1a - Nat	N4 Heathstown to Griffinstown	4	811,200
National Secondary	HD15 and HD17 Minor Works 1a - Nat	N52WH RSI Implemenation 2022	52	10,000
		N55WH RSI Implementation 2022	55	10,000
	Minor Works 1a - Nat	N52 Cavestown to Kilrush	52	100,000
		N52 Cloghan to Billistown	52	10,000
		N52 Cloghan to Billistown Phase 2	52	500,000
		N55 Athlone to Ballymahon (Previously "N55 Tang to the Pigeons" & "N55Glasson to Cornamaddy")	55	150,000
	Pavement 1a - Nat	N55 Glasson to Lissoy	55	1,000,000
		N62 Clonbonny to Garrycastle	62	275,500
C3.1.2 Capital Investment - Protection & Renewal & Active Travel (AT) Total				4,899,700

Westmeath County Council

Construction of New Roads

Total Allocation

14,314,089

C3.3 Allocation

200,000

Classification	PRS Type	Name	Route No:	Allocation (€)
National Primary	Major Scheme 1b - Nat	NDP - N4 Mullingar to Longford	4	200,000
C3.3 Construction of New Roads Total				200,000

Westmeath County Council

Total Allocation

C3.1.1 Allocation

14,314,089

594,389

Current Maintenance - Protection & Renewal

Classification	PRS Type	Name	Allocation (€)
Both NP/NS	LA Eng Support - B.1.2	Local Authority Support (Maintenance) 2023 WH	25,000
		Local Authority Support (Winter Maintenance) 2023 WH	10,000
National Primary	Ordinary Maintenance	NP Ordinary Maintenance 2023 WH	38,037
	Route Lighting	NP Motorway MMarC Lighting 2023 WH	111,695
		NP Route Lighting 2023 WH	11,222
	Winter Maintenance	NP Winter Maintenance 2023 WH	74,500
National Secondary	Ordinary Maintenance	NS Ordinary Maintenance 2023 WH	101,527
	Route Lighting	NS Route Lighting 2023 WH	27,908
	Winter Maintenance	NS Winter Maintenance 2023 WH	194,500
C3.1.1 Current Maintenance - Protection & Renewal Total			594,389

Westmeath County Council	Total Allocation	A.4.1 Allocation
Greenways	14,314,089	8,620,000

PRS Type	Name	Allocation (€)
Greenway - Nat	Kilbeggan to Mullingar Greenway	400,000
	NCN - Athlone Bridge Cycleway (Castle to the Marina) - WH	5,000,000
	NCN - Galway to Athlone Cycleway - WH	2,750,000
	NCN - Galway to Maynooth Cycleway	100,000
LA Eng Support - E7 - Nat	NRO Regional Greenways Support -2023 WH	370,000
A.4.1 Greenways Total		8,620,000

Wexford County Council



Capital Investment - Protection & Renewal & Active Travel (AT)

Total Allocation

9,434,252

C3.1.2 Allocation

4,380,958

Classification	PRS Type	Name	Route No:	Allocation (€)
Both NP/NS	HD15 and HD17 Minor Works 1a - Nat	Fencing Retrofit 2023 WX	-	20,000
	LA Eng Support - B.1.1a - Nat	Local Authority Support (Improvement) 2023 WX	-	100,000
	Pavement 1a - Nat	Pavement Scheme Site Investigations 2023 WX	-	50,000
National Primary	HD15 and HD17 Minor Works 1a - Nat	N25 Ballygillane Roundabout	25	500,958
	Minor Works 1a - Nat	Rosslare Europort Access Road	25	500,000
	Pavement 1a - Nat	N25 Ashfield Cross to Ballykillane Phase 2	25	1,600,000
		N25 New Ross Roundabout to Clonard Great Pavement	25	10,000
National Secondary	Pavement 1a - Nat	N80 Scarawalsh to Ballycarney Phase 2	80	1,600,000
C3.1.2 Capital Investment - Protection & Renewal & Active Travel (AT) Total				4,380,958

Wexford County Council		Total Allocation		C3.3 Allocation	
Construction of New Roads		9,434,252		1,150,000	
Classification	PRS Type	Name	Route No:	Allocation (€)	
National Primary	Major Scheme 1b - Nat	NDP - N11/N25 Oilgate to Rosslare	11	1,150,000	
C3.3 Construction of New Roads Total				1,150,000	

Wexford County Council

Total Allocation

9,434,252

C3.1.1 Allocation

553,294

Current Maintenance - Protection & Renewal

Classification	PRS Type	Name	Allocation (€)
Both NP/NS	LA Eng Support - B.1.2	Local Authority Support (Maintenance) 2023 WX	18,000
		Local Authority Support (Winter Maintenance) 2023 WX	10,000
National Primary	Ordinary Maintenance	NP Ordinary Maintenance 2023 WX	197,547
	Route Lighting	NP Route Lighting 2023 WX	124,577
	Winter Maintenance	NP Winter Maintenance 2023 WX	169,500
National Secondary	Ordinary Maintenance	NS Ordinary Maintenance 2023 WX	18,735
	Route Lighting	NS Route Lighting 2023 WX	4,935
	Winter Maintenance	NS Winter Maintenance 2023 WX	10,000
C3.1.1 Current Maintenance - Protection & Renewal Total			553,294

Wexford County Council

Greenways

Total Allocation

9,434,252

A.4.1 Allocation

3,350,000

PRS Type	Name	Allocation (€)
Greenway - Nat	New Ross to St. Mullins	50,000
	Rosslare to Waterford, Rosslare Europort to Belview	50,000
	South Eastern - Waterford to New Ross	3,000,000
	Wexford Town to Rosslare Greenway	50,000
LA Eng Support - E7 - Nat	Local Authority Greenways Support -2023 WX	200,000
A.4.1 Greenways Total		3,350,000

Wicklow County Council

Total Allocation

7,427,126

C3.1.2 Allocation

4,330,000

Capital Investment - Protection & Renewal & Active Travel (AT)

Classification	PRS Type	Name	Route No:	Allocation (€)
Both NP/NS	HD15 and HD17 Minor Works 1a - Nat	Fencing Retrofit 2023 WW	-	10,000
	LA Eng Support - B.1.1a - Nat	AT - Local Authority Support 2023 WW	-	50,000
		Local Authority Support (Improvement) 2023 WW	-	300,000
National Primary	AT: Minor Works 1a - Nat	AT - N11 Kilmacanogue to Southern Cross Road	11	750,000
	HD15 and HD17 Minor Works 1a - Nat	N11 Kilmacanogue Parallel Service Road	11	465,000
	Minor Works 1a - Nat	N11M11 Bus Priority Interim Scheme (previously B1.1b WW/21/25702)	11	2,000,000
National Secondary	HD15 and HD17 Minor Works 1a - Nat	N81_WW Blessington South RSIS	81	5,000
		N81_WW Hollywood Park & Ride RSIS	81	50,000
	Minor Works 1a - Nat	N81 Hangmans Bend Realignment Scheme	81	200,000
	Pavement 1a - Nat	N81 Tuckmill to Castleruddery Lower	81	500,000
C3.1.2 Capital Investment - Protection & Renewal & Active Travel (AT) Total				4,330,000

Wicklow County Council

Total Allocation

C3.1.1 Allocation

7,427,126

297,126

Current Maintenance - Protection & Renewal

Classification	PRS Type	Name	Allocation (€)
Both NP/NS	LA Eng Support - B.1.2	Local Authority Support (Maintenance) 2023 WW	22,800
		Local Authority Support (Winter Maintenance) 2023 WW	10,000
National Primary	Route Lighting	NP Motorway MMaRC Lighting 2023 WW	115,941
National Secondary	Ordinary Maintenance	NS Ordinary Maintenance 2023 WW	48,606
	Route Lighting	NS Route Lighting 2023 WW	10,279
	Winter Maintenance	NS Winter Maintenance 2023 WW	89,500
C3.1.1 Current Maintenance - Protection & Renewal Total			297,126

Wicklow County Council

Greenways

Total Allocation

7,427,126

A.4.1 Allocation

2,800,000

PRS Type	Name	Allocation (€)
Greenway - Nat	Arklow to Shillelagh	500,000
	Blessington E - Blessington Lake Loop	1,800,000
	Greystones to Wicklow	250,000
LA Eng Support - E7 - Nat	Local Authority Greenways Support -2023 WW	250,000
A.4.1 Greenways Total		2,800,000



Ionad Ghnó Gheata na Páirce,
Stráid Gheata na Páirce
Baile Átha Cliath 8, Éire



Parkgate Business Centre,
Parkgate Street,
Dublin 8, Ireland



www.tii.ie



info@tii.ie



+353 (01) 646 3600



+353 (01) 646 3601